

EX #85 w/Map  
Ref @ 9/20/24  
PH

## Locational Guide Map Classifications and Criteria

### Priority Funding Areas

Priority Funding Areas are delineated based on conditions that exist at the Census Block level, which is the smallest geographical unit delineated by the U.S. Census Bureau. Census Blocks are statistical areas which in Connecticut are typically bounded by visible features, such as streets, roads, streams, and railroad lines. Generally, Census Blocks in denser urban communities are small in area, such as a block in a city that is bounded on all sides by streets. However, Census Blocks in suburban and rural areas may be large, or irregular, and bounded by a variety of features, such as roads or streams. For example, a specific Census Block may be partially served by public water and/or sewer, and thus the entire block would appear to be served by these utilities. Municipalities may request that certain Census Blocks be removed from this classification during the cross-acceptance process. Any limitations in the use of Census Blocks in this LGM should not be construed as influencing local land use and zoning decisions or municipal plans of conservation and development, nor should it create any expectation for future utility service where none currently exists.

In accordance with [CGS Section 16a-35c\(b\)](#), OPM “shall develop recommendations for delineation of the boundaries of priority funding areas in the state and for revisions thereafter” and submit such recommendations to the Continuing Committee for review when the draft State C&D Plan is submitted to such committee in accordance with [CGS Section 16a-29](#).

The LGM continues to be based on the same criteria from the LGM adopted as part of the 2013-2018 State C&D Plan. In order to address shortcomings associated with the use of Census-defined Urban Area or Urban Cluster, Priority Funding Areas are now classified by Census Blocks that meet any *two* or more of the following criteria:

- Designation as an Urban Area or Urban Cluster in the 2010 Census
- Are within a ½ mile buffer surrounding existing or planned mass-transit stations (rail and busway)
- Contain existing or planned sewer service from an adopted Wastewater Facility Plan
- Contain existing or planned water service from an adopted Public Drinking Water Supply Plan
- Contain a local bus route that provides bus service not less than 7 days a week

An intended outcome of this delineation of Priority Funding Area boundaries is to require state agencies to consider the municipal plan of conservation and development, in accordance with CGS

Section [16a-35d](#), whenever they propose to site a growth-related project in areas with only one or none of the Priority Funding Area criteria.

### **Balanced Priority Funding Areas**

Balanced Priority Funding Areas meet the criteria of both Priority Funding Areas and Conservation Areas. State agencies that propose certain actions in these areas must provide balanced consideration of all factors in determining the extent to which it is consistent with the policies of the State C&D Plan. For example, a state-sponsored growth-related project (e.g., business expansion) proposed in a Balanced Priority Funding Area that is also characterized as a Drinking Water Supply Watershed would need to consider the integrity of the drinking water supply in determining the consistency of its proposed action. In such cases, the sponsoring state agency shall consult with the appropriate resource consultation agency or agencies (see below chart) to resolve any potential policy conflicts.

### **Village Priority Funding Areas**

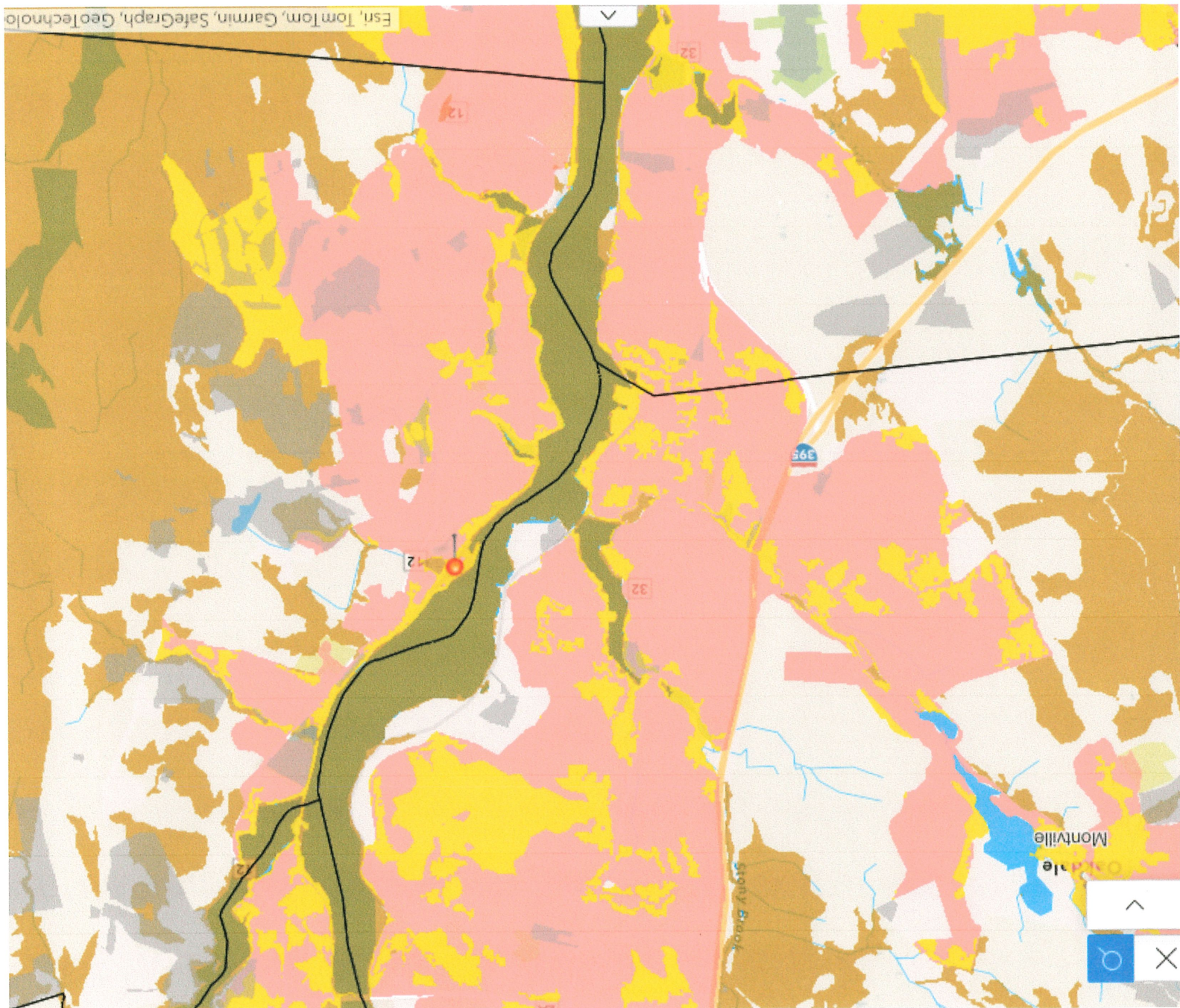
In the state's more rural municipalities, traditional village centers are considered to be Village Priority Funding Areas. This LGM classification is intended to recognize the unique characteristics and needs of these areas, in accordance with CGS Section [16a-35e](#). Village Priority Funding Areas were carried over from the 2013-2018 State C&D Plan, and have been updated based on municipal input.

### **Conservation Areas**

Conservation Areas are delineated based on the presence of factors that reflect environmental or natural resource values. In contrast to Priority Funding Areas, which are based on man-made Census Blocks, Conservation Areas are based on existing environmental conditions, such as soils or elevation, which oftentimes have no visible boundaries. Any growth-related project being considered by a state agency in Conservation Areas would require an exception in accordance with CGS Section [16a-35d](#), including a review of consistency with the affected municipality's plan of conservation and development.

Conservation Areas include any one or more of the following factors:





EX#85