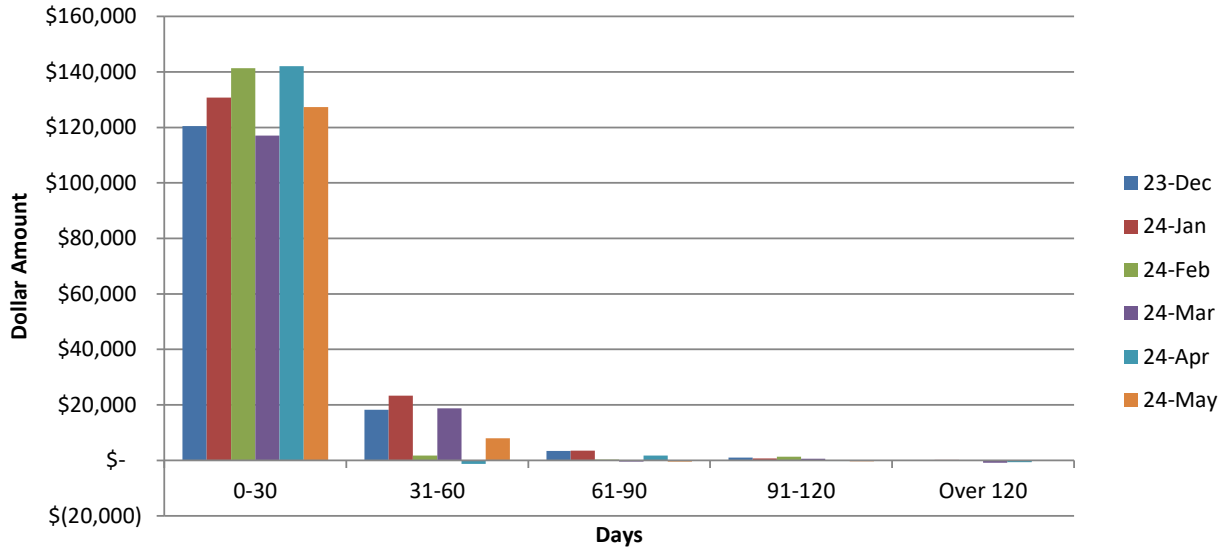


WPCA AGED A/R TRENDS DECEMBER 2023 - MAY 2024



DEC	DEC	DEC	DEC	DEC	
0-30	31-60	61-90	91-120	OVER 120	
\$ 120,496	\$ 18,201	\$ 3,446	\$ 963	\$ 95	\$ 143,200

JAN	JAN	JAN	JAN	JAN	
0-30	31-60	61-90	91-120	OVER 120	
\$ 130,771	\$ 23,335	\$ 3,531	\$ 741	\$ 163	\$ 158,541

FEB	FEB	FEB	FEB	FEB	
0-30	31-60	61-90	91-120	OVER 120	
\$ 141,301	\$ 1,771	\$ 251	\$ 1,311	\$ (53)	\$ 144,581

MAR	MAR	MAR	MAR	MAR	
0-30	31-60	61-90	91-120	OVER 120	
\$ 117,081	\$ 18,806	\$ (451)	\$ 575	\$ (853)	\$ 135,158

APRIL	APRIL	APRIL	APRIL	APRIL	
0-30	31-60	61-90	91-120	OVER 120	
\$ 142,080	\$ (1,318)	\$ 1,708	\$ (198)	\$ (698)	\$ 141,575

MAY	MAY	MAY	MAY	MAY	
0-30	31-60	61-90	91-120	OVER 120	
\$ 127,347	\$ 8,013	\$ (425)	\$ (359)	\$ 42	\$ 134,618

Foot Notes:

Cash Collected in the month of April 2024: \$146,115.97