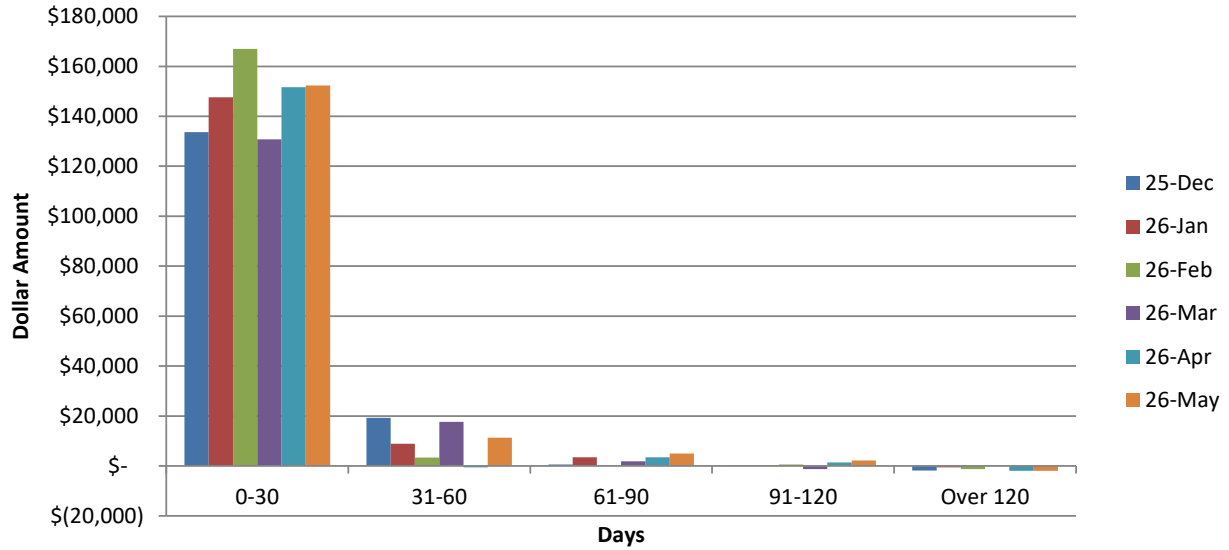


### WPCA AGED A/R TRENDS DECEMBER 2025 - MAY 2026



DEC	DEC	DEC	DEC	DEC	
0-30	31-60	61-90	91-120	OVER 120	
\$ 133,648	\$ 19,254	\$ 559	\$ 33	\$ (1,813)	\$ 151,681

JAN	JAN	JAN	JAN	JAN	
0-30	31-60	61-90	91-120	OVER 120	
\$ 147,589	\$ 8,846	\$ 3,423	\$ 164	\$ (607)	\$ 159,416

FEB	FEB	FEB	FEB	FEB	
0-30	31-60	61-90	91-120	OVER 120	
\$ 166,928	\$ 3,349	\$ 67	\$ 599	\$ (1,245)	\$ 169,698

MAR	MAR	MAR	MAR	MAR	
0-30	31-60	61-90	91-120	OVER 120	
\$ 130,831	\$ 17,668	\$ 1,797	\$ (1,261)	\$ 250	\$ 149,285

APR	APR	APR	APR	APR	
0-30	31-60	61-90	91-120	OVER 120	
\$ 151,656	\$ (535)	\$ 3,444	\$ 1,419	\$ (1,910)	\$ 154,074

MAY	MAY	MAY	MAY	MAY	
0-30	31-60	61-90	91-120	OVER 120	
\$ 152,326	\$ 11,349	\$ 4,956	\$ 2,207	\$ (1,997)	\$ 168,841

**Foot Notes:**

Cash Collected in the month of May 2026: \$149,523.28