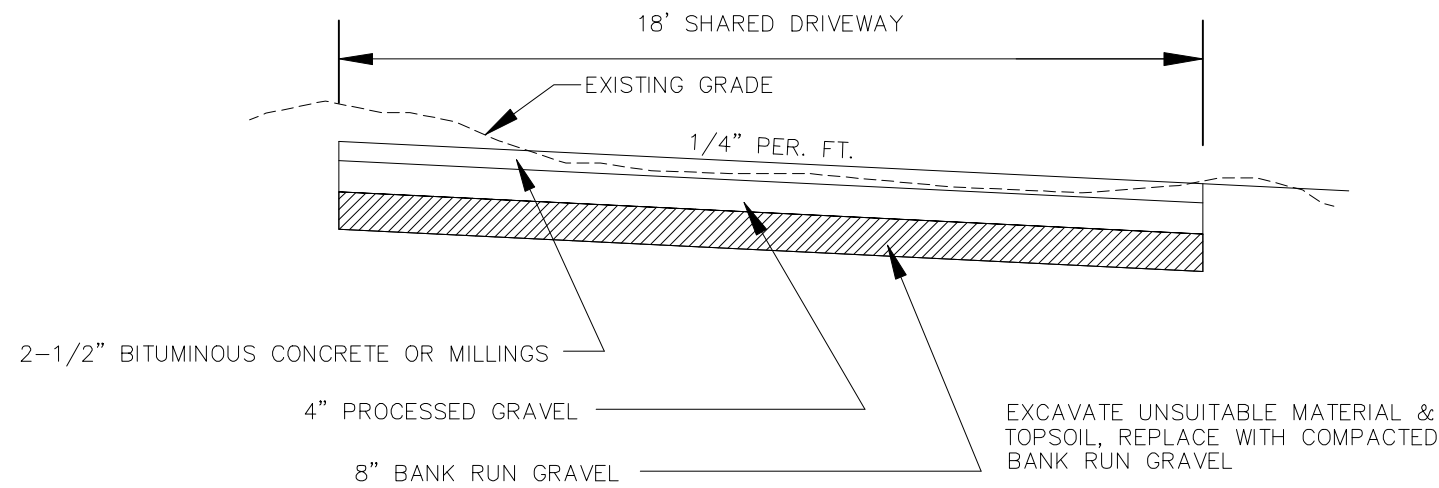


- ALL MATERIAL THICKNESS ARE FOR COMPACTED DEPTH
- IF BINDER COURSE IS LEFT AS A TOP COURSE FOR AN EXTENDED PERIOD, THE DIR. OF PUBLIC WORKS MAY REQUIRE THAT A TACK COAT OF BITUMINOUS MATERIAL MAY BE APPLIED BEFORE LAYING THE BITUMINOUS CONCRETE SURFACE COURSE.
- SUBBASE DEPTH SHALL BE INCREASED TO 18" WHERE LEDGE ROCK IS ENCOUNTERED.
- FOR CONSTRUCTION MATERIAL STANDARDS, REFER TO STATE OF CONNECTICUT, STANDARD SPECIFICATIONS FOR ROADS, BRIDGES AND INCIDENTAL CONSTRUCTION, FORM 813, AS AMENDED.

TYPICAL CROSS SECTION LOCAL STREET
(N.T.S.)



TYPICAL SHARED DRIVEWAY CROSS-SECTION
(N.T.S.)

APPROVED BY THE LEDYARD PLANNING AND ZONING COMMISSION AS TO THE COMPLIANCE WITH THE REGULATIONS GOVERNING THE SUBDIVISION OF LAND. ALL IMPROVEMENTS SHALL BE COMPLETED BY _____ DATE _____

CHAIRMAN OR SECRETARY _____ DATE _____

LOT NUMBERS ASSIGNED BY THE ASSESSOR _____

ASSESSOR _____ DATE _____

IWWC APPLICATION# _____

APPROVED, _____

NO PERMIT NECESSARY. (NOT WITHIN A REGULATED AREA)

NOT APPLICABLE AT THIS TIME. (WITHIN A REGULATED AREA; NO REGULATED ACTIVITY PROPOSED AT THIS TIME.)

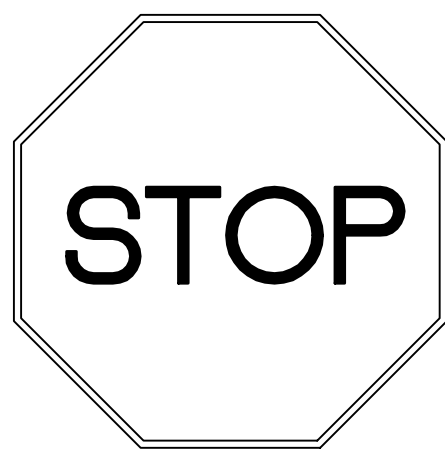
ZONING/WETLANDS OFFICER _____ DATE _____

APPROVED BY THE DIRECTOR OF PUBLIC WORKS OR THE TOWN ENGINEER FOR PUBLIC WAY LAYOUT. _____ DATE _____

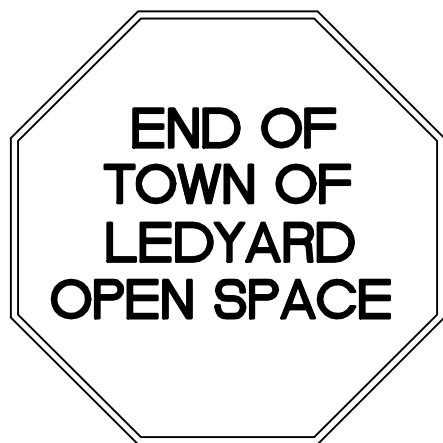
PUBLIC WORKS DIRECTOR/TOWN ENGINEER _____ DATE _____

EROSION AND SEDIMENT CONTROL PLAN CERTIFIED BY VOTE OF THE LEDYARD PLANNING AND ZONING COMMISSION _____

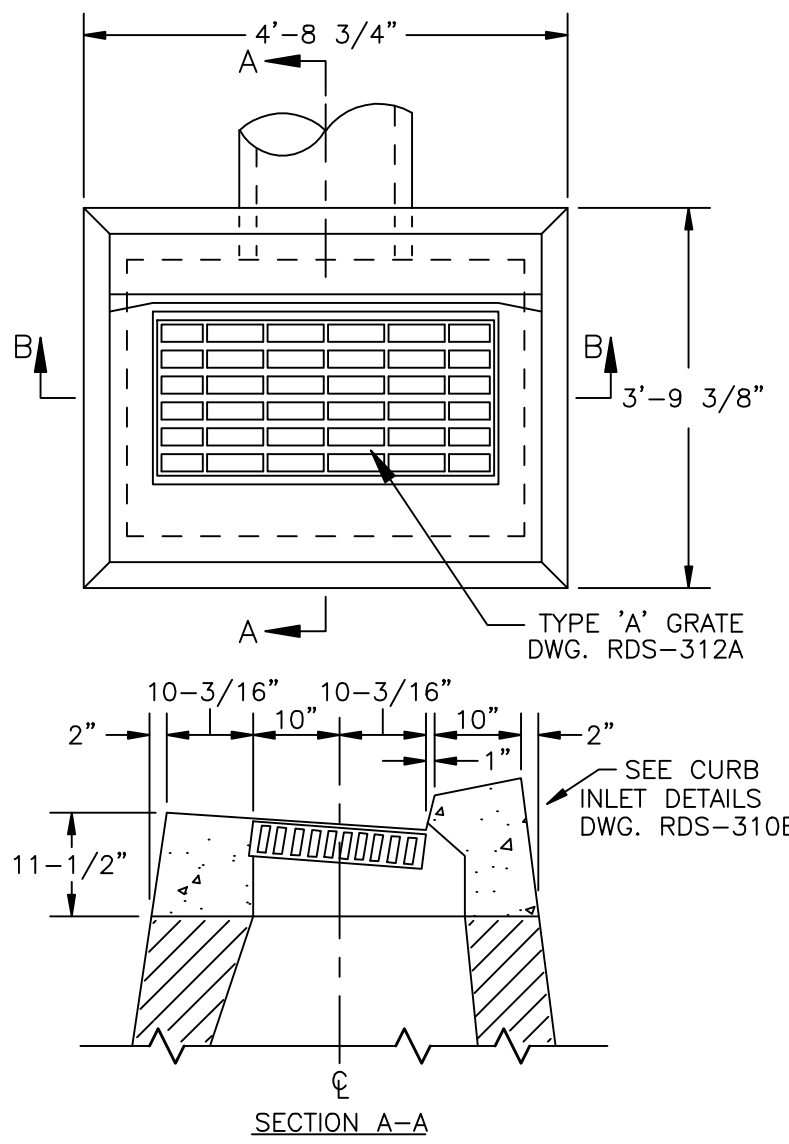
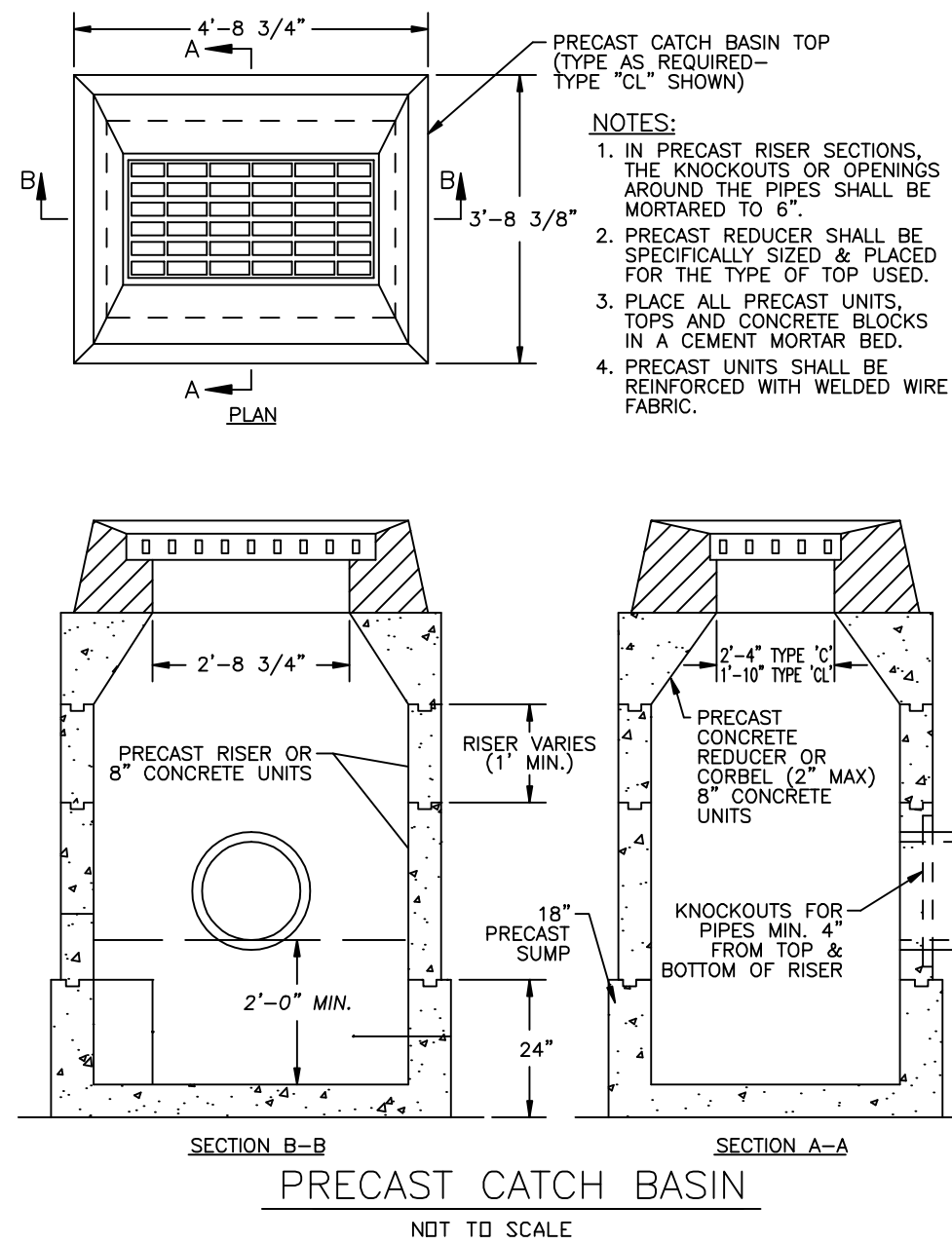
CHAIRMAN OR SECRETARY OF THE LEDYARD PLANNING AND ZONING COMMISSION _____ DATE _____



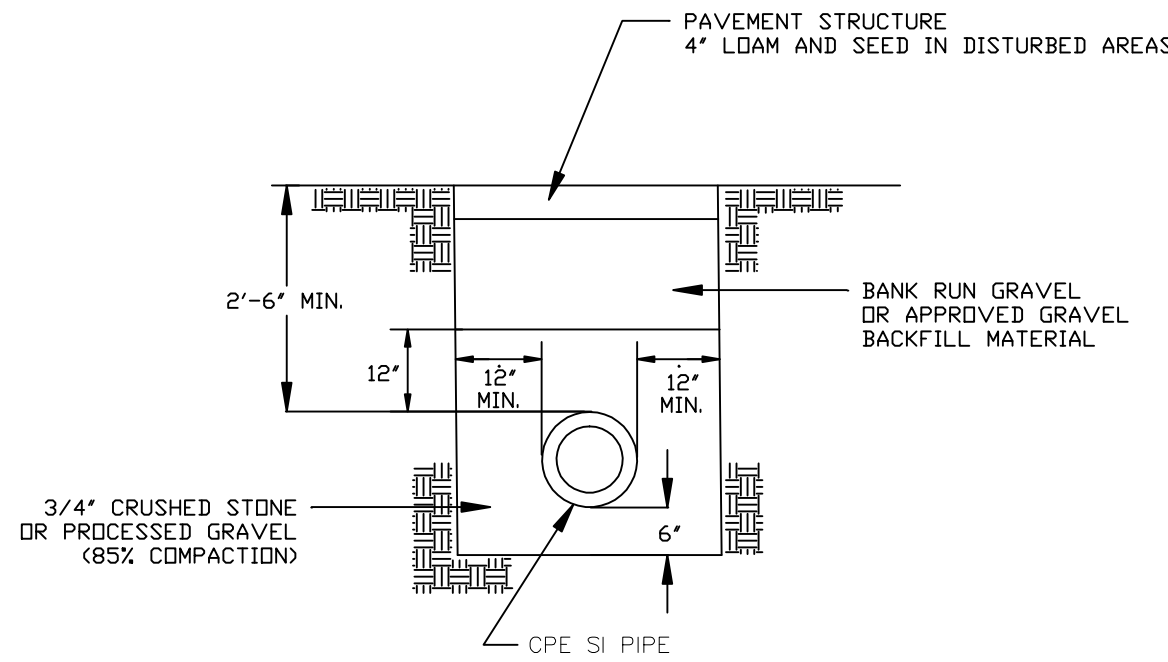
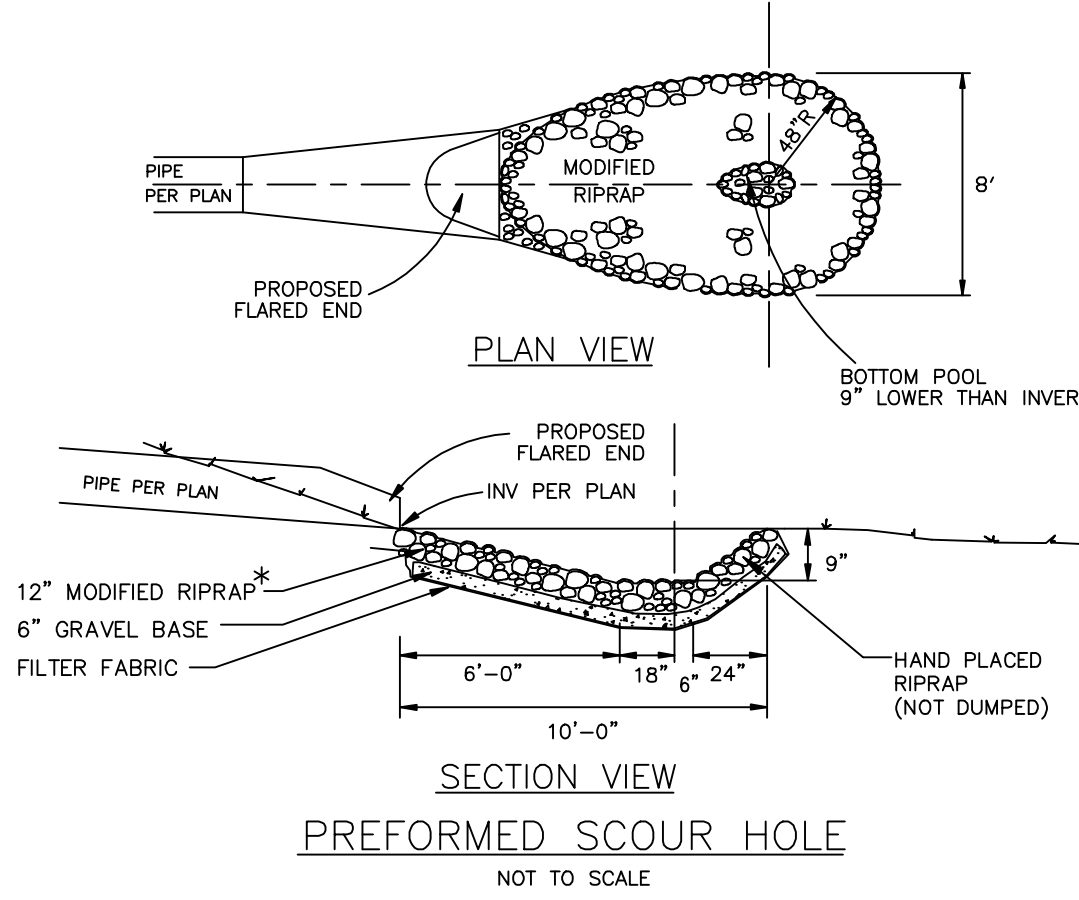
STOP SIGN
(N.T.S.)



LEDYARD END OPEN SPACE SIGN
(N.T.S.)

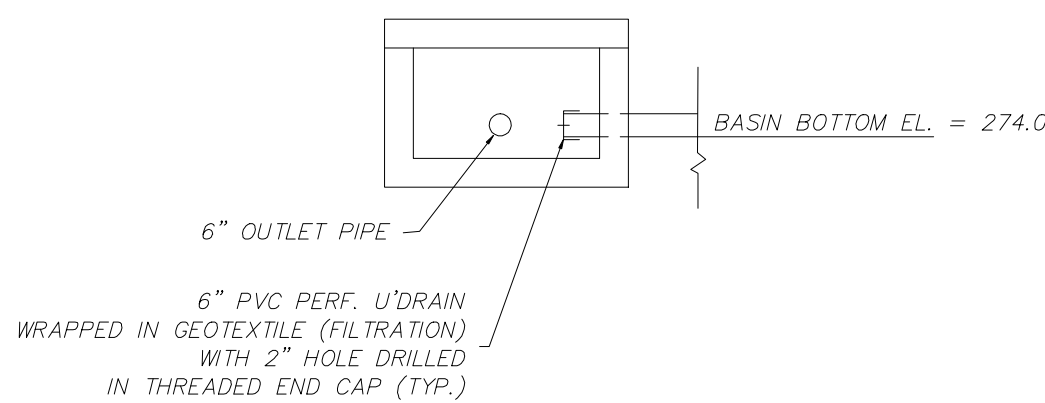


PRECAST CATCH BASIN
(N.T.S.)

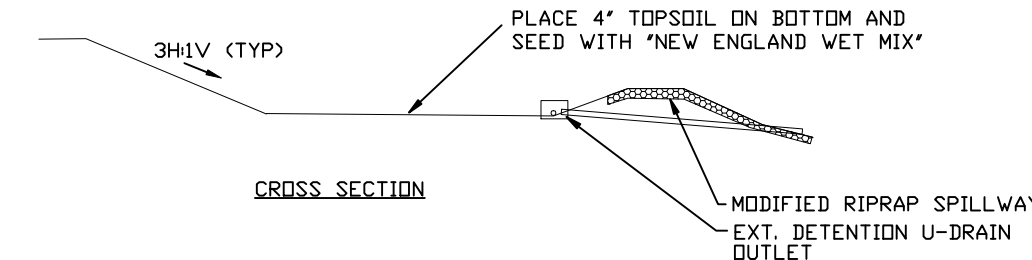


- NOTE:
- IF PIPE IS PLACED IN OR ON LEDGE, ALL LEDGE WITHIN 12" OF PIPE SHALL BE REMOVED AND REPLACED WITH PIPE BEDDING.

DRAINAGE PIPE TRENCH
(N.T.S.)

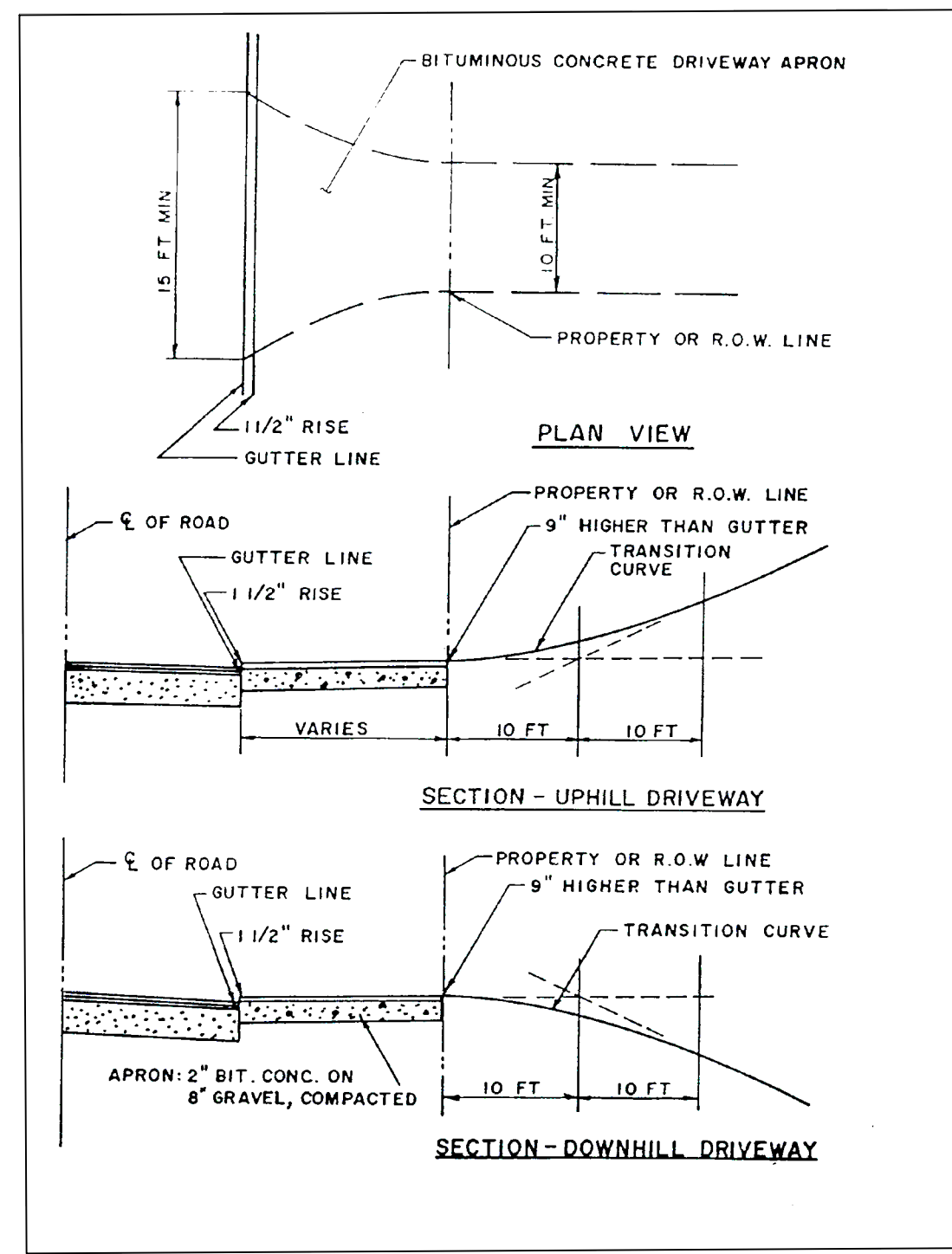


D-BOX OUTLET
EXTENDED DETENTION
UNDERDRAIN OUTLET
(N.T.S.)

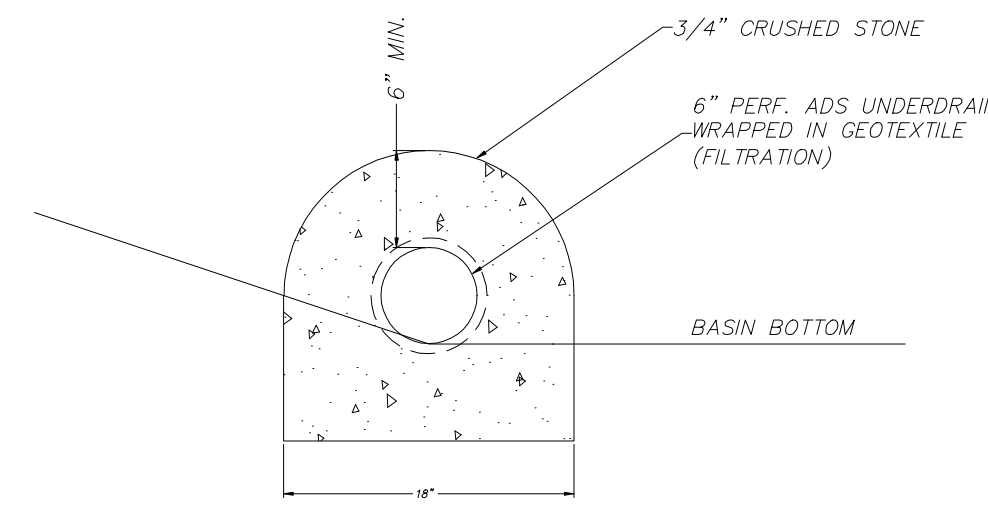


- NOTES:
- THE PURPOSE OF THE WATER QUALITY BASIN IS TO REMOVE SEDIMENT FROM THE WATER QUALITY VOLUME (WQV). THE BASIN IS SIZED TO HOLD THE WQV (3450 CUBIC FEET) WHICH WILL BE FILTERED THROUGH THE SURFACE DRAIN AND SLOWLY RELEASED INTO THE WETLANDS.
 - STORMS THAT EXCEED THE WATER QUALITY VOLUME WILL FLOW OUT THE SPILLWAY.

WATER QUALITY BASIN



DRIVEWAY APRON DETAIL
(N.T.S.)



EXTENDED DETENTION UNDERDRAIN
(N.T.S.)

PLAN SHOWING
CONSTRUCTION DETAILS
EAGLES LANDING
AN OPEN SPACE SUBDIVISION
PROPERTY OF
MR G 1 LLC
79 VINEGAR HILL ROAD
LEDYARD, CONNECTICUT
JUNE 2022