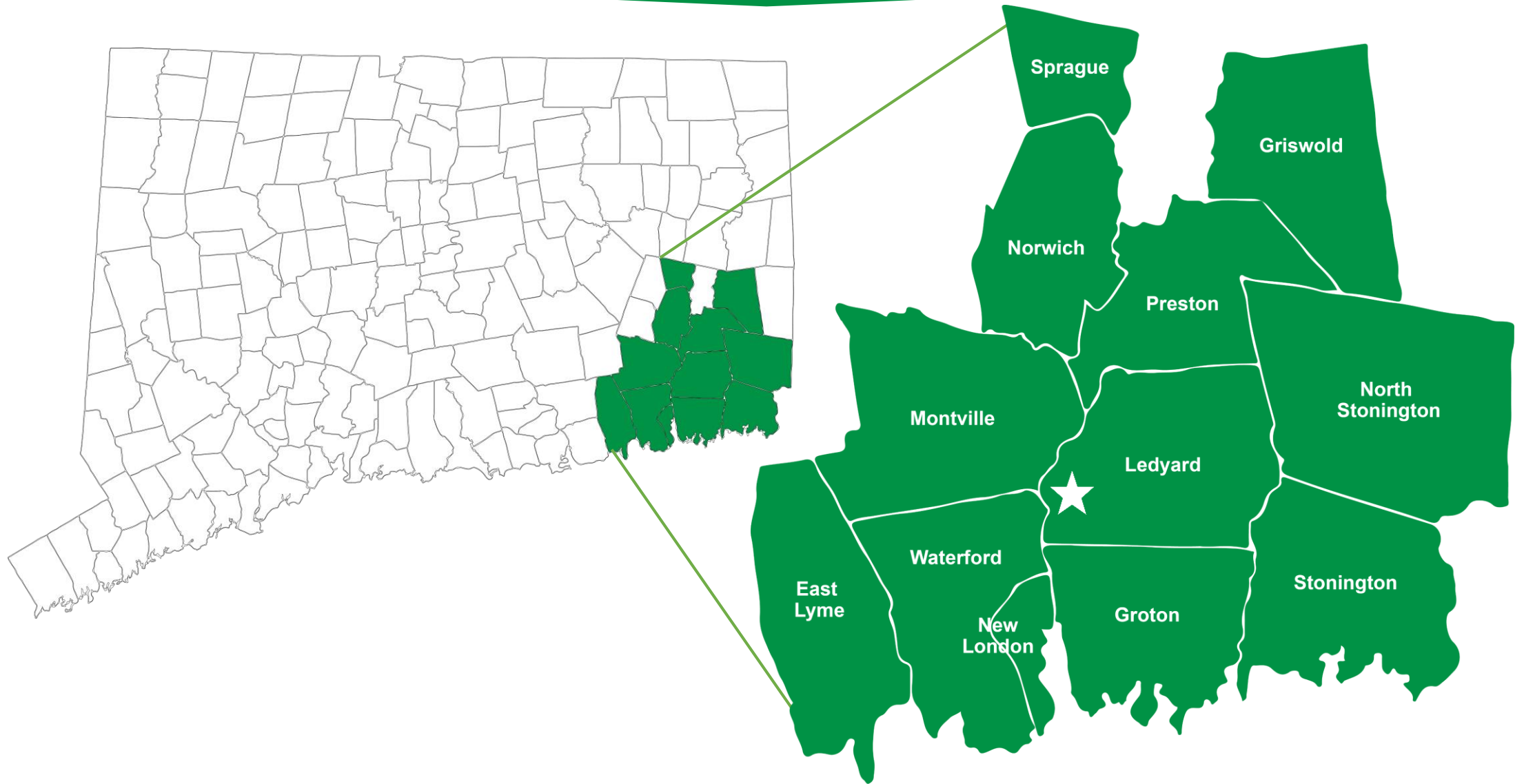
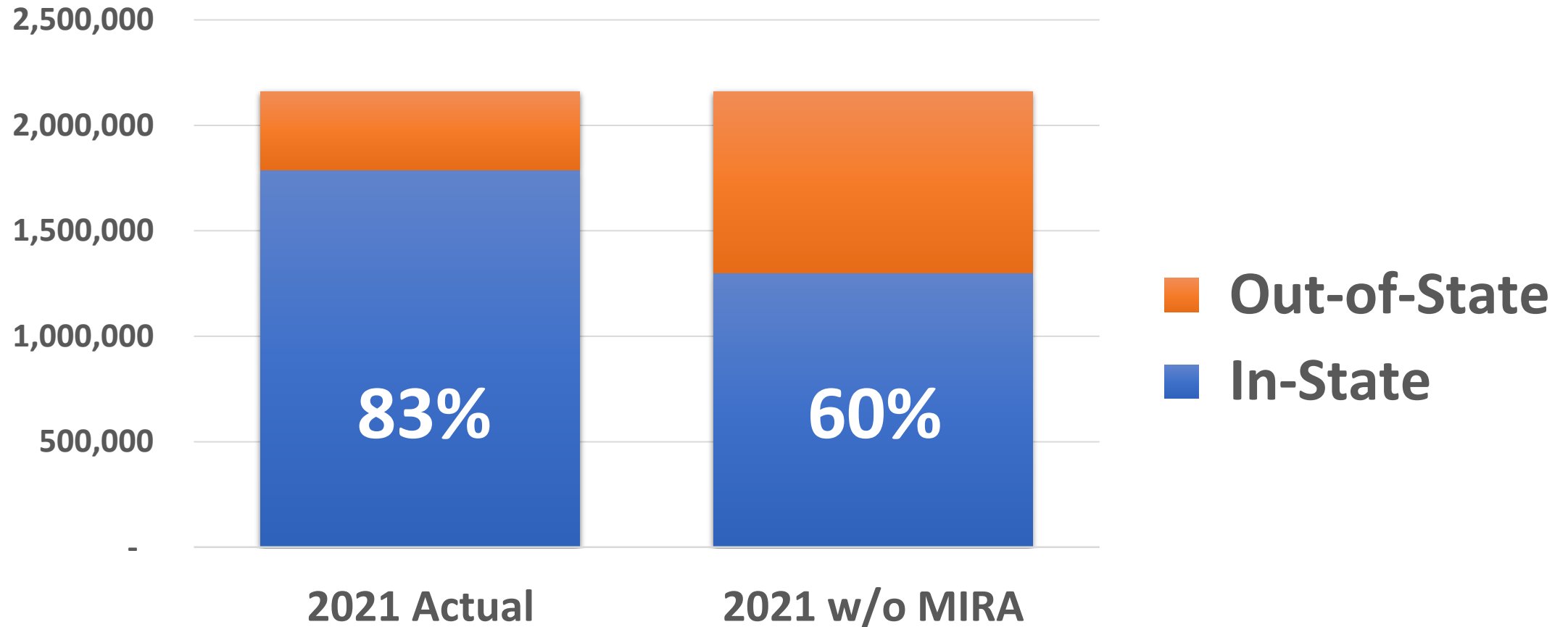




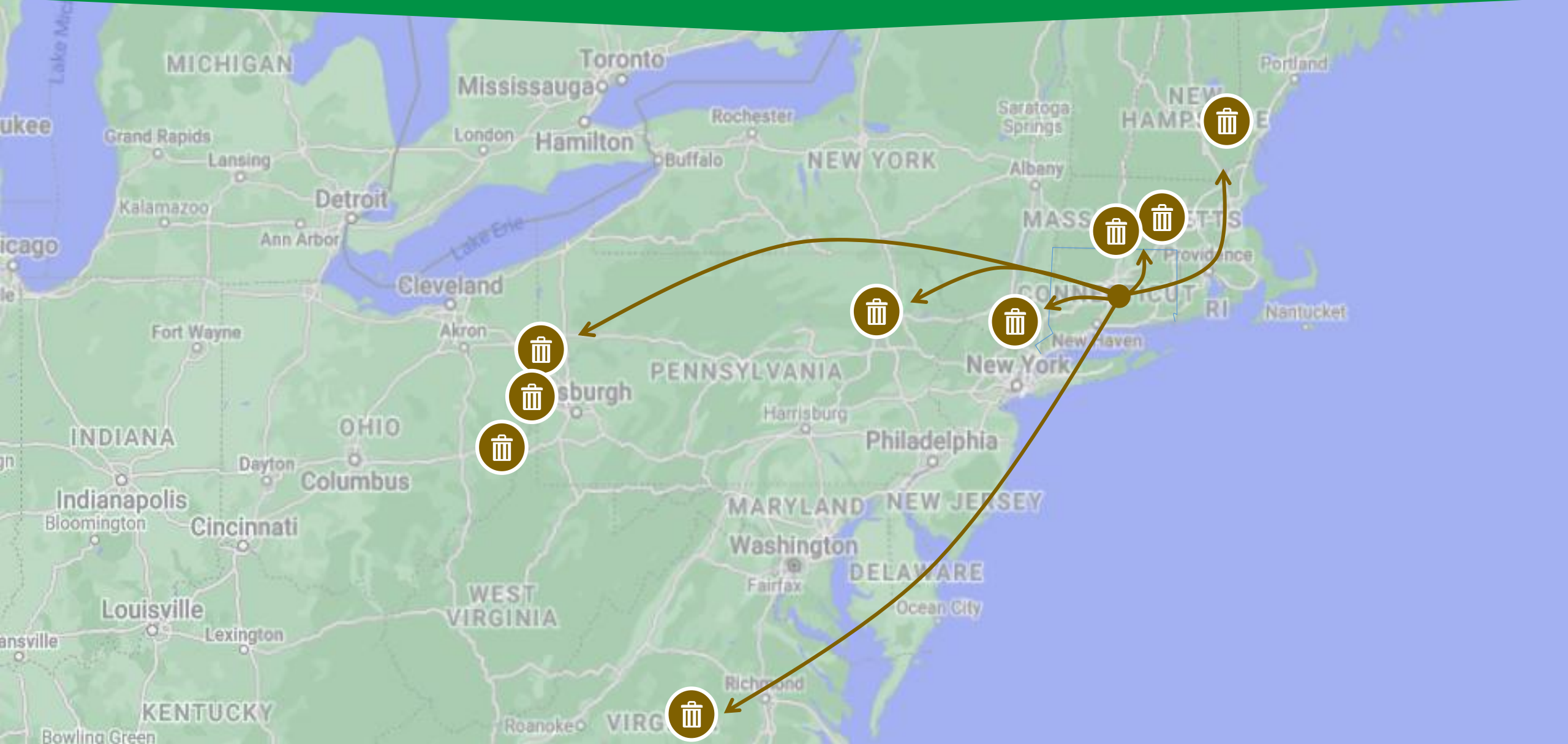
SCRRRA Member Municipalities



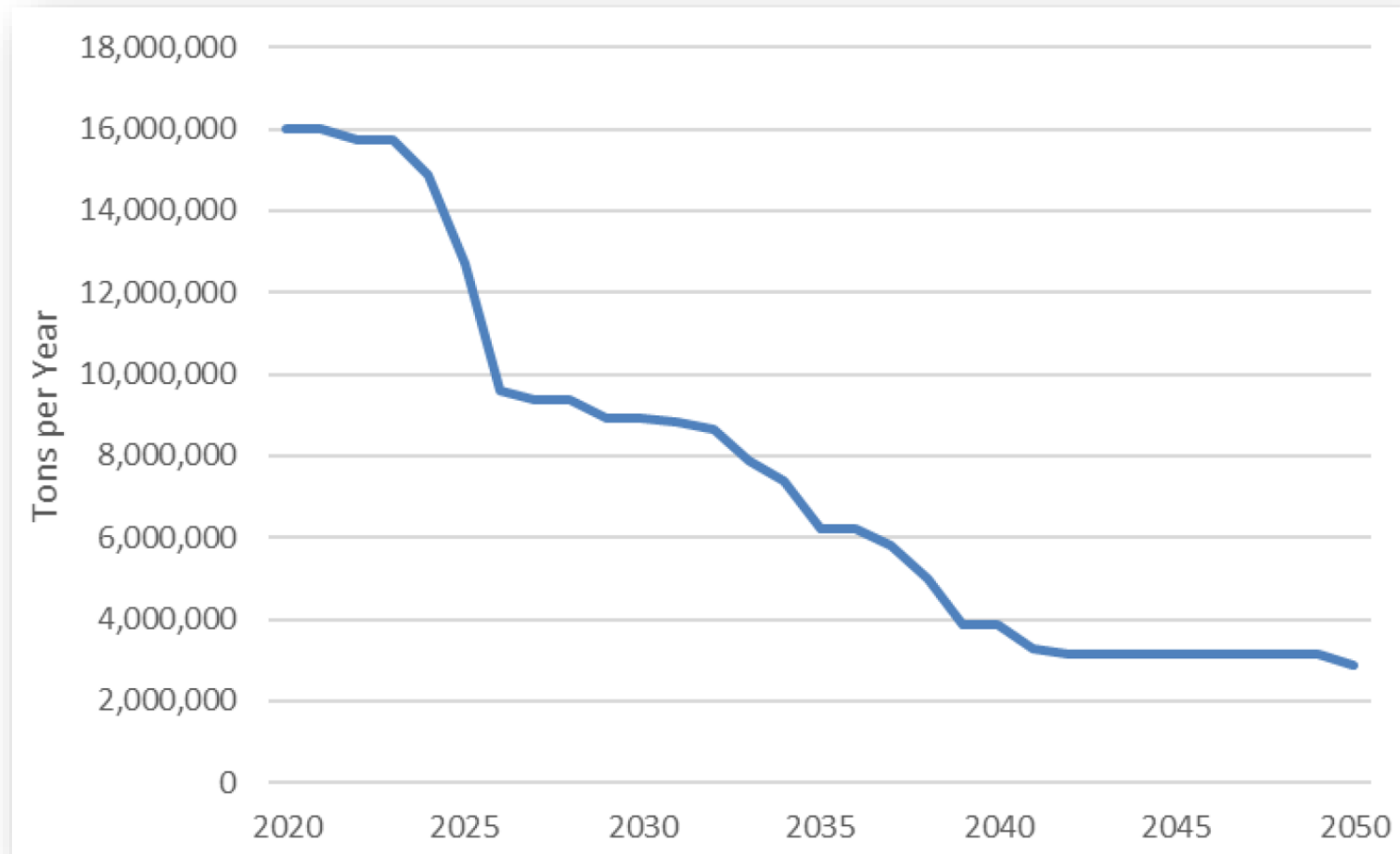
In-State Disposal Capacity Reduction



Out-of-State Waste Disposal



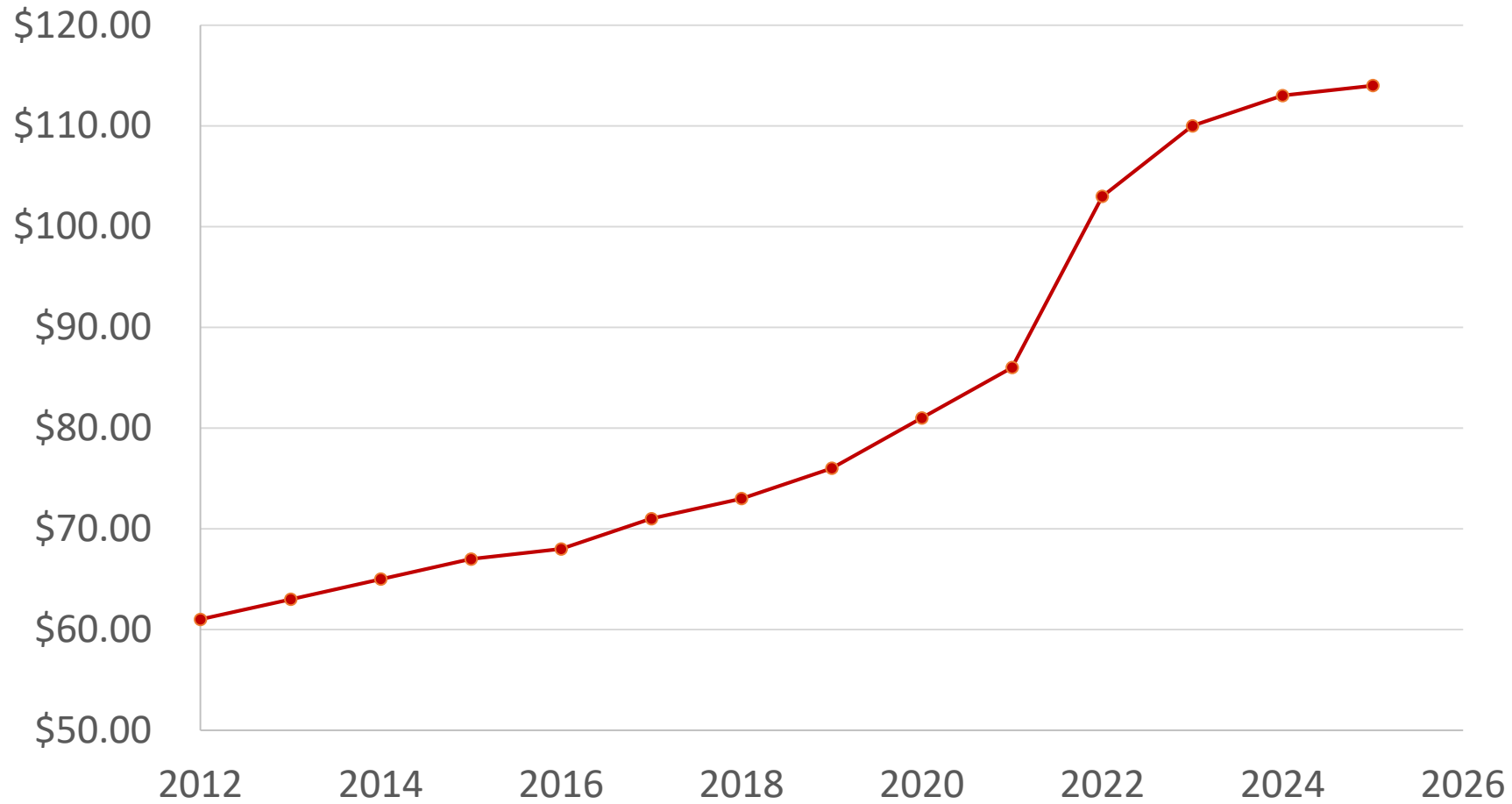
Projected Northeast Landfill Capacity



Projected Northeast Landfill Capacity Through 2050 (ME, MA, NH, VT, RI, CT, NY)

Source: CMMS Amendment, CTDEEP, 2023

CT Average Tip Fees

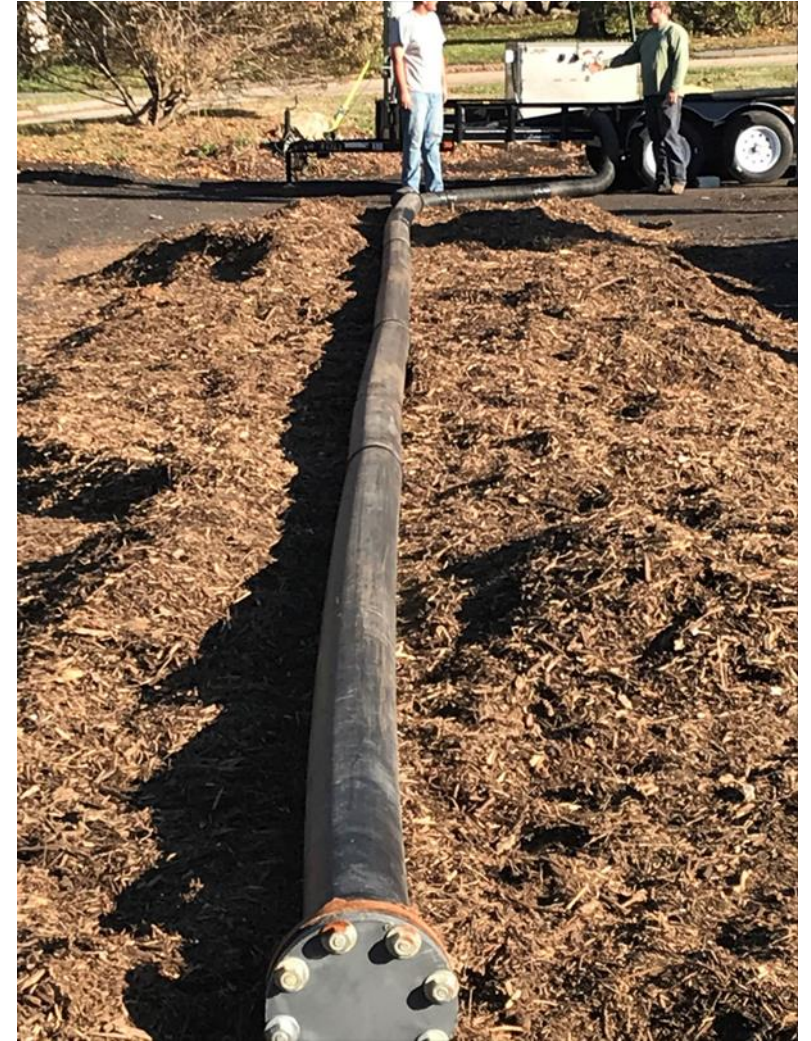


Source: CMMS Amendment, CT DEEP, 2023

Compost Pilot Test

- **Coordination with DEEP**
 - Batch #1: 30 tons of food scraps
 - Batch #2: 40 tons of food scraps
 - May 2020 to March 2021; 11-month process for a pilot test!
- **Test Facility Layout and Construction**
 - September to October 2020
- **Pilot Test Operation**
 - June 2021 to December 2021
- **Test Data**
 - Near-continuous temperature readings
 - Compost samples at 0, 4, 6, and 10 weeks



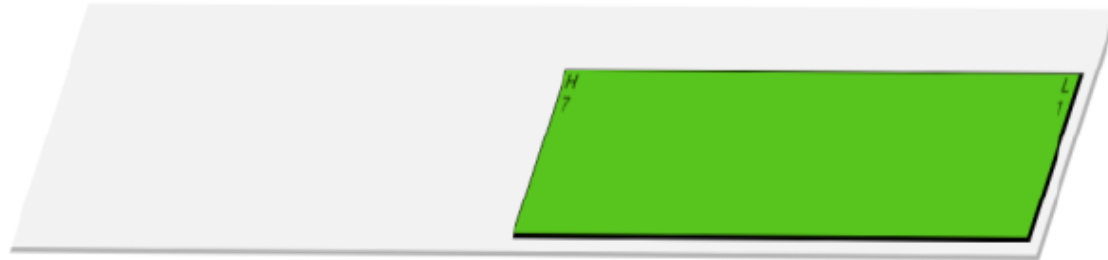






SITE OVERVIEW

■ Phase I
 ■ Phase II
 ■ Phase III
 ■ Available
 ■ Alert



ACTIVE HEAP

BUNKER	HEAP	PHASE	PFRP	BLOWER	BLOWER MODE	BLOWER STATUS
L1	H7	1	Y	OFF	Interval	OFF Mode

HEAP 7

BUNKER 7

Status

PFRP: Y 07/04 02:54

Avg Temp: 154.68°F 07/06 15:55

Current 0°: 13.93 07/06 15:55

Blower Status: OFF Mode OFF

Activity

05 July, 2021 11:52 AM

Heap [H7] - Blower Mode changed from I to I
Mins On: changed from 1 to 1
Mins Off: changed from 10 to 8

[ADD NOTES](#) [HISTORY](#)

Configuration

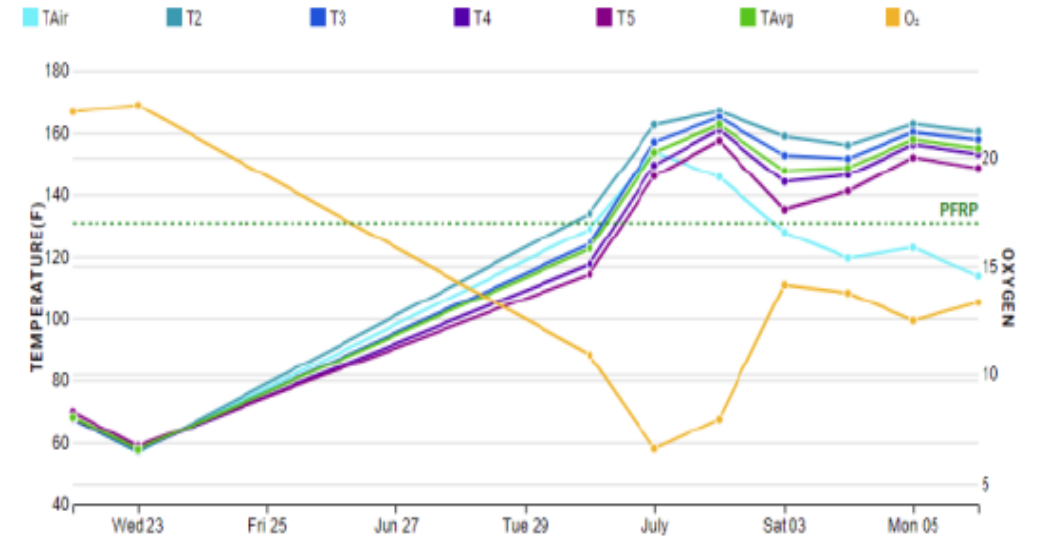
Bunker: Phase: Content: Blower Mode:

Minutes On: Minutes Off:

[CALIBRATE O₂](#) [SAVE](#)

H7 STATISTICS

Include Errors
 Hourly
Daily
Weekly
Realtime



STA Lab Test Results

- Very safe regarding pathogens, a result of the high temperatures that were maintained
- Safe as a soil amendment with low heavy metals detected
- Very stable, well cured, finished compost with no odors or plant toxicity
- Very mature, safe for containers, which means it could be marketed as a bagged product, increasing its value
- Carbon-to-nitrogen ration was normal, so it will release available nitrogen to the soil
- Good source of nutrients and organic matter
- Salinity was low, again, safe for plants



Local Site Plan Approval

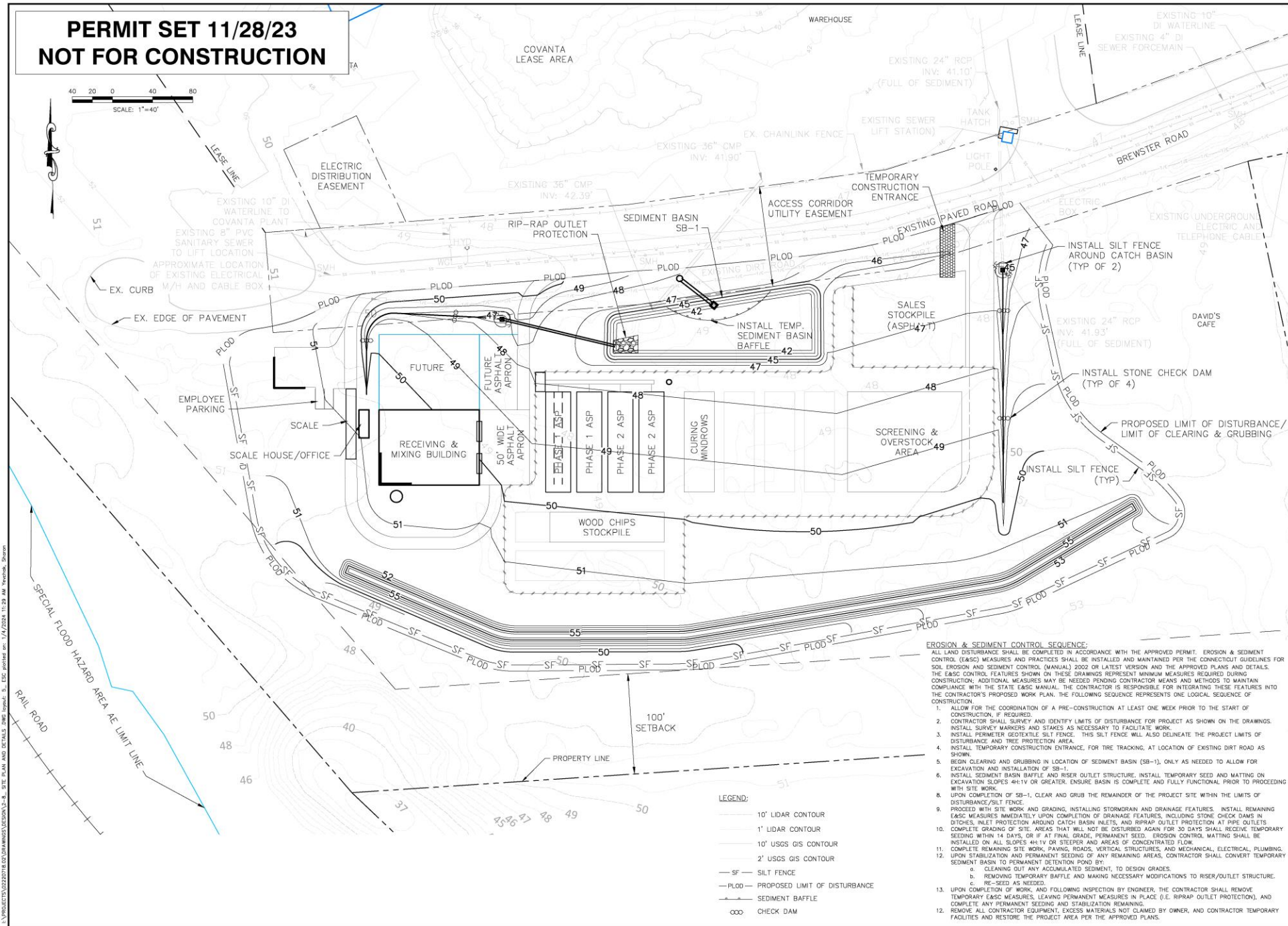
- Initial meeting with the town: June 2023
- Initial application: November 2023
- Response to comments: January 2024
- Board meeting and approval: January 2024

Onondaga County Resource Recovery Agency (OCRRA) Amboy Compost Site - Camillus, New York





PERMIT SET 11/28/23 NOT FOR CONSTRUCTION



- LEGEND:**
- 10' LIDAR CONTOUR
 - 1' LIDAR CONTOUR
 - 10' USGS GIS CONTOUR
 - 2' USGS GIS CONTOUR
 - SF- SILT FENCE
 - PLOD- PROPOSED LIMIT OF DISTURBANCE
 - SEDIMENT BAFFLE
 - CHECK DAM

- EROSION & SEDIMENT CONTROL SEQUENCE:**
- ALL LAND DISTURBANCE SHALL BE COMPLETED IN ACCORDANCE WITH THE APPROVED PERMIT. EROSION & SEDIMENT CONTROL (EASC) MEASURES AND PRACTICES SHALL BE INSTALLED AND MAINTAINED PER THE CONNECTICUT GUIDELINES FOR SOIL EROSION AND SEDIMENT CONTROL (ANNUAL) 2022 OR LATEST VERSION AND THE APPROVED PLANS AND DETAILS. THE EASC CONTROL FEATURES SHOWN ON THESE DRAWINGS REPRESENT MINIMUM MEASURES REQUIRED DURING CONSTRUCTION. ADDITIONAL MEASURES MAY BE NEEDED PENDING CONTRACTOR MEANS AND METHODS TO MAINTAIN COMPLIANCE WITH THE STATE EASC MANUAL. THE CONTRACTOR IS RESPONSIBLE FOR INTEGRATING THESE FEATURES INTO THE CONTRACTOR'S PROPOSED WORK PLAN. THE FOLLOWING SEQUENCE REPRESENTS ONE LOGICAL SEQUENCE OF CONSTRUCTION:
1. ALLOW FOR THE COORDINATION OF A PRE-CONSTRUCTION AT LEAST ONE WEEK PRIOR TO THE START OF CONSTRUCTION, IF REQUIRED.
 2. CONTRACTOR SHALL SURVEY AND IDENTIFY LIMITS OF DISTURBANCE FOR PROJECT AS SHOWN ON THE DRAWINGS. INSTALL SURVEY MARKERS AND STAKES AS NECESSARY TO FACILITATE WORK.
 3. INSTALL PERIMETER GEOTEXTILE SILT FENCE. THIS SILT FENCE WILL ALSO DELINEATE THE PROJECT LIMITS OF DISTURBANCE AND TREE PROTECTION AREA.
 4. INSTALL TEMPORARY CONSTRUCTION ENTRANCE, FOR TIRE TRACKING, AT LOCATION OF EXISTING DIRT ROAD AS SHOWN.
 5. BEGIN CLEARING AND GRUBBING IN LOCATION OF SEDIMENT BASIN (SB-1), ONLY AS NEEDED TO ALLOW FOR EXCAVATION AND INSTALLATION OF SB-1.
 6. INSTALL SEDIMENT BASIN BAFFLE AND RISER/OUTLET STRUCTURE. INSTALL TEMPORARY SEED AND MATTING ON EXCAVATION SLOPES 4H:1V OR GREATER. ENSURE BASIN IS COMPLETE AND FULLY FUNCTIONAL PRIOR TO PROCEEDING WITH SITE WORK.
 7. UPON COMPLETION OF SB-1, CLEAR AND GRUB THE REMAINDER OF THE PROJECT SITE WITHIN THE LIMITS OF DISTURBANCE/SILT FENCE.
 8. PROCEED WITH SITE WORK AND GRADING, INSTALLING STORMDRAIN AND DRAINAGE FEATURES. INSTALL REMAINING EASC MEASURES IMMEDIATELY UPON COMPLETION OF DRAINAGE FEATURES, INCLUDING STONE CHECK DAMS IN DITCHES, INLET PROTECTION AROUND CATCH BASIN INLETS, AND RIPRAP OUTLET PROTECTION AT PIPE OUTLETS.
 9. COMPLETE REMAINING SITE WORK, PARKING, ROADS, VERTICAL STRUCTURES, AND MECHANICAL, ELECTRICAL, PLUMBING, SEEDING WITHIN 14 DAYS, OR IF AT FINAL GRADE, PERMANENT SEED. EROSION CONTROL MATTING SHALL BE INSTALLED ON ALL SLOPES 4H:1V OR STEEPER AND AREAS OF CONCENTRATED FLOW.
 10. COMPLETE REMAINING SITE WORK, PARKING, ROADS, VERTICAL STRUCTURES, AND MECHANICAL, ELECTRICAL, PLUMBING.
 11. UPON STABILIZATION AND PERMANENT SEEDING OF ANY REMAINING AREAS, CONTRACTOR SHALL CONVERT TEMPORARY SEDIMENT BASIN TO PERMANENT DETENTION POND BY:
 - a. CLEANING OUT ANY ACCUMULATED SEDIMENT, TO DESIGN GRADES.
 - b. REMOVING TEMPORARY BAFFLE AND MAKING NECESSARY MODIFICATIONS TO RISER/OUTLET STRUCTURE.
 - c. RE-SEED AS NEEDED.
 12. UPON COMPLETION OF WORK, AND FOLLOWING INSPECTION BY ENGINEER, THE CONTRACTOR SHALL REMOVE TEMPORARY EASC MEASURES, LEAVING PERMANENT MEASURES IN PLACE (I.E. RIPRAP OUTLET PROTECTION), AND COMPLETE ANY PERMANENT SEEDING AND STABILIZATION REMAINING.
 13. REMOVE ALL CONTRACTOR EQUIPMENT, EXCESS MATERIALS NOT CLAIMED BY OWNER, AND CONTRACTOR TEMPORARY FACILITIES AND RESTORE THE PROJECT AREA PER THE APPROVED PLANS.

CLIENT	SOUTHEAST CONNECTICUT REGIONAL RESOURCE RECOVERY AUTHORITY	
	7 HURLBUTT ROAD GALES FERRY, CONNECTICUT 06335	
SHEET TITLE	EROSION & SEDIMENT CONTROL PLAN	
	ASP COMPOST FACILITY 132 ROUTE 12 TOWN OF PRESTON, CONN	
DATE	11/28/23	
SCALE	AS SHOWN	
DRAWING NO.	5	of 8

I:\PROJECTS\2022\2023\116_02_USGSMMS\VERSION_3_4_ SITE PLAN AND DETAILS (RIG) Layout_1.dwg (2024-11-29 AM 10:46:36) - Sharon

Discussion & Questions



David Aldridge
Executive Director

www.SCRARRA.org



SCRARRA