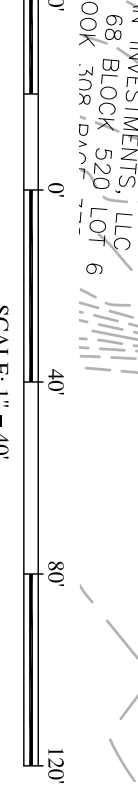




KAN INVESTMENTS, LLC
 MAP 68, BLOCK 520, LOT 5
 6/27/14, 6/22/14, 6/22/14
 6/27/14, 6/22/14, 6/22/14

KAN INVESTMENTS, LLC
 MAP 68, BLOCK 520, LOT 6
 6/27/14, 6/22/14, 6/22/14
 6/27/14, 6/22/14, 6/22/14



UNIT COUNT	
UNITS	BEDROOMS
TWO-BEDROOM UNITS	8
THREE-BEDROOM UNITS	28
FOUR-BEDROOM UNITS	4
TOTAL	40

PLAN REVISIONS			
REV. NO.	DATE	DESCRIPTION	DRAWN BY
1	4/11/24	GRADING & DRAINAGE PLAN	TMJM, SPC

ISSUED FOR REVIEW

CONCEPTUAL SITE PLAN #3

HABITAT FOR HUMANITY OF EASTERN CONNECTICUT
 8, 9 & 11 COLBY DRIVE
 PARCEL IDS: 08-52018, 08-52019, 08-52011 & 08-530680
 LEDYARD, CONNECTICUT

PREPARED FOR
 HABITAT FOR HUMANITY OF EASTERN CONNECTICUT, INC.

CSP-3

Sheet 1 of 1

CHERENZIA & ASSOCIATES, LTD.

99 Mechanics St.
 Westport, CT 06891
 Tel: 860.599.0900
 www.cherenzia.com

99 Mechanics St.
 Westport, CT 06891
 Tel: 860.599.0900

Land Use Planners
 Environmental Engineers