

FD#10

RECEIVED

APR 23 2026

Land Use Department

From: [Allyn, Joseph](#)
To: [Elizabeth Burdick](#)
Cc: [Hannah Gienu](#); [Anna Wynn](#); [LaFontaine, Doug](#)
Subject: 740 Colonel Ledyard Highway- 36 Unit Development- GU Comments
Date: Thursday, April 23, 2026 1:15:19 PM
Attachments: [image001.png](#)
[Water Spec Drawings.pdf](#)
[GU Comments-Proposed 36 Units 740 Colonel Ledyard Hwy.doc](#)

Good afternoon Liz,

Please find attached GU Comments regarding the proposed 36 Unit Development at 740 Colonel Ledyard Highway.

These plans are Not Approved by Groton Utilities Water Department on behalf of Ledyard WPCA.

Would you please forward the attached Water Spec Drawings PDF along with the Comments?

Please feel free to send along my contact information as it is helpful for us to be in direct contact with the engineers/owners when addressing comments. My info is also at the end of the comments.

Please let me know if you have any questions or concerns!

Thanks,

Joe



Joseph Allyn
Water Technical Aide
Water & Wastewater Project Management
Office: 860-629-7014
Cell: 860-625-2591
allynj@grotonutilites.com

CONFIDENTIALITY NOTICE: As a public entity, the City of Groton is subject to the provisions of the Freedom of Information Act. Under this legislation the City may be required to disclose the content of an e-mail (or a response to it) unless the information it contains is protected from disclosure under an exemption in the Act. Please consider this when sending or

CITY OF GROTON
DEPARTMENT OF UTILITIES
SITE PLAN REVIEW SHEET

APR 23 2026

Land Use Department

Title of Plan Proposed 36 Unit Apartment Development

Latest Revision Date 01/2027

Location 740 Colonel Ledyard Highway

W.I.P.# 7-1621

Engineer Killingly Engineering Associates

Phone # (860) 779-7299

Reviewed By JLA DLL GAB

Date of Review 4/23/2026

Check for the Following:

Notes Required on Plan

Yes No

1. Note - All water main and service installations shall conform to the City of Groton, Department of Utilities, Water Main and Service Construction Specifications, with most current revisions.

X___

2. Note - Approved backflow preventers are required on all fire sprinkler and domestic water lines.

X___

3. Note - Remote water meter read box required.

X___

4. Size of water mains and services and note indicating minimum cover shall be 4' - 6' from finish grade.

X___

5. Pipe separations - 10' min between water and sewer
10' min between water and buildings
5' min between water and catch basins or drain pipes.

X___

6. Site must be at subgrade before water utilities can be installed.

X___

7. Valve locations - All branch line valves to be located as close as possible to main lines.

X___

8. Engineer should provide flow calculations to confirm hydrant flow and domestic flow requirements (meter size).

X___

9. Architectural plans showing utility room locations and entry point of water service.

X___

10. Meter location inside building or meter pit.

11. Electronic Copy of the site plan is required

X___

12. Is site located in Groton Utilities' watershed?

SEE COMMENT 1

13. Comments: PLEASE SEE GROTON UTILITIES' COMMENTS BEGINNING ON PAGE 2. Site plan is **NOT APPROVED** by Groton Utilities' Water Department.

APR 23 2026

CITY OF GROTON
DEPARTMENT OF UTILITIES
SITE PLAN REVIEW COMMENTS

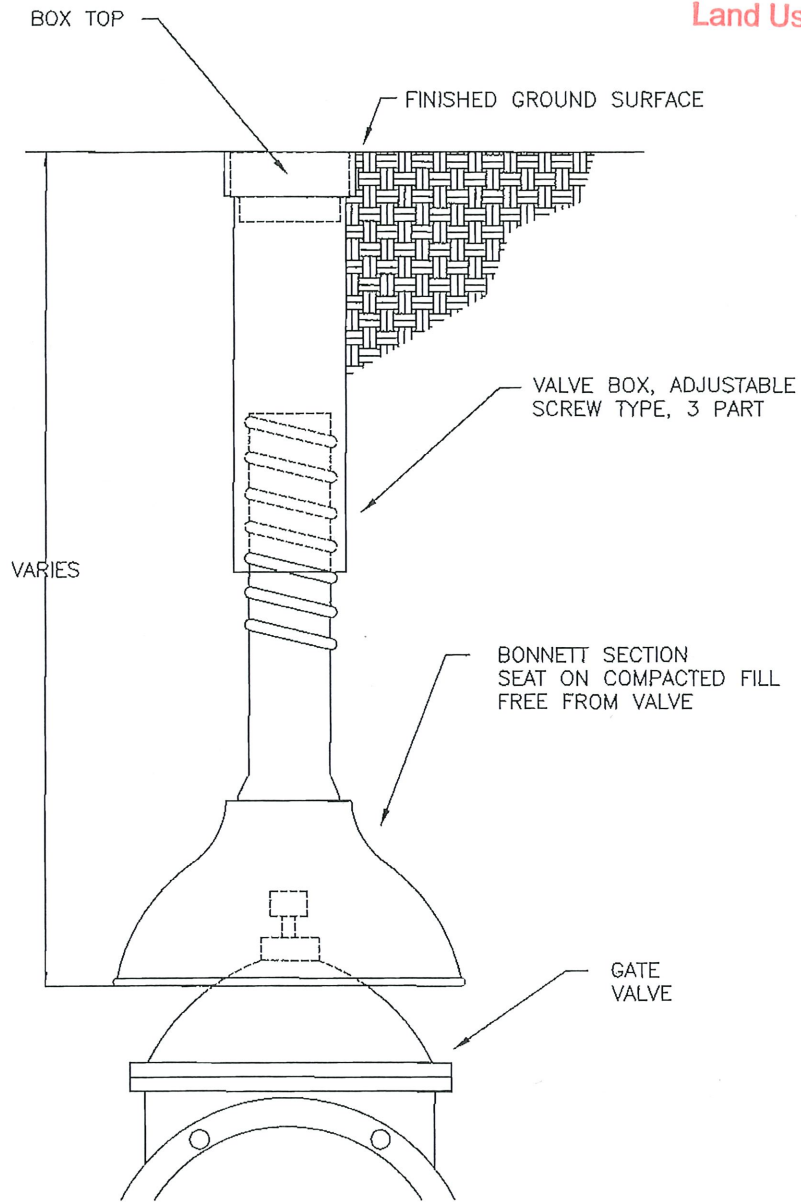
Land Use Department

1. THE PARCEL AND GROTON UTILITIES WATERSHED BOUNDARY ONLY BARELY MEET. BASED ON THE PLANS, THE CONSTRUCTION AND STORMWATER FLOW APPEAR TO DRAIN EASTWARD, TOWARDS AWAY FROM OUR RESERVOIR. THEREFORE, WE HAVE NO COMMENTS OR CONCERNS REGARDING THE WATERSHED AT THIS TIME.
2. PLEASE CONFIRM WITH LEDYARD WPCA ON AN EASEMENT IN FAVOR OF THE WPCA FOR THE EXISTING 16" WATER MAIN RUNNING THROUGH THE PARCEL. ADD EASEMENT TO PLANS.
3. A RECORD PLAN OF THE EXISTING 16" MAIN CAN BE PROVIDED UPON REQUEST TO AID IN PROPERLY LOCATING IT ON THIS SITE PLAN SET.
4. PLEASE REMOVE ALL WATER-RELATED DETAILS ON SHEET 7. ADD IN THE DETAILS FROM THE ATTACHED GROTON UTILITIES WATER SPEC DRAWINGS.
5. REMOVE "GROTON UTILITIES WATER COMPANY" AND OTHER UTILITY NAMES FROM ANY NOTE ON THE PLAN. REPLACE THIS WITH "LEDYARD WPCA."
6. THERE ARE MULTIPLE NOTES THAT CALL OUT OTHER WATER PURVEYORS SUCH AS CT WATER COMPANY (MOSTLY IN THE "WATER MAIN INSTALLATION NOTES" ON SHEET 3). REMOVE THESE NOTES OR REWORK THEM TO MATCH THE ATTACHED SPEC DRAWINGS.
7. COORDINATE DIRECTLY WITH WESTON AND SAMPSON ENGINEERING FIRM FOR SEWER NEEDS. THEY ARE ACTING ON BEHALF OF LEDYARD WPCA TO COORDINATE TIE-INS TO EXISTING LOW PRESSURE SEWER SYSTEM.
8. THERE IS NO CALL-OUT ON SHEET 2 FOR THE EXISTING FEED INTO THE SCHOOL AT 740 COLONEL LEDYARD HIGHWAY. WHAT IS THE PLAN FOR THIS? IT MAY NEED BE CUT AND CAPPED AT THE EXISTING 8" SHUT-OFF VALVE GOING TO THE PARCEL.
9. IS THERE ANY WAY TO SHORTEN THE NEW 6" FEED INTO THE EXISTING SCHOOL? IT SEEMS UNNECESSARILY LONG BASED ON THE PLAN. MOVING THE TAP ON THE 8" NORTH WOULD SHORTEN THIS RUN. ALSO, REMOVE THE 90 DEGREE BEND IN IT AND CHANGE IT TO (2) 45 DEGREE BENDS TO MAKE THE SWEEP.
10. IS FIRE PROTECTION GOING TO BE NEEDED ON THE EXISTING SCHOOL BUILDING? NO MENTION OF FP VS DOMESTIC ON THAT 6" LINE.
11. ADD AN INLINE GATE VALVE TO THE 8" MAIN DIRECTLY AFTER THE 6" TAP FOR THE SCHOOL.
12. WILL 8" WATER MAIN BE LARGE ENOUGH TO SUPPORT FUTURE DEVELOPMENT ON THIS PARCEL? STATIC PRESSURES ARE FAIRLY LOW. ARE THERE PLANS FOR FUTURE BUILDINGS HERE?
13. PLEASE REACH OUT TO JOSEPH ALLYN @ GROTON UTILITIES FOR QUESTIONS AND CONCERNS ADDRESSING THESE COMMENTS. CONTACT INFO:
ALLYNJ@GROTONUTILITIES.COM CELL: 860-625-2591 OFFICE: 860-629-7014

RECEIVED

APR 23 2026

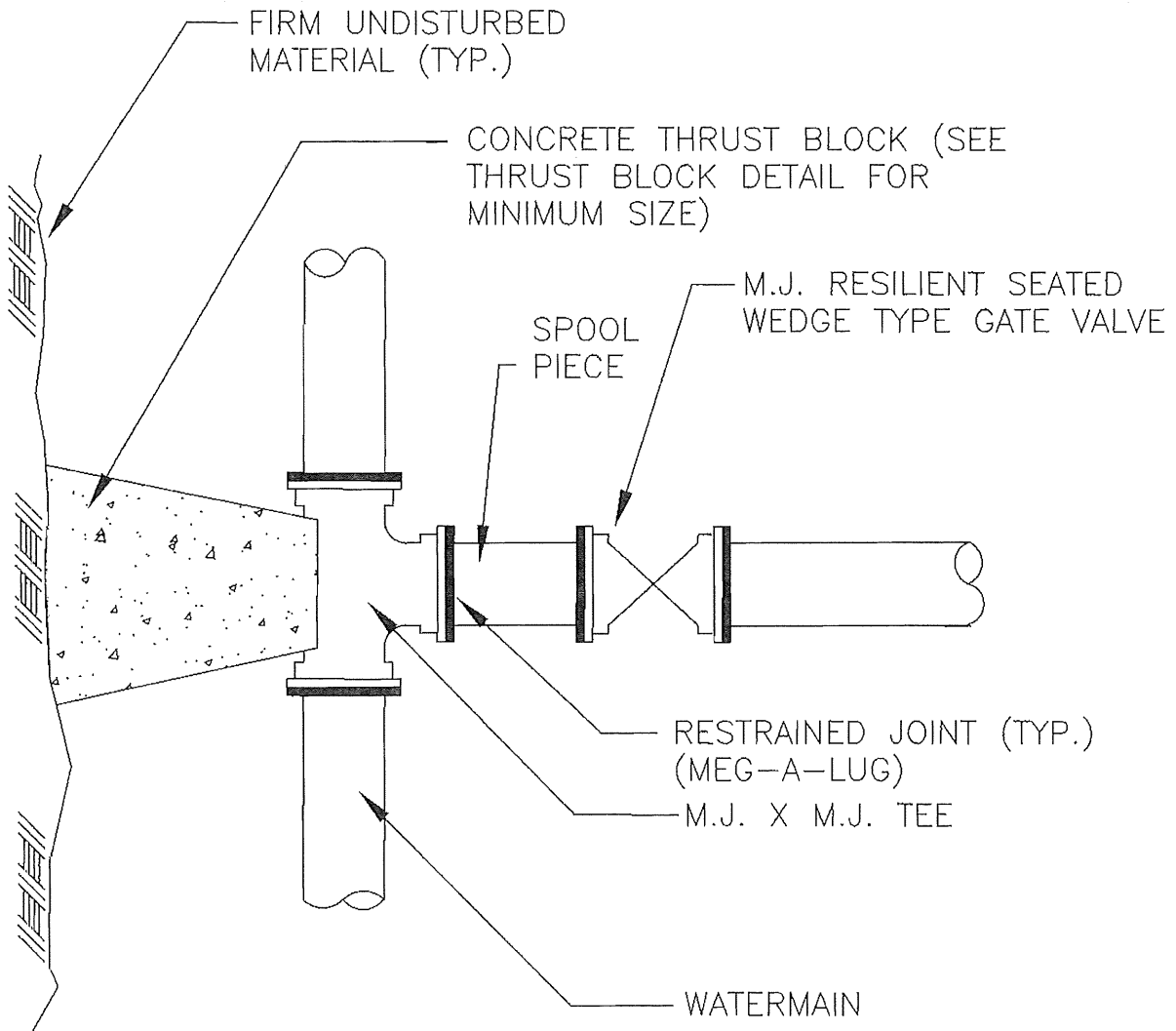
Land Use Department



GATE BOX DETAIL

NOT TO SCALE

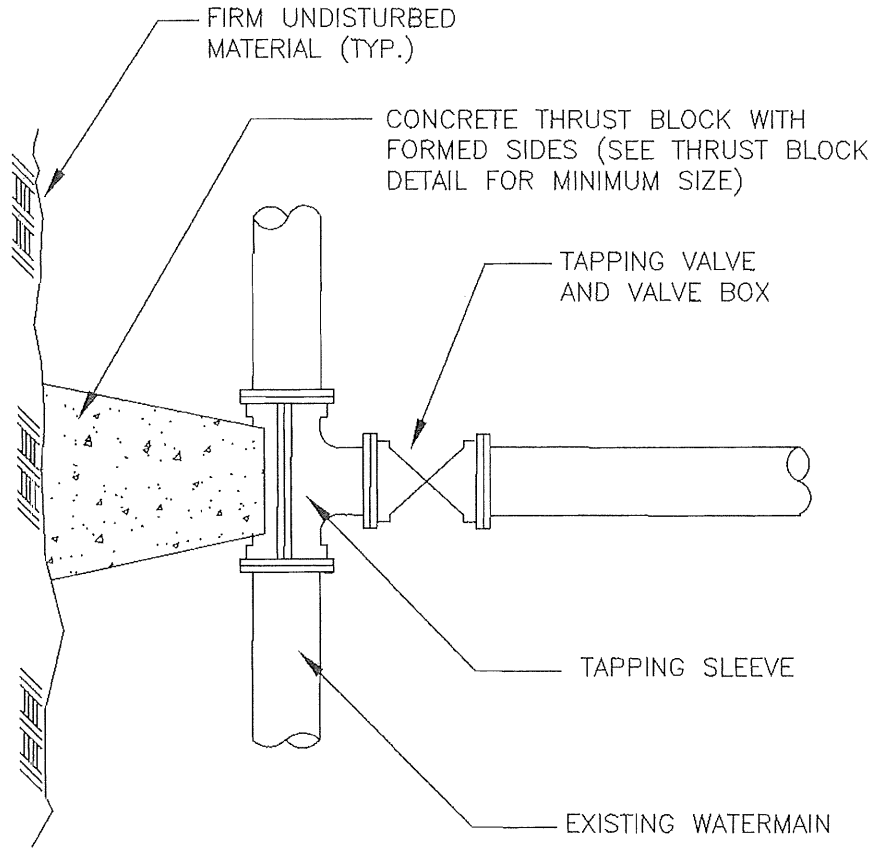
APPROVED	DATE	STANDARDS TYPICAL GATE BOX	BY D.L.C.	CHECKED
			REVISED	CHECKED
			DATE	1/8/01
				1



GATE VALVE CONNECTION DETAIL

NOT TO SCALE

APPROVED	DATE	<p>STANDARDS</p> <p>TYPICAL GATE VALVE CONNECTION</p>	BY D.L.C.	CHECKED
			REVISED	CHECKED
			DATE	1/8/01
			2	

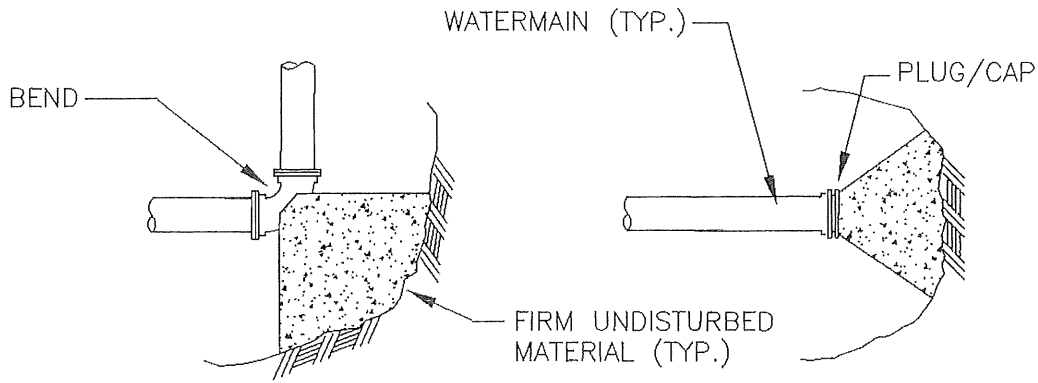


NOTE: CONTRACTOR TO VERIFY OUTSIDE DIAMETER OF EXISTING MAIN.

TAPPING SLEEVE & VALVE DETAIL

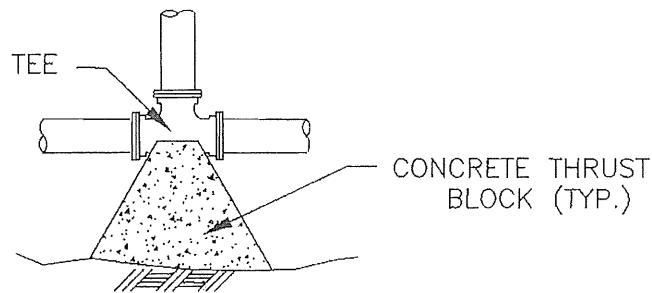
NOT TO SCALE

APPROVED	DATE	STANDARDS TAPPING SLEEVE AND VALVE	BY D.L.C.	CHECKED
			REVISED	CHECKED
			DATE	1/8/01
			3	



(TYP.) BEND-PLAN VIEW

PLUG/CAP-PLAN VIEW



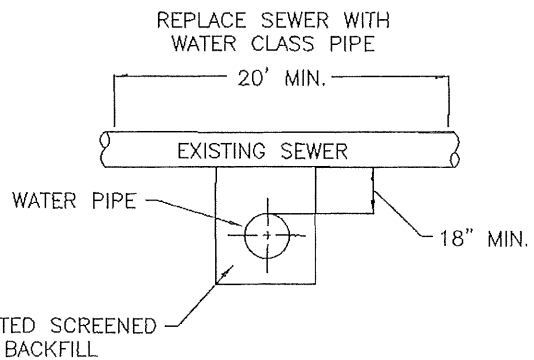
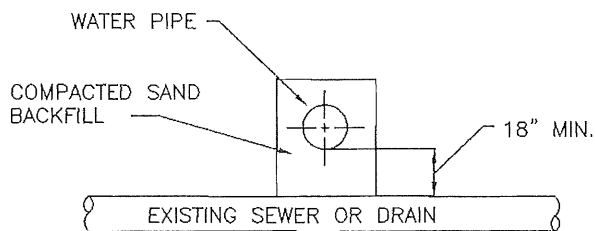
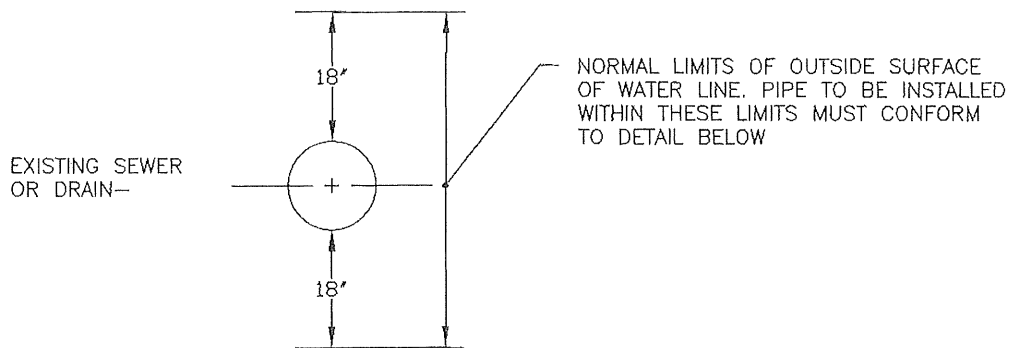
TEE-PLAN VIEW

TABLE OF BEARING AREAS (S.F.)			
SIZE OF MAIN (IN.)	BEND (90)	BENDS (45 & UNDER)	TEES, CAPS OR PLUGS
8 & UNDER	6	3	4
10 & 12	12	6	9

- NOTES: 1. CONCRETE FOR THRUST BLOCKS SHALL HAVE MINIMUM COMPRESSIVE STRENGTH OF 2000 PSI AT 28 DAYS.
 2. THRUST BLOCK BEARING AREAS TOO BE IN ACCORDANCE WITH TABLE, UNLESS DETERMINED OTHERWISE BY THE ENGINEER BECAUSE OF SOIL CONDITIONS.
 3. THRUST BLOCK SIDES SHALL BE FORMED WITH PLYWOOD.

THRUST BLOCK DETAILS
 NOT TO SCALE

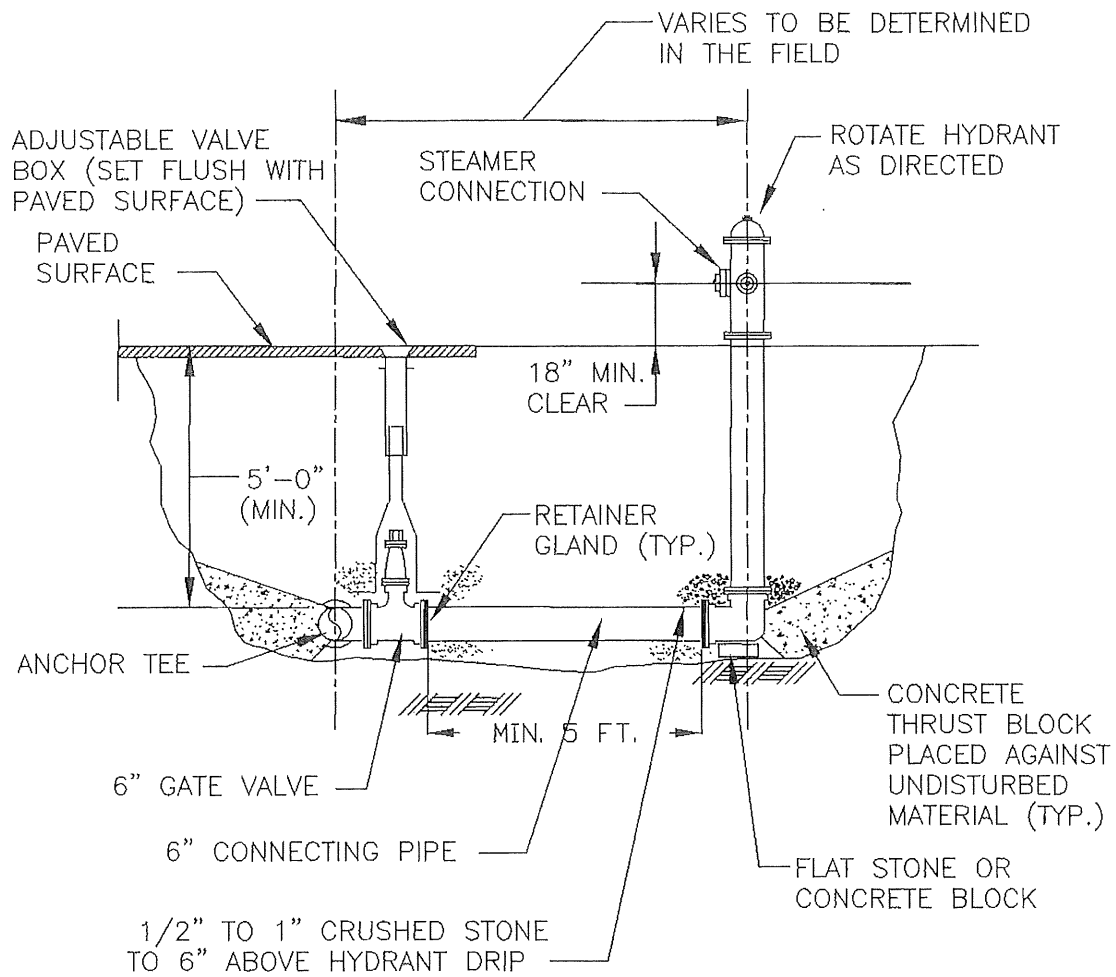
APPROVED	DATE	STANDARDS CONCRETE BACKING FOR WATER PIPE	BY D.E.I.	CHECKED
			REVISED	CHECKED
			DATE	2/4/74
				4



TYPICAL SEWER AND DRAIN CROSSING

NOT TO SCALE

APPROVED	DATE	STANDARDS TYPICAL SEWER AND DRAIN CROSSING DETAIL	BY D.E.I.	CHECKED
			REVISED	CHECKED
			DATE	12/18/75
			5	



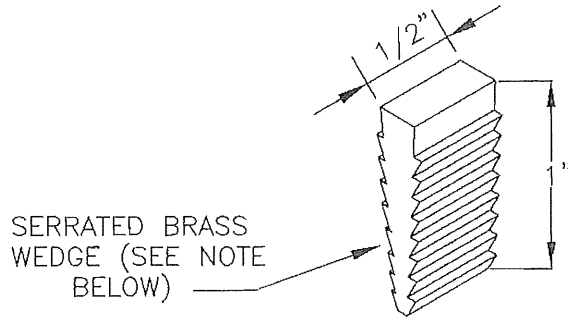
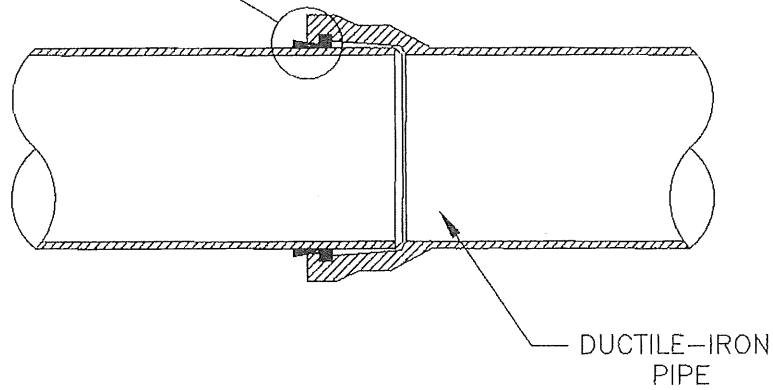
NOTE: DEPTH OF HYDRANT BURY TO SUIT INSTALLED DEPTH OF COVER OVER WATERMAIN.

HYDRANT ASSEMBLY DETAIL

NOT TO SCALE

APPROVED	DATE	STANDARDS TYPICAL HYDRANT AND VALVE DETAIL	BY D.L.C.	CHECKED
	HYDRANT.DWG		REVISED	CHECKED
			DATE	1/8/01
			6	

INSTALLED SERRATED
BRASS WEDGE (SEE
DETAIL BELOW)

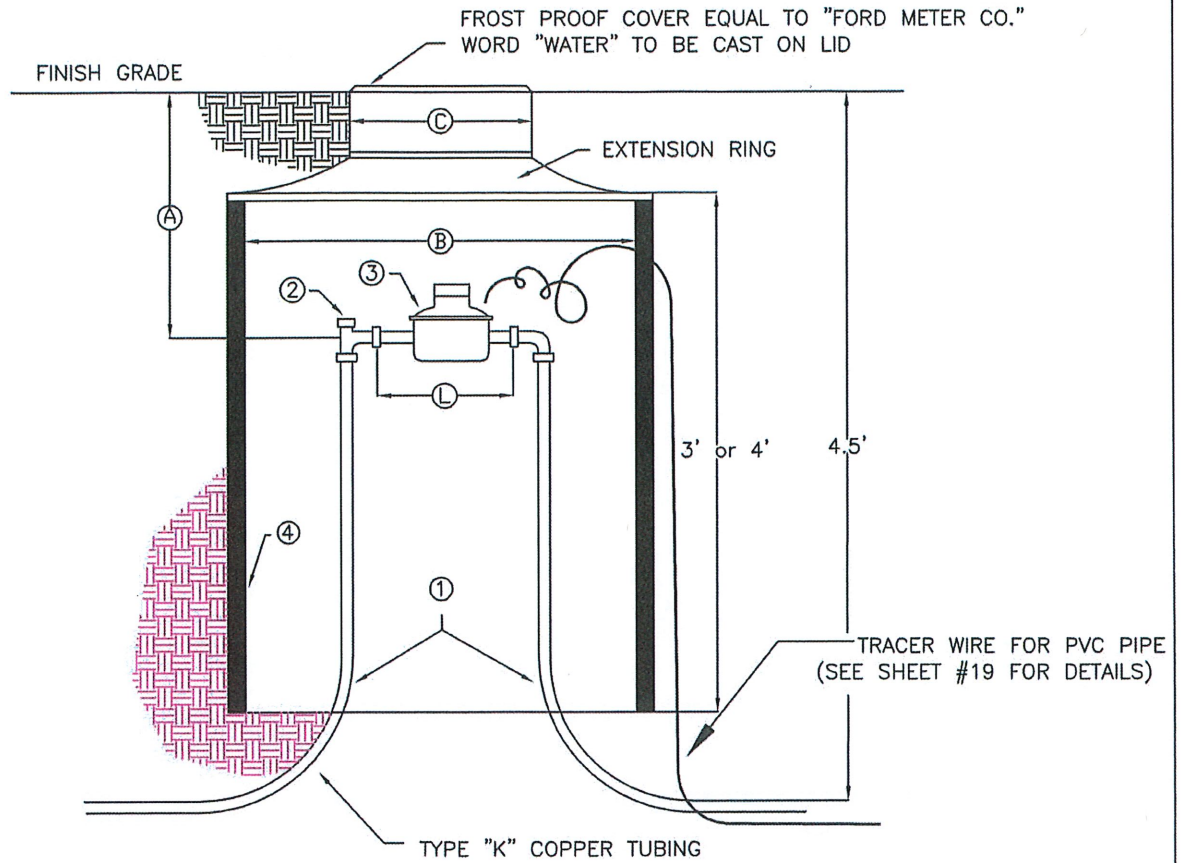


NOTE:
BRASS WEDGES ARE TO BE INSTALLED ON ALL DUCTILE-IRON, PUSH-ON
PIPING, INCLUDING HYDRANT BRANCHES, ETC; TO PROVIDE FOR ELECTRICAL
THAWING. FOR 2" THROUGH 12" PIPE, TWO WEDGES SHALL BE USED PER
JOINT; FOR LARGER DIAMETER PIPE FOUR WEDGES SHALL BE USED PER
JOINT. EACH WEDGE IS DRIVEN INTO THE OPENING BETWEEN THE PLAIN
END AND THE BELL UNTIL SNUG. WHEN FOUR WEDGES ARE USED, THEY
ARE INSTALLED SIDE BY SIDE, IN PAIRS.

SERRATED BRASS WEDGE DETAIL

NOT TO SCALE

APPROVED	DATE	<p>STANDARDS</p> <p>TYPICAL SERRATED BRASS WEDGES TO PROVIDE ELECTRICAL THAWING OF WATER PIPING</p>	BY D.L.C.	CHECKED D.E.I.
			REVISED	CHECKED
			DATE	3/30/81
			7	

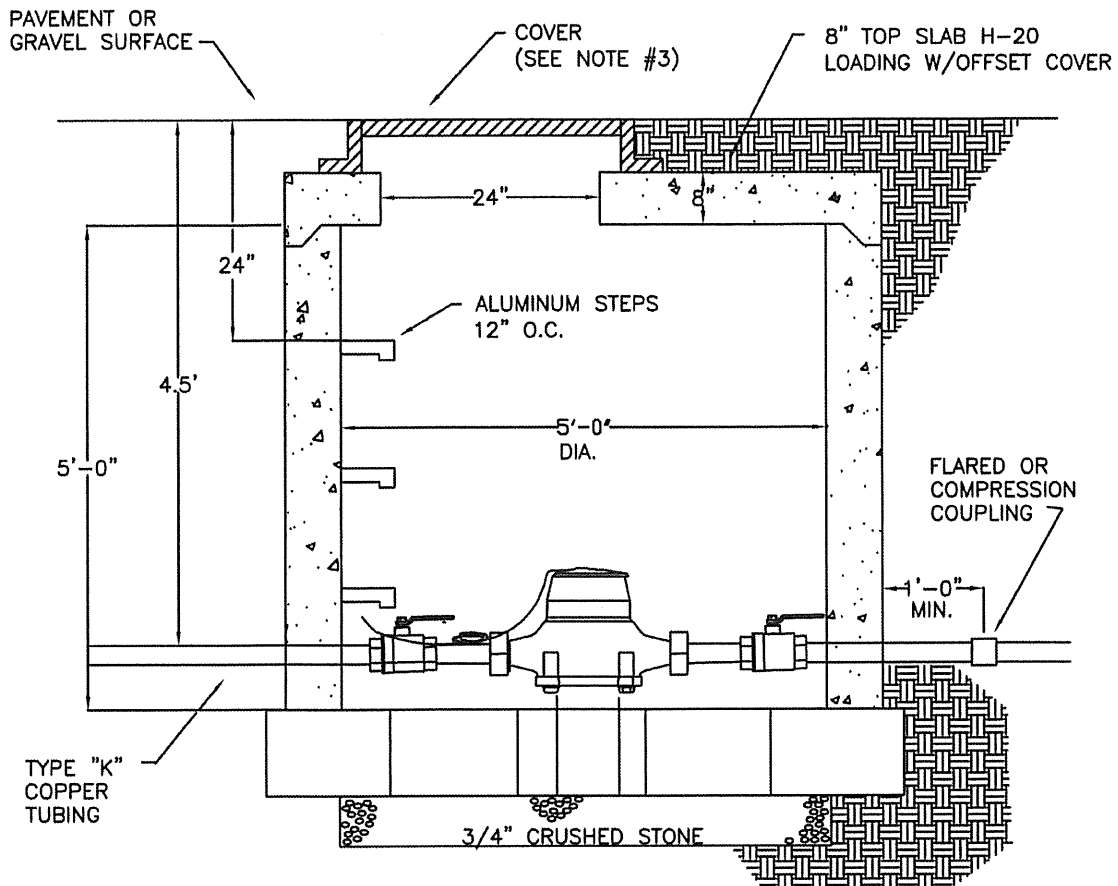


METER PIT	COVER	A	B	C	D	COUPLING NUT	ANGLE VALVE	COPPER TUBE
	FORD							
5/8"	NO. W3	14"	20"	11-1/2"	7-1/2"	1"	3/4"	3/4"
3/4"	NO. W3	16"	20"	11-1/2"	9"	1"	3/4"	3/4"
1"	NO. 24	18"	24"	20"	10-3/4"	1 1/4"	1"	1"
NO.								
1	COPPER TUBING - TYPE K							
2	ANGLE METER STOP							
3	METER							
4	P.V.C. PIPE							
5	COVER AND FRAME FROSTPROOF							
FOR 1" METER SIZE ONLY: AREA SUBJECT TO TRAFFIC: FORD NO. 24 HEAVY WEIGHT COVER AREA SUBJECT TO NON-TRAFFIC: FORD NO. 24 STANDARD COVER								

WATER METER PIT 5/8"-1"

NOT TO SCALE

APPROVED	DATE	STANDARDS WATER METER PIT 5/8" - 1"	BY D.E.I.	CHECKED
			REVISED M.E.D	CHECKED
			DATE 10/29/20	
				8

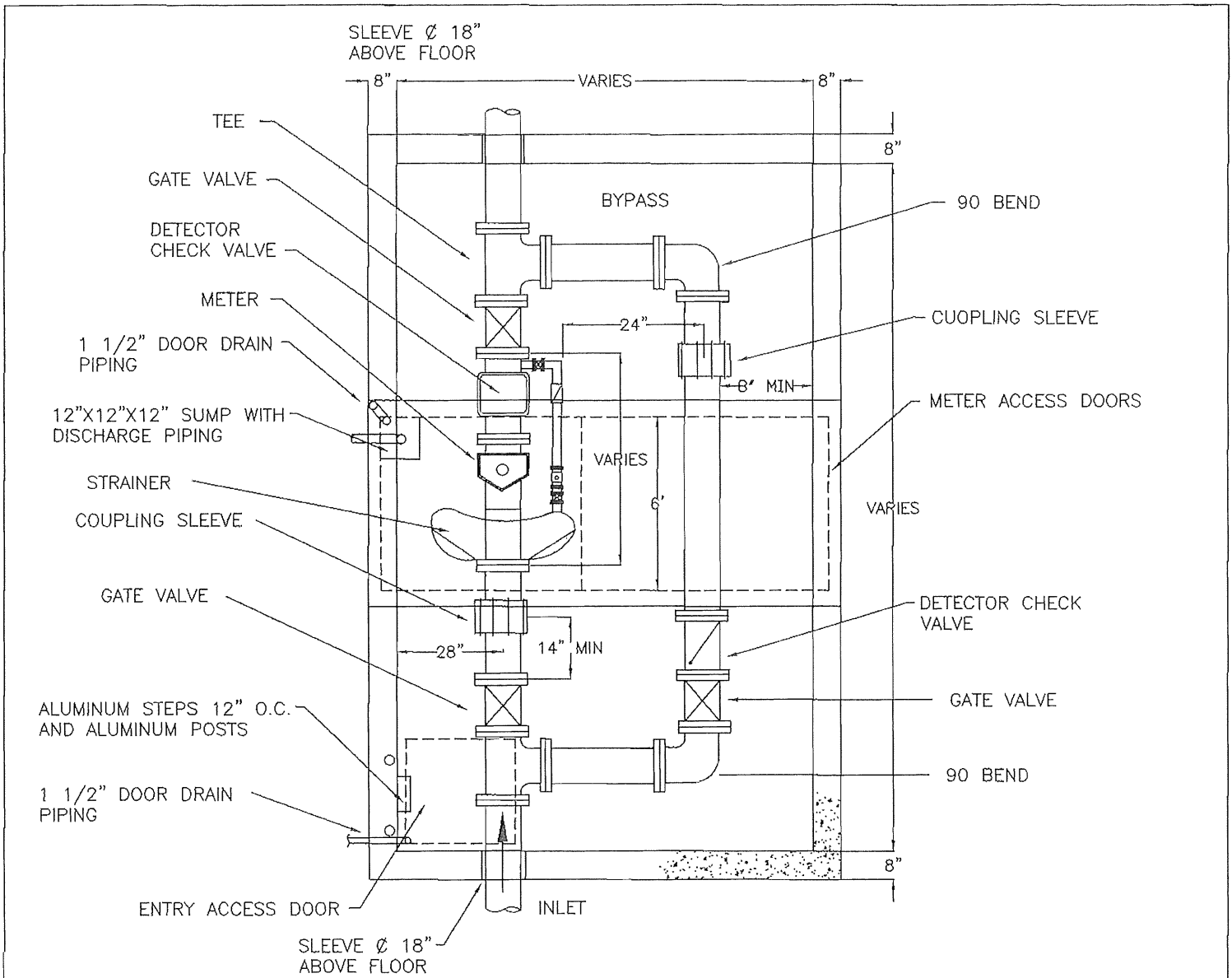


- NOTES:
1. INSTALL VALVES ON BOTH SIDES OF METER (FULL FLOW VALVES)
 2. METER SPACER LOANED BY UTILITIES DEPT. FOR CONSTRUCTION
 3. AREAS SUBJECT TO TRAFFIC: BILCO TYPE J-2 REINFORCED STEEL DOOR (2'-6"X2'-6"), H-20 LOADING
AREAS SUBJECT TO NON-TRAFFIC: BILCO TYPE J-2AL ALUMINUM DOOR (2'-6"X2'-6")
 4. MIN. HEIGHT CLEARANCE INSIDE METER PIT 5'-8"
 5. WHERE REMOTE METERS ARE REQUIRED, WIRE WILL BE INSTALLED IN PVC CONDUIT TO THE BUILDING OR 4"X4" PRESSURE TREATED POST INSTALLED 4 FT. ABOVE GRADE
 6. FOR PVC SERVICES FROM METER PIT BUILDING TRACER WIRE WILL BE INSTALLED BY CONTRACTOR.
* TRACE WIRE DIRECT BURIAL #12 AWG SOLID (0.0808" DIAMETER), STEEL CORE SOFT DRAWN TRACER WIRE, #250 AVERAGE TENSILE BREAK LOAD, 30 MIL HIGH MOLECULAR-HIGH DENSITY POLYETHYLENE JACKET COMPLYING WITH ASTM-D-1248, 30 VOLT RATING.

METER PIT 1 1/2" & 2"

NOT TO SCALE

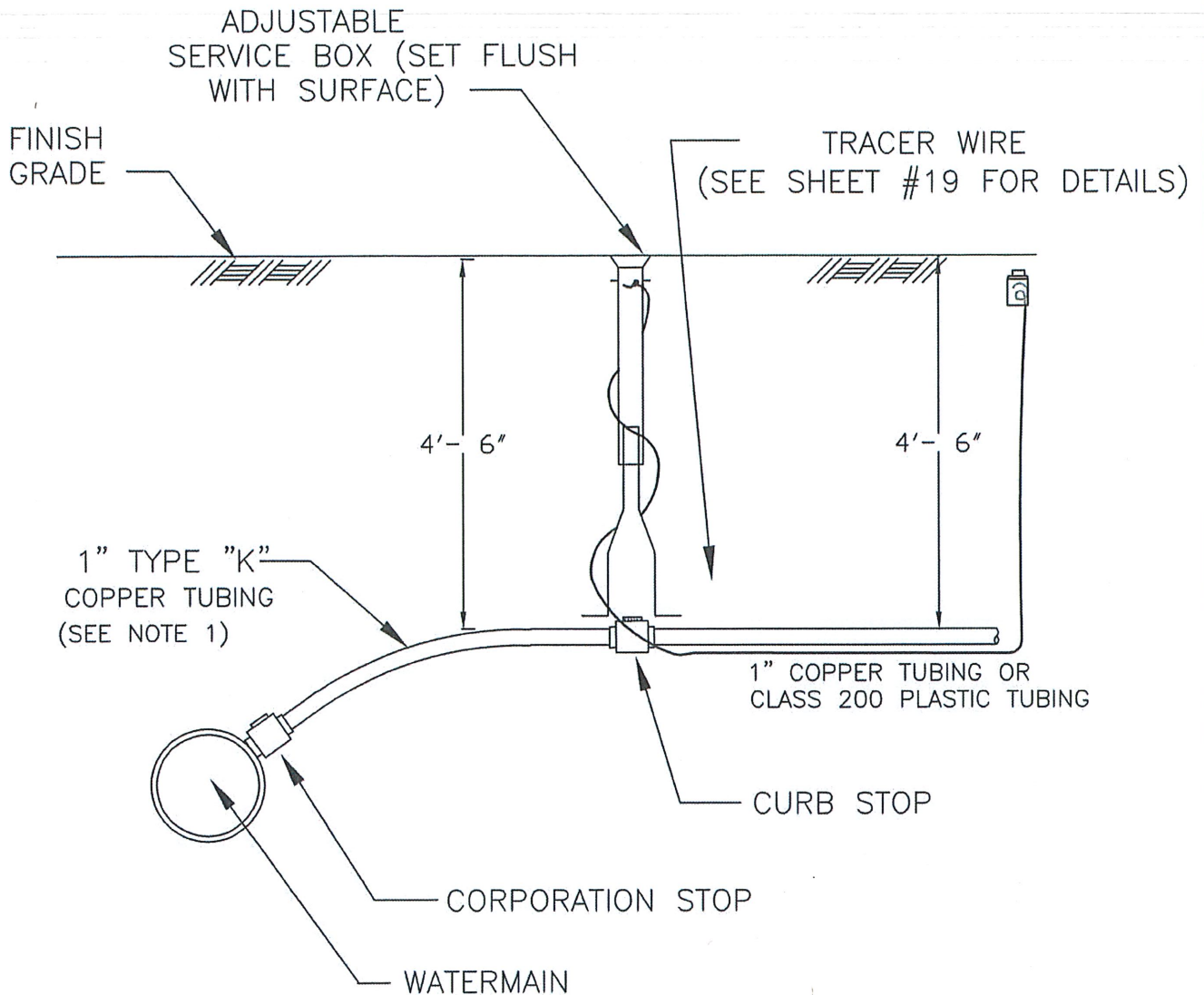
APPROVED	DATE	STANDARDS WATER METER PIT 1 1/2" & 2"	BY M.S.W.	CHECKED
			REVISED	M.E.D CHECKED
			DATE	10/29/20
				9



INSIDE HEIGHT 6'04" 3000LB. CONCRETE
 1/2" DIA. RODS 12" O.C. BOTH WAYS, DOUBLE AT EDGES.
 4" CONCRETE FLOOR, SLOPE TO SUMP.
 SUMP LOCATION, DISCHARGE PIPING, TO BE DETERMINED BY FIELD CONDITIONS
 USE FLANGE FITTINGS INSIDE METER PIT.
 SUPPORT METER AND VALVES ON CONCRETE FOUNDATIONS, VALVES OPEN LEFT.
 (2) - 2 1/2" ANODIZED ALUMINUM, CONCRETE-FILLED POSTS, 36" HIGH AND 22" APART,
 EMBEDDED 6" IN CONCRETE

SERVICE SIZE	METER SIZE	METER LENGTH	METER PIT WIDTH	METER PIT LENGTH	BYPASS SIZE
3"	3"	19"	7'-0"	12'-0"	3"
4"	4"X1 1/2"	33"	7'-0"	12'-0"	4"
6"	6"X2"	45"	8'-0"	14'-0"	6"
8"	8"X2"	53"	8'-0"	16'-0"	8"
10"	10"X2"	68"	8'-0"	18'-0"	10"
12"	10"X2"	68"	8'-0"	19'-0"	12"

APPROVED	DATE	STANDARDS WATER METER PIT 3", 4", 6", 8", 10", 12"	BY R.A.R.	CHECKED
			REVISED	CHECKED
			DATE	4/5/94
				10

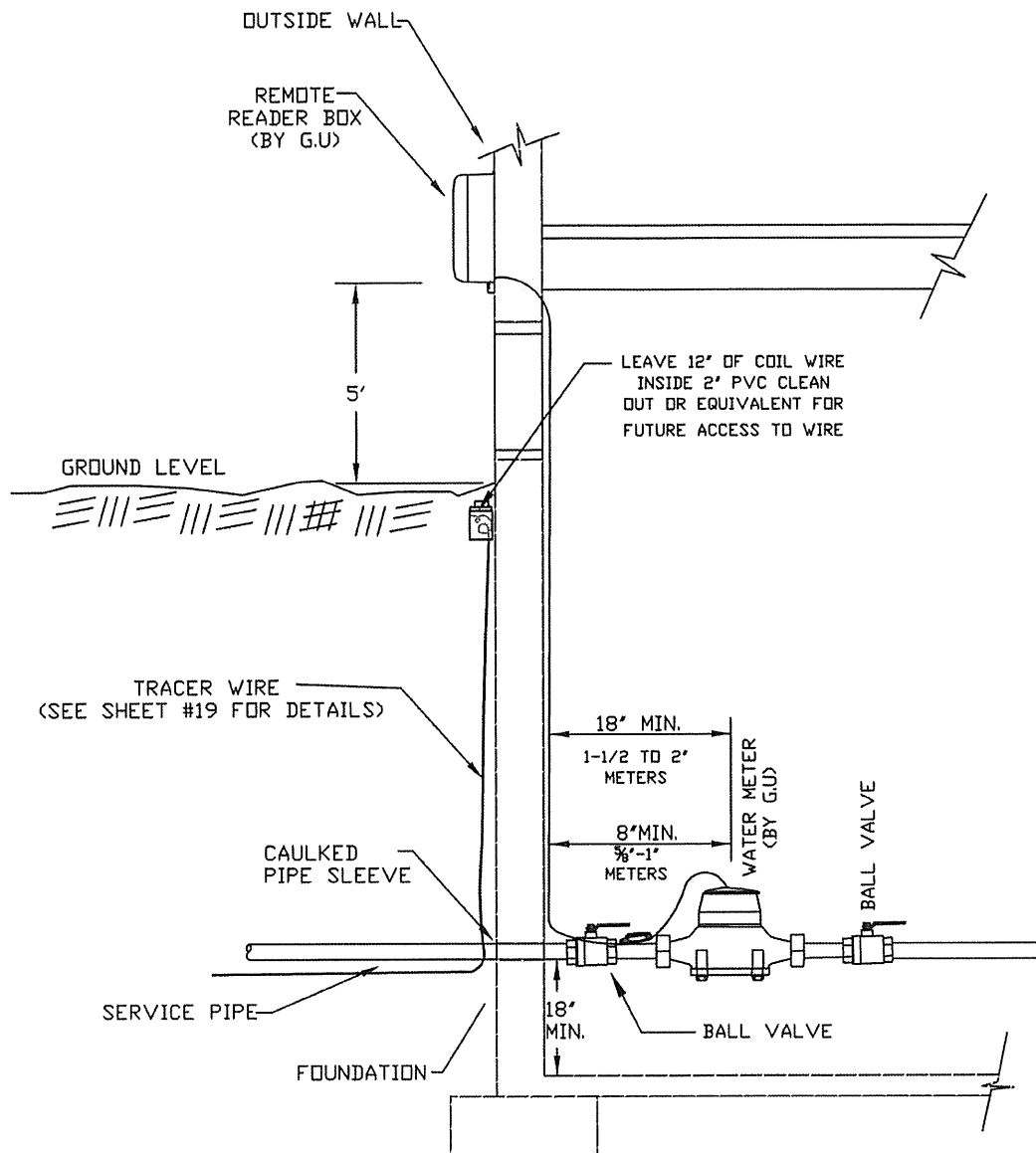


1. MINIMUM SIZE OF ANY WATER SERVICE INSTALLED FROM MAIN TO PROPERTY LINE SHALL BE 1".
2. TYPE "K" COPPER TUBING MUST BE INSTALLED FROM MAIN TO PROPERTY LINE.
TYPE "K" COPPER TUBING OR CLASS 200 PLASTIC TUBING MUST BE INSTALLED FROM PROPERTY LINE TO BUILDING.
3. METER PIT MAY REPLACE CURB STOP, BOX, AND HOUSE METER IN BASEMENT.
4. ALL JOINTS TO METER SHALL BE FLARED OR COMPRESSION TYPE.
5. BUILDINGS WITHOUT BASEMENTS MUST HAVE EXTERIOR METER PITS.
6. SERVICE LINES MUST BE CAULKED INSIDE FOUNDATION WALL SLEEVE.
7. BACKFILL: HAND-FILL WITH SAND OR EQUAL TO 12" ABOVE PIPE.
8. TAPPED COLLARS MAY BE USED FOR SERVICE CONNECTIONS.
9. ELECTRICAL GROUNDING WILL NOT BE PERMITTED ON ANY PORTION OF AN EXISTING COPPER WATER SERVICE PARTIALLY REPLACED BY PLASTIC PIPE.

* Pipe rating shall be class 200 water service pipe manufactured to meet or exceed requirements of water service tubing Class 200 (ASTM Standard D-2737 CTS-OD). The pipe shall bear the emblem of National Sanitation Foundation for use in potable water systems. Class 200 water service pipe must be approved by I.A.P.M.D. for use as underground water service pipe and shall bear the seal of the Uniform Plumbing Code. The pipe must conform to the National Bureau of Standards Product Standard Requirements.

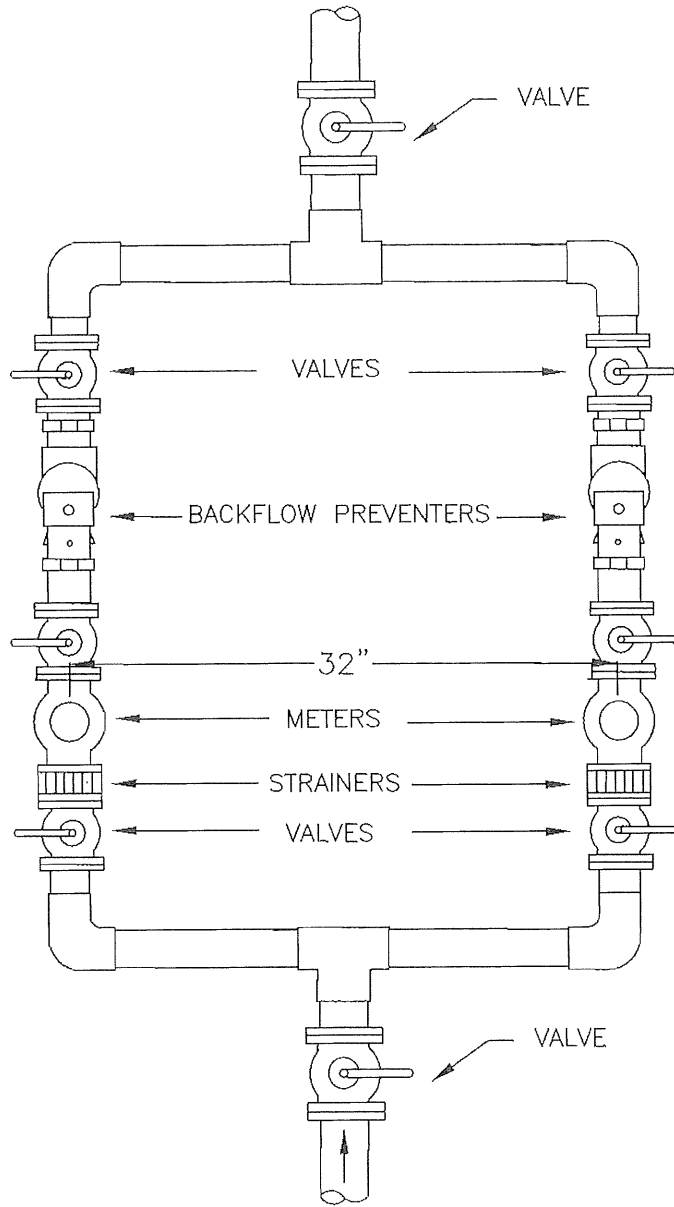
*(CTS-OD Indicates Copper Tubing Size, Outside Diameter)

APPROVED	DATE	STANDARDS TYPICAL WATER SERVICE CONNECTION 1"	BY D.L.C.	CHECKED
			REVISED M.E.D	CHECKED
			DATE	4/9/20
				11



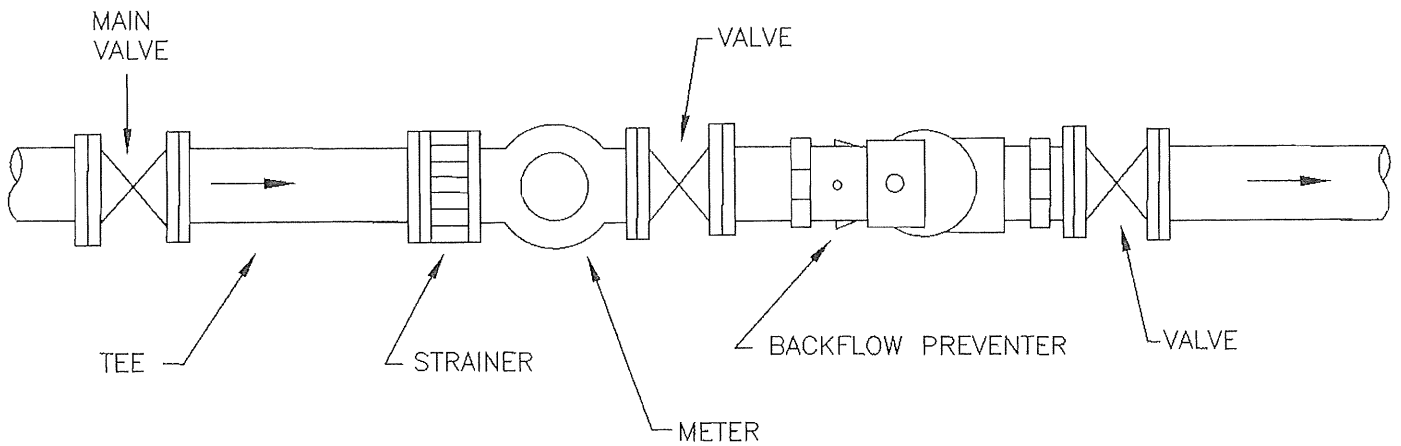
- NOTES:
1. ALL METER TO BE INSTALLED A MINIMUM OF 18" ABOVE THE FLOOR
 2. ALL 5/8" TO 1" METERS TO BE INSTALLED A MINIMUM OF 8" FROM THE WALL TO THE CENTERLINE OF THE METER.
 3. ALL 1 1/2" TO 2" METERS TO BE INSTALLED A MINIMUM OF 18" FROM THE WALL TO CENTERLINE OF THE METER OR AS REQUIRED.
 4. CAULK AND SEAL ANY DRILL HOLES NEATLY AND THOROUGHLY.
 5. WIRE MUST BE RUN FROM THE METER TO EITHER SIDE OF FRONT OUTSIDE WALL. IF POSSIBLE LOCATE NEAR ELECTRIC METER AND IN AN ACCESSIBLE AREA.
 6. INSTALL WIRE IN A NEAT ORDERLY METHOD IN ACCORDANCE WITH THE OWNERS REQUEST.

APPROVED	DATE	STANDARDS TYPICAL RESIDENTIAL WATER METER INSTALLATION NOT TO SCALE	BY M.S.W. CHECKED
			REVISED M.E.D CHECKED
			DATE 10/29/20
			12



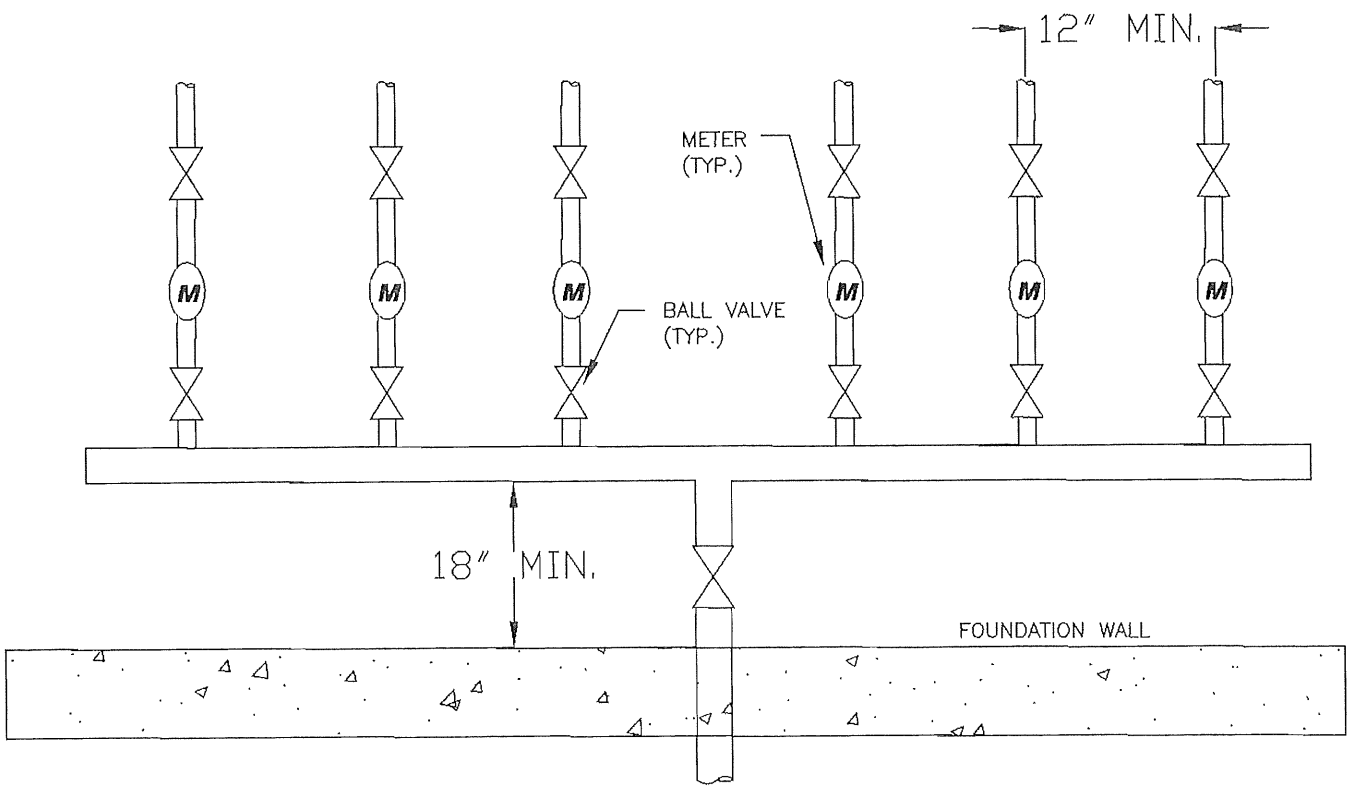
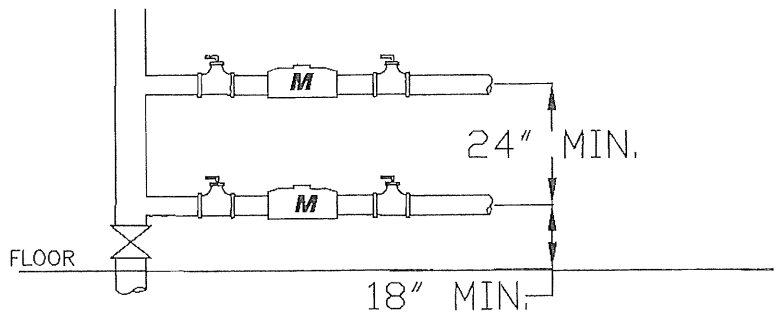
1. ALL PIPING AND FLANGED FITTINGS TO BE SUPPLIED BY CUSTOMER
2. REDUCED PRESSURE PRINCIPLE BACKFLOW PREVENTER FOR SIZES 3/4" THRU 6" WITH BY-PASS PIPING.
3. CENTER OF PIPE TO FLOOR 42"
4. CENTER OF PIPE TO WALL 18"

APPROVED	DATE	STANDARDS TYPICAL BACKFLOW PREVENTER INSTALLATION 3/4" THRU 6" WITH BY-PASS PIPING NOT TO SCALE	BY	MSW	CHECKED
R.A.R.	5/21/99		REVISED	5/6/99	CHECKED
			DATE	8/21/87	
			13		



1. ALL PIPING AND FLANGED FITTINGS TO BE SUPPLIED BY CUSTOMER
2. REDUCED PRESSURE PRINCIPLE BACKFLOW PREVENTER FOR SIZES 3/4" THRU 2" FOR INSTALLATIONS NOT REQUIRING BY-PASS PIPING.
3. CENTER OF PIPE TO FLOOR 24"
4. CENTER OF PIPE TO WALL 18"

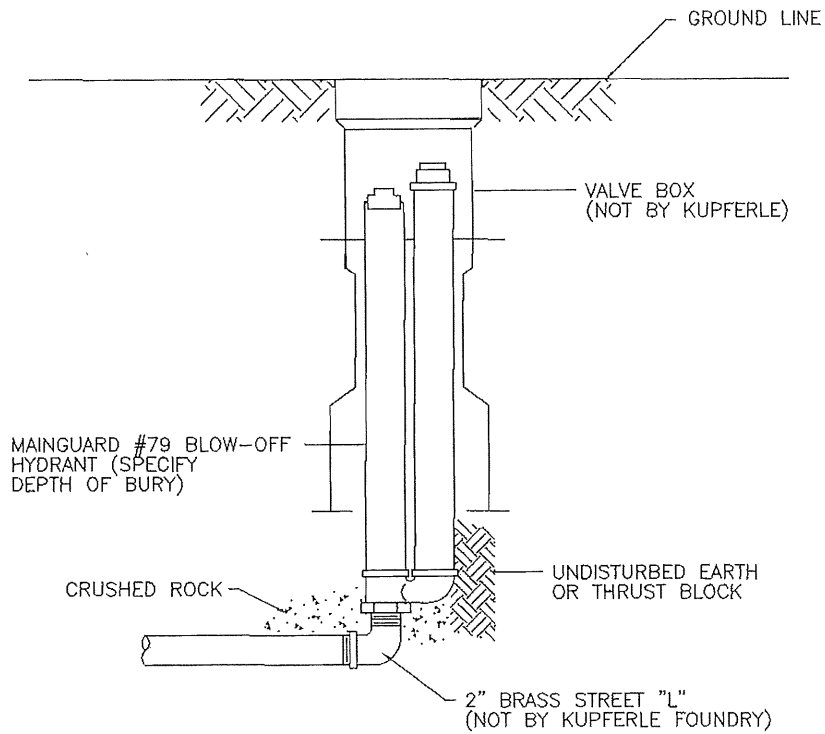
APPROVED	DATE	STANDARDS TYPICAL BACKFLOW PREVENTER INSTALLATION 3/4" THRU 2" WITHOUT BY-PASS PIPING NOT TO SCALE	BY MSW	CHECKED
R.A.R.	5/21/99		REVISED 5/6/99	CHECKED
			DATE 8/21/87	
				13A



1. ALL VALVES TO BE FULL FLOW BALL VALVES.
2. ALL METERS TO BE INSTALLED HORIZONTALLY.
3. EACH METER AND SERVICE PIPE TO BE NUMBERED WITH THE CORRESPONDING CONDO NUMBER, AS WELL AS THE REMOTE READ BOX ON THE OUTSIDE OF THE BUILDING.
4. THE METERS ARE TO BE INSTALLED AS CLOSE AS POSSIBLE TO THE POINT OF ENTRY OF THE SERVICE PIPE INTO THE BUILDING. ANY VARIATION MUST BE APPROVED BY THE DEPARTMENT OF UTILITIES.

APPROVED	DATE	STANDARDS TYPICAL MULTIPLE METER INSTALLATION	BY D.L.C.	CHECKED
			REVISED	CHECKED
			DATE	1/8/01
			14	

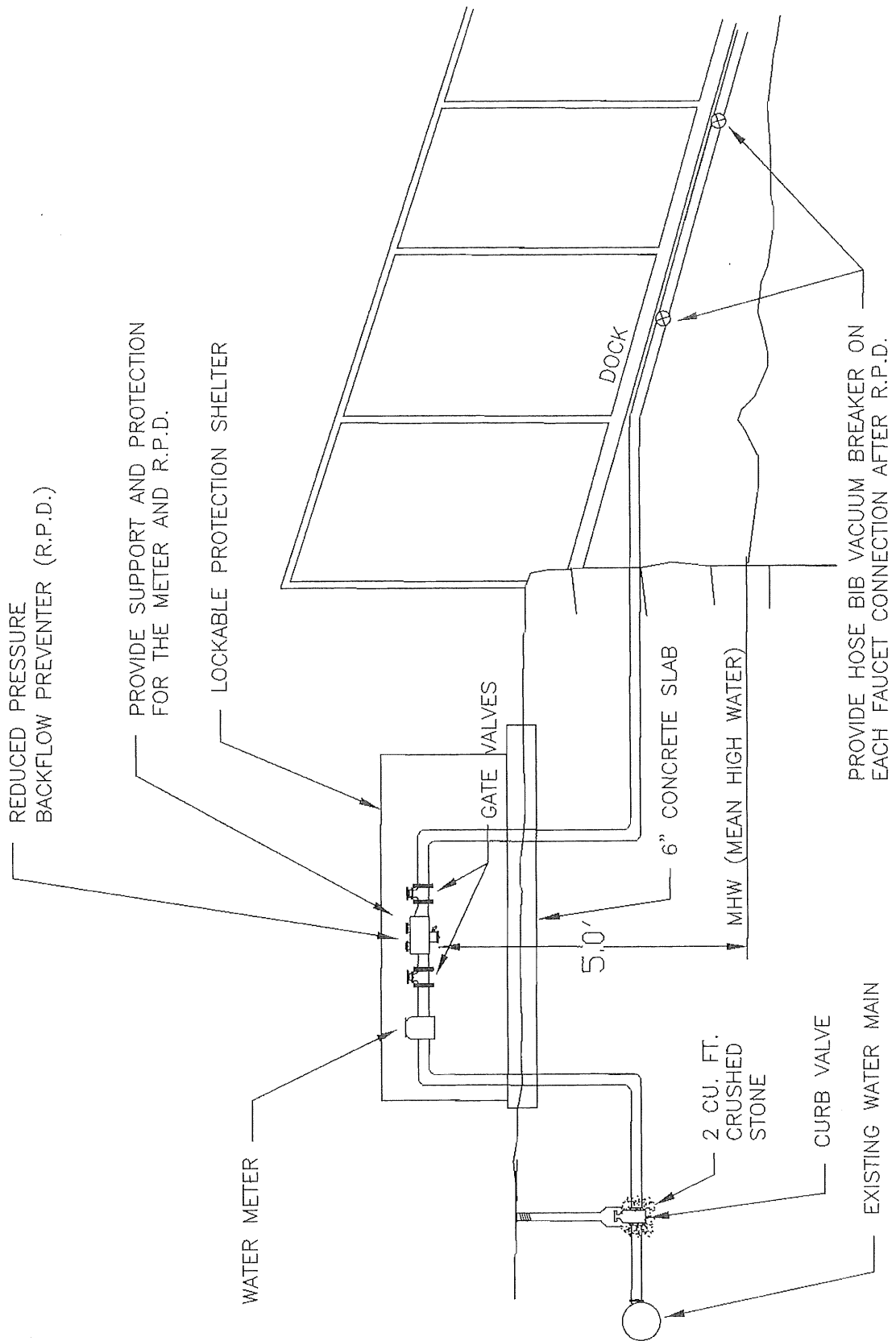
ECLIPSE NO. 79 (MAINGUARD) BLOW-OFF HYDRANT



Blow-Off Hydrants shall be non-freezing, self draining type. Set underground in a 5 1/4" valve box, these hydrants will be furnished with a 2" FIP inlet, a non-turning operating rod, and shall open to the left. All of these working parts shall be of bronze-to-bronze design, and be servicable from above grade with no digging. The outlet shall be a 2" FIP coupling with plug, as manufactured by Kupferle Foundry Co., St. Louis, MO, or approved equal.

(Specify overall length 6" shorter than normal depth of bury.)

APPROVED	DATE	STANDARDS 2" MANUAL AIR RELEASE	BY D.L.C.	CHECKED
			REVISED	CHECKED
			DATE	1/9/01
			15	

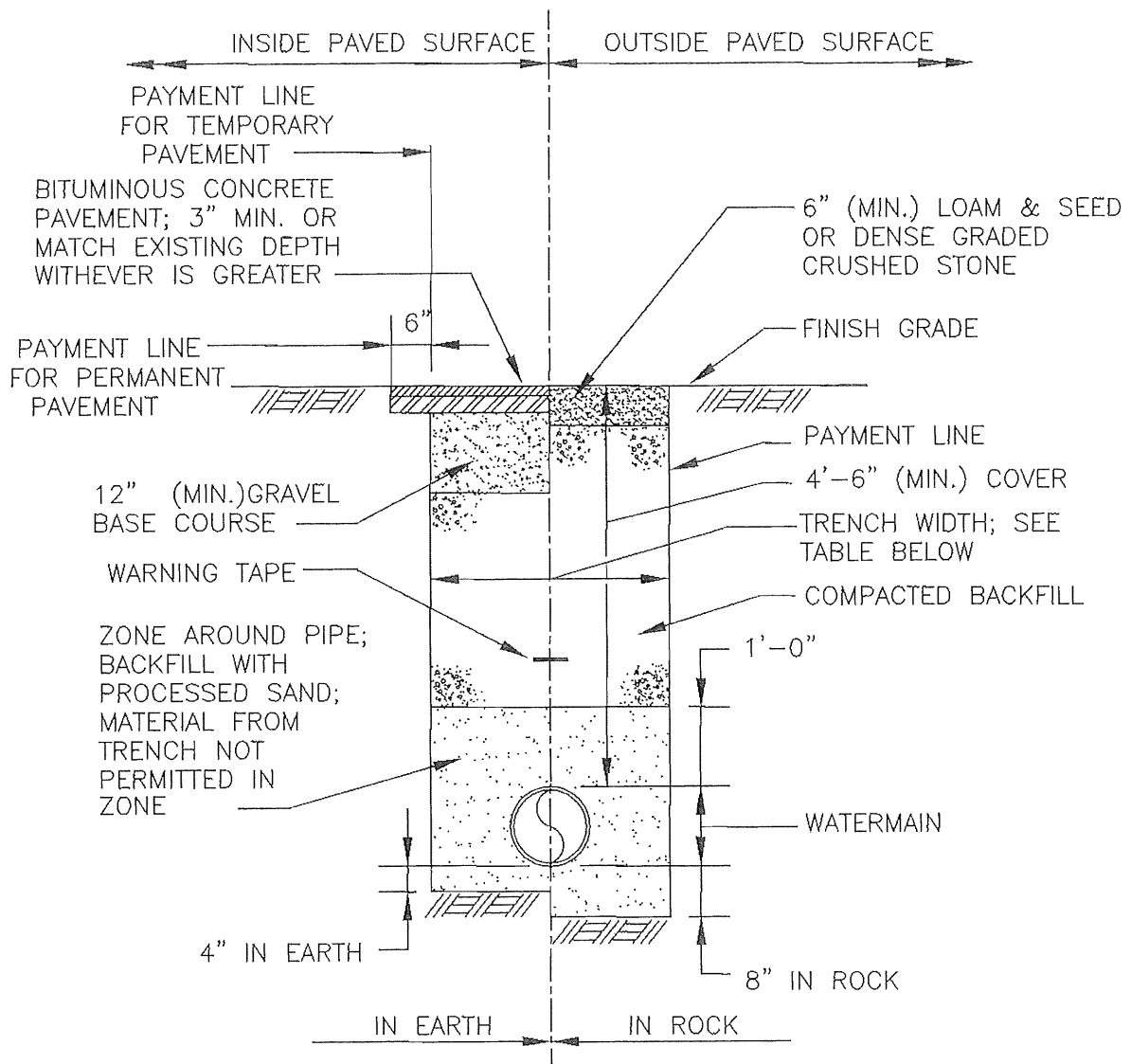


APPROVED	DATE

STANDARDS

TYPICAL
BACKFLOW PREVENTER INSTALLATION
FOR MARINE FACILITIES

BY D.E.I.	CHECKED
REVISED	CHECKED
DATE 10/9/87	



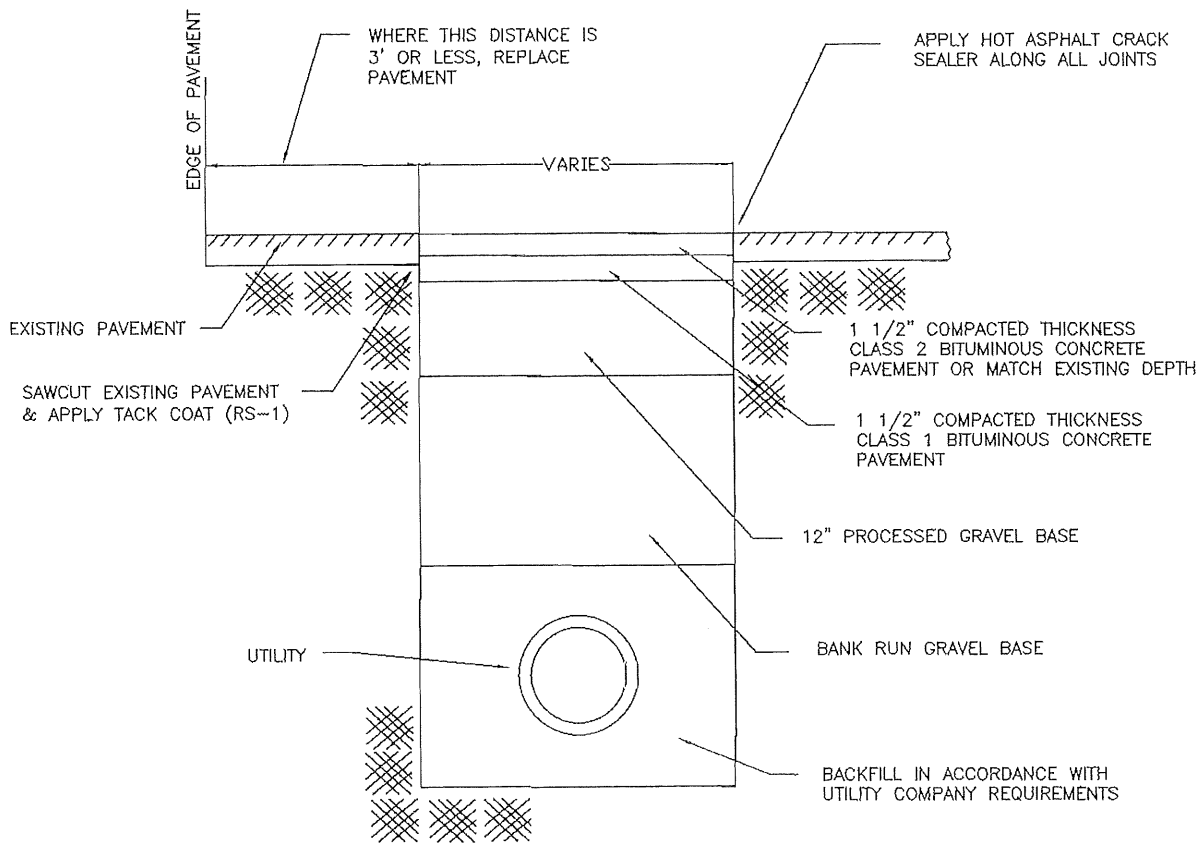
TRENCH WIDTH TABLE		
PIPE DIA.	12" & UNDER	16"
TRENCH WIDTH	3'-0"	3'-4"

NOTE: PAYMENT FOR PAVEMENT INSTALLED BEYOND PAYMENT LINE WILL BE MADE ONLY WHEN SUCH INSTALLATION IS APPROVED BY THE ENGINEER.

WATERMAIN TRENCH DETAIL

NOT TO SCALE

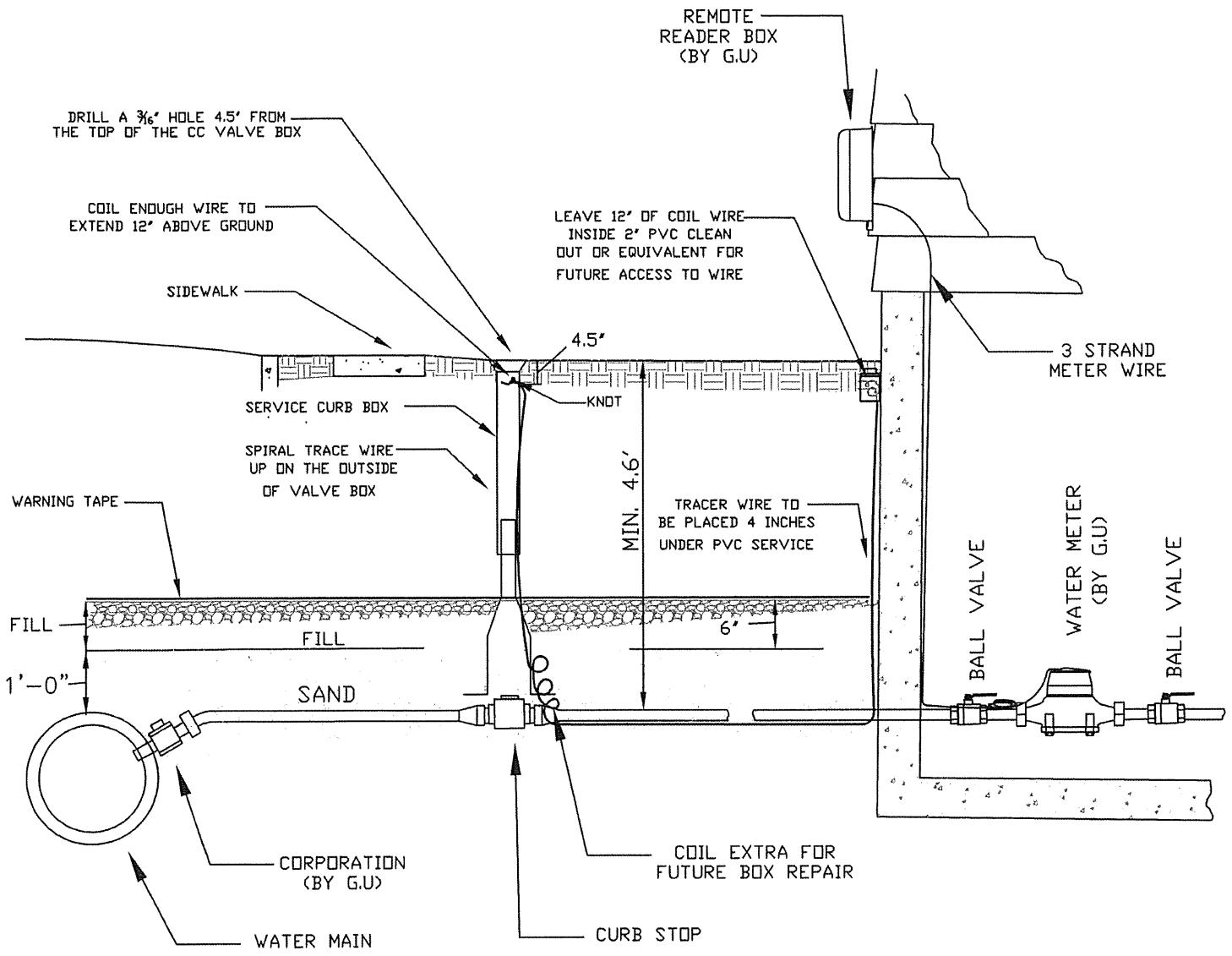
APPROVED	DATE	STANDARDS TYPICAL TRENCH DETAIL	BY D.L.C.	CHECKED
			REVISED	CHECKED
			DATE	1/8/01
			17	



UTILITY TRENCH PATCH

NOT TO SCALE

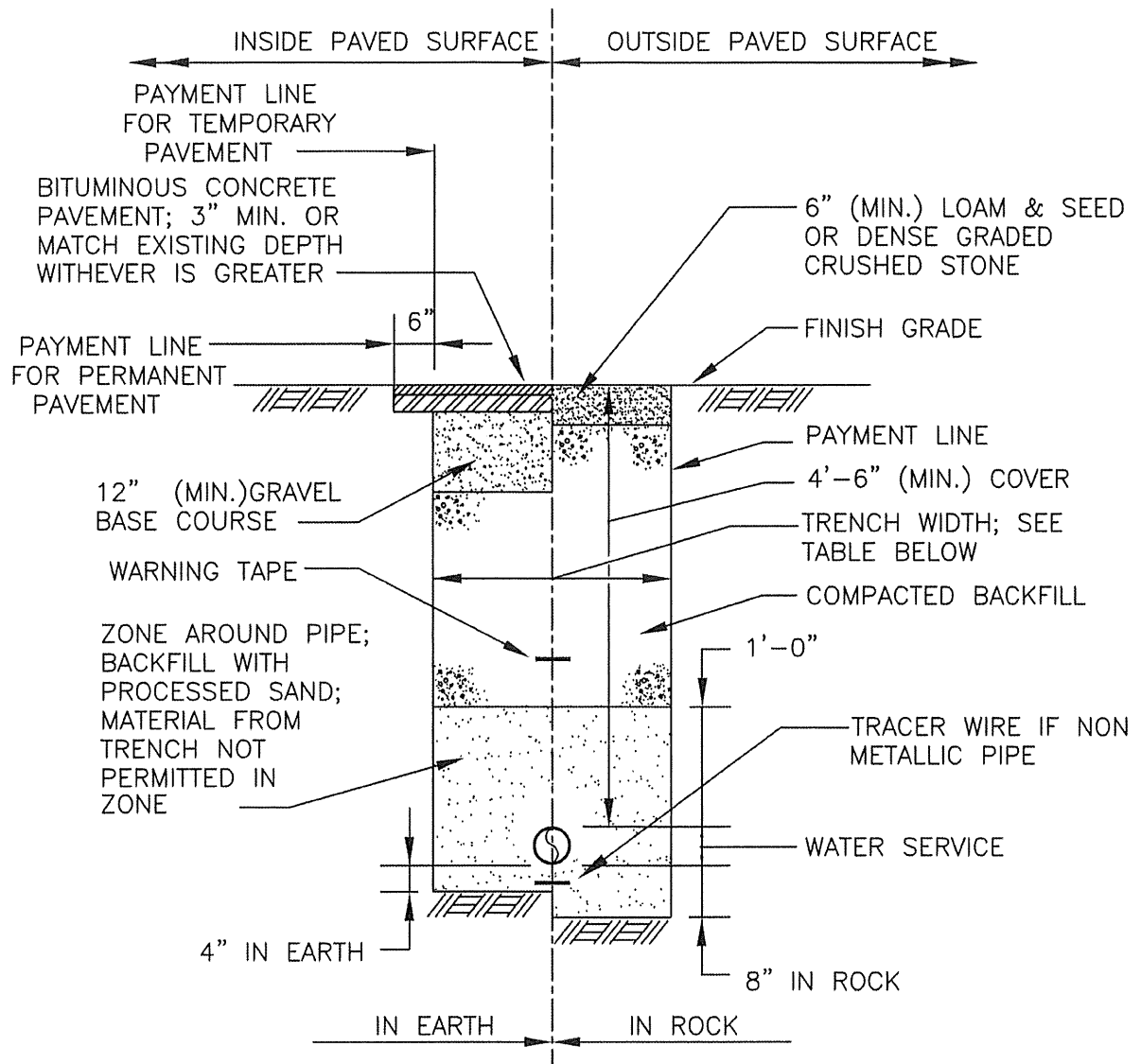
APPROVED	DATE	STANDARDS TYPICAL PAVEMENT REPLACEMENT	BY D.L.C.	CHECKED
			REVISED	CHECKED
			DATE	1/8/01
				18



TYPE K COPPER TUBING WATER SERVICE CLASS 200 (ASTM D-2737 CTS-OD) PVC PIPE

*TRACE WIRE DIRECT BURIAL #12 AWG SOLID (0.0808" DIAMETER), STEEL CORE SOFT DRAWN TRACER WIRE, 250# AVERAGE TENSILE BREAK LOAD, 30 MIL HIGH MOLECULAR- HIGH DENSITY POLYETHYLENE JACKET COMPLYING WITH ASTM-D-1248, 30 VOLT RATING.

APPROVED	DATE	STANDARDS TYPICAL TRACER WIRE DETAIL (WITHIN G.U SERVICE AREA)	BY M.E.D	CHECKED
			REVISED	CHECKED
			DATE	10/29/20
			19	



TRENCH WIDTH TABLE	
PIPE DIA.	2" & UNDER
TRENCH WIDTH	3'-0"

NOTE: PAYMENT FOR PAVEMENT INSTALLED BEYOND PAYMENT LINE WILL BE MADE ONLY WHEN SUCH INSTALLATION IS APPROVED BY THE ENGINEER.

WATER SERVICE TRENCH DETAIL

NOT TO SCALE

APPROVED	DATE	STANDARDS TYPICAL TRENCH DETAIL	BY M.E.D	CHECKED
			REVISED	CHECKED
			DATE	10/29/2020
			20	