

IF YOU CAN
PLAY ON IT,



WE CAN
BUILD IT

Durability • Reliability
Playability • Engineered to Last



Tennis Industry Magazine Contractor of the Year —
10 and Under Tennis (2011)



Hinding Tennis Courts, LLC • 24 Spring Street • West Haven, CT 06516 • p 203-285-3055

Jan 10, 2024

Town of Ledyard
Accounts Payable, 741 Colonel Ledyard Highway, Ledyard, CT, 06339
scott@ledyardrec.org
860-705-2123

RE: Construction of to Pickleball courts 64' x 68' at Gales Ferry Community Center.
18 Hurlbutt Rd. Gales Ferry CT.

Dear Scott Johnson,

Thank you for considering Hinding Tennis for your recreational needs. It is our goal to provide you with the highest quality sport surfacing products and installation in the industry.

We at Hinding Tennis stand committed to excellence and it is our goal to provide you with the highest quality materials. As a current member of the American Sports Builders Association we are always up to date on the newest innovations and industry trends. Our goal is always to exceed your expectations and let the finished product speak for itself.

We know you have many options when choosing a sport-surfacing contractor, therefore we continually strive to provide the most competitive pricing without compromising the quality or workmanship.

All of us at Hinding Tennis thank you for the opportunity to provide you with this proposal and look forward to working with you in the future.

Sincerely,

Vincent Rapuano
vin@hindingtennis.com



HINDING PROPOSAL

PROCEDURE TO BE AS FOLLOWS:

Furnish all materials, labor and insurance to perform the Construction of to Pickleball courts 64 x 68.

Court layout, engineer, plans, tree, removal, permits, drainage, are not included in this proposal.

Specifications of Services to be Provided:

Material	Qty
Site Work: Excavate 8-12 Inches of existing material and furnish material to establish substrate	1
Net Post Footings: Install new pickleball net post footings including new net and posts	2
Fence: 6' Foot Fencing: Furnish and install 6' high black chain-link fence	264
Paving: Furnish and install two asphalt lifts 1 1/2" each lift for a total of 3" compacted to 2 1/2". Let cure for 21 days	4352
Color Coating: Furnish and install the (3) coat acrylic color coating surface system to entire area. The Hinding surfacing system consists of two distinct components, 1 Filler Coat and 1 Finish Coat.	1
Line Stripe: Layout and Line Stripe two Pickleball Courts.	2
Mobilization and fuel surcharge: Mobilize the necessary equipment to perform the required work for your project as itemized below. This fee is associated with the work that is necessary to set up your job and organize the necessary equipment that is needed to load and mobilize to and from the job site each day.	1

Pricing as Indicated Below:

Total: \$83,819.35

www.HindingTennis.com



PAYMENT SCHEDULE

SALES TAX WILL BE CHARGED AT 30% OF THE STATE TAX RATE WHEN APPLICABLE TO ACCOUNT FOR TAX ON LABOR. PAYMENT IS EXPECTED UPON TIMELY COMPLETION.

CREDIT CARD PAYMENTS WILL REQUIRE A 2% CREDIT CARD PROCESSING FEE.

Payment Schedule is to be as follows **unless otherwise specified on the contract:**

For jobs priced below a threshold of approximately \$3,000.00 (subject to vary):

100% "Full payment", plus applicable tax on total amount, due upon signing and remittance of forthcoming contract if this estimate is approved, before work can begin. Please be ready to include a payment along with a signed contract.

For jobs priced above a threshold of approximately \$3,000.00 (subject to vary):

50% "Down payment", plus applicable tax on total amount, due upon signing and remittance of forthcoming contract if this estimate is approved, before work can begin. Please be ready to include a payment along with a signed contract.

20% "Good faith payment", considered due the day we begin work on your project.

30% "Remainder payment", considered due the day we end work on your project.

PLEASE NOTE: In the event that payment is not made as specified above, it is agreed that Hinding Tennis, LLC will receive interest at the prevailing wage rate unpaid balance, plus all the cost of collection, including a reasonable attorney's fee. In the event that payment is not made as specified, Hinding Tennis, LLC retains the right to halt works until past due payments are made. Above prices are submitted for approval within sixty days and after that time may be revised. We reserve the right to take before, during & after photos of your particular job & use photos for marketing purposes. We will never give out your name or street address without your consent.

ACCEPTANCE OF PROPOSAL: Please call the office (203-285-3055) or one of the owners directly if someone is not in touch with you shortly and you are intent on proceeding with the work as described. We will provide a contract for you to sign and remit with payment so that we may begin work.

www.HindingTennis.com



ABOUT US



"Over the years, Hinding Tennis has helped make GRSC a community club with the best hard court surfaces inside and out, as well as junior lines and stand alone courts, outdoor lighting and pickleball courts. They are a great partner in the tennis business."

— Sarah Boone, Owner, Guilford Racquet & Swim Club



Since **1994** the Team at Hinding Tennis, LLC has been building superior Recreational Courts for all types of surfaces. We specialize in Post Tension Concrete Courts and our patented Rubberized Cushion System is a very popular surface among many avid players.

Hinding prides itself on quality workmanship and retains over 90% of its work force each season; our crews are extremely knowledgeable and are some of the most experienced in the business.

From Har Tru to Post Tension Concrete to Tennis and Basketball Courts to Playgrounds and just about anything recreational, we offer only the best products and services. We are actively involved in the ASBA (American Sports Builders Association) and we are constantly on the cutting edge of new technology.

Our reputation speaks for itself and clubs, residential, parks, schools and municipalities count on us everyday.

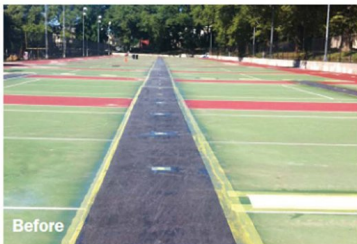
We can customize any job to any size, any color and any speed. Our customer service and sales representatives are extremely knowledgeable of all types of surfaces, coatings and building new courts. So please call us today for a free analysis of your project.



24 Spring Street • West Haven, CT 06516
203-285-3055 • HindingTennis.com

Official 10 and Under Tennis Court Installer

RITEWAY CRACK REPAIR



The RiteWay Crack Repair System (U.S. Patent No. 7,597,503) utilizes an exclusive technology that allows existing cracks on your court to move without breaking the membrane of this system. Many who have tried other systems have complained about “dead spots,” “hollow sounds” and “bubbling.” Although these other systems have proven to keep cracks from coming back, RiteWay Crack Repair not only keeps cracks from coming back, but its exclusive technology does not have any dead spots, hollow sounds or bubbling.

The installation is so unique that many tennis court owners can't believe its proven success until they see it for themselves.

No other overlay system can give you the RiteWay results. We've seen the other systems on the market - some have success, some have failures - but none of them can give the guarantee that RiteWay offers. Our proven success and durability will last much longer than the written guarantee.

When considering your repair options, there's only one question to ask yourself:

Are you repairing cracks the old traditional way, or are you repairing them the RiteWay?



Fix Your Cracks - Do It The RiteWay!

For more information go to www.ritewaytennis.com.



24 Spring Street • West Haven, CT 06516

203-285-3055 • HindingTennis.com

Official 10 and Under Tennis Court Installer

RESURFACING



Court Resurfacing

Since 1994, Hinding Tennis has been building and resurfacing tennis courts throughout the United States and in the Caribbean. With headquarters located in West Haven, Connecticut, Hinding Tennis' major client concentration runs up and down the U.S. East Coast.

Resurfacing your tennis court is important in the overall maintenance, upkeep, playability and longevity of the court. Typically, a tennis court should be resurfaced every 4-7 years. This varies depending upon the surface, weather, amount of play, and preservation of the court. Hinding Tennis offers all types of coating and cushion systems and will give you several resurfacing options to keep your court performing at its highest level of playability.

Hinding Tennis resurfaces over 400 courts per year. We retain 90% of our professional workforce yearly, therefore we are not training new court technicians each season. Our quality of workmanship, professionalism and customer service is second to none. Examples of our projects include Chelsea Piers, Stamford CT; U.S. Coast Guard, New London CT; and Match Point Tennis, Brooklyn, NY.



24 Spring Street • West Haven, CT 06516
203-285-3055 • HindingTennis.com

Official 10 and Under Tennis Court Installer

SQUEEGEE MARKS



Acrylic color surfacing systems are generally applied with a squeegee in multiple coats. Most systems include one or more filler coats, followed by two to three coats of color. Some systems also include texture or cushion coats between the filler and the top coats.

There are several theories regarding the application of color coatings. In any case, coating systems must be applied smoothly to a uniform thickness over the entire court surface. This requires an experienced applicator and careful attention to the technique.

Even when color coatings are applied with care by a skilled operator, some squeegee marks and other slight variations in color and texture are inevitable. This is because the formulation of acrylic causes components to migrate to the edge of the material as it is being applied. As a result, an observer will be able to locate the spot where the acrylic material was poured on the surface, where the squeegee operator turned to make a pass in the opposite direction or where one pass overlapped another. Squeegee marks will be more visible on lighter colors and more common when coatings are applied in hot weather or when they include coarser sand. Humidity, angle of the sun when the acrylic is applied and other factors also may affect frequency and visibility of these marks.

Due to the nature of the material and the human element in tennis court construction, squeegee marks are likely to occur, like marks in newly vacuumed plush carpet or newly mown grass. They will not affect play and will become less visible as the court wears and ages.

While squeegee marks are within industry standard, more serious flaws – ridges, drips, tool marks, foot prints, bucket marks and areas of excess material - are unacceptable and should be corrected by the surfacing contractor.

Differences in site, weather and soil conditions require variations in construction and repair methods and materials. Readers are advised to consult a qualified contractor or design professional before undertaking construction or repair of a court. Rev. 03/04



24 Spring Street • West Haven, CT 06516
203-285-3055 • HindingTennis.com

Official 10 and Under Tennis Court Installer

BIRDBATHS

LOW SPOTS



“Birdbath” is a term commonly used in the tennis industry to describe a low area on a tennis court that holds water.

More precisely, the American Sports Builders Association (ASBA) defines a birdbath as any area where standing water more than 1/16" (2mm – commonly measured using a nickel) remains after drainage of the area has ceased or after one hour of drying at 70 degrees Fahrenheit in sunlight. Birdbaths delay play on the court after rain and may cause staining and/or peeling of the surface.

Among the causes of birdbaths are:

1. Unsuitable material in the subsoil;
2. Inadequate drainage around the tennis court;
3. Improper slope or grade;
4. Inadequate compaction of the subgrade; or
5. Paving error



Paving and surfacing, even with laser-guided equipment, involves both skill and judgment. The number of variables impacting the paving and surfacing processes makes it unreasonable to expect perfection. Minor depressions in the surface, those less than 1/16" deep or those that drain or dry in under an hour, are considered within tolerance and are acceptable. In a new or recently resurfaced court, however, the contractor should correct birdbaths.

Because site selection, design and construction can involve compromise, even properly designed and constructed courts may develop birdbaths over time. Tennis courts sometimes are built on sites which are reclaimed or which have been deemed unsuitable for other purposes. In such cases, less than ideal subsoil, grade, or drainage conditions may exist. Additionally, over time, new circumstances may arise which lead to settling or drainage problems.

The owner's expectations regarding repair of birdbaths should be based on the nature of the birdbaths that exist to be repaired and the amount of money budgeted for the repair. Owners also should understand that available repair methods and materials are imperfect. Complete removal of standing water may be impossible. Generally the owner should accept that repair of the birdbaths is only a means of reducing the inconvenience they cause and extending the useful life of the court.

The number, size and depth of birdbaths is another consideration. The existence of multiple birdbaths or major depressions of 1/2" or more may indicate more serious problems. Repairing multiple or deeper birdbaths is labor intensive and often results in cosmetic imperfections, which may require resurfacing to correct. The larger the birdbath, the more difficult it can be to repair.

Differences in site, weather and soil conditions require variations in construction and repair methods and materials. Readers are advised to consult a qualified contractor or design professional before undertaking construction or repair of a court. Rev. 11/10



24 Spring Street • West Haven, CT 06516
203-285-3055 • HindingTennis.com

Official 10 and Under Tennis Court Installer

ACCESSORIES



Hinding Tennis is your resource for court equipment and accessories. With close to 20 years of experience in court construction and maintenance, we know what you need to give your game a boost and keep your court in shape. We work with the best suppliers of quality court products. Quality products come from quality manufacturers and we can provide you with a variety of choices to meet your personal preferences.



Fencing, lighting and windscreens, tennis nets, tennis posts and benches. Backboards, score boards, goals, ball machines, roll dries and court brooms – we've got you covered. Looking for something? Just ask.



24 Spring Street • West Haven, CT 06516
203-285-3055 • HindingTennis.com

Official 10 and Under Tennis Court Installer

MAINTENANCE



Maintaining your court is one of the most important things you can do to preserve the longevity of its appearance. Like changing the oil in your car every 3,000 miles, properly cleaning and inspecting your court once a year is very critical.

To maximize the useful life of any type of court, we recommend that owners develop and implement a regular schedule of maintenance. Regular inspection and repair of minor irregularities is more cost effective than allowing the court to deteriorate to the point of requiring major repairs.

Our maintenance programs include servicing both All Weather and Har Tru Courts. For all weather courts, we recommend you pressure wash once a year, check for cracks, grease net post cranks, check mesh and tighten fence and install your net. Our Har Tru reconditioning includes removing all the dead material. Installing new Har Tru, grooming court, checking fence fabric and tightening, greasing net post cranks and installing your net.



Call us today to inspect your court and for a free non-obligational estimate.



24 Spring Street • West Haven, CT 06516
203-285-3055 • HindingTennis.com

Official 10 and Under Tennis Court Installer

**No Matter
What Your Game,**



**HINDING
HANDLES IT**



Official 10 and Under Tennis Court Installer

24 Spring Street • West Haven, CT 06516
203-285-3055 • HindingTennis.com



Like us on Facebook