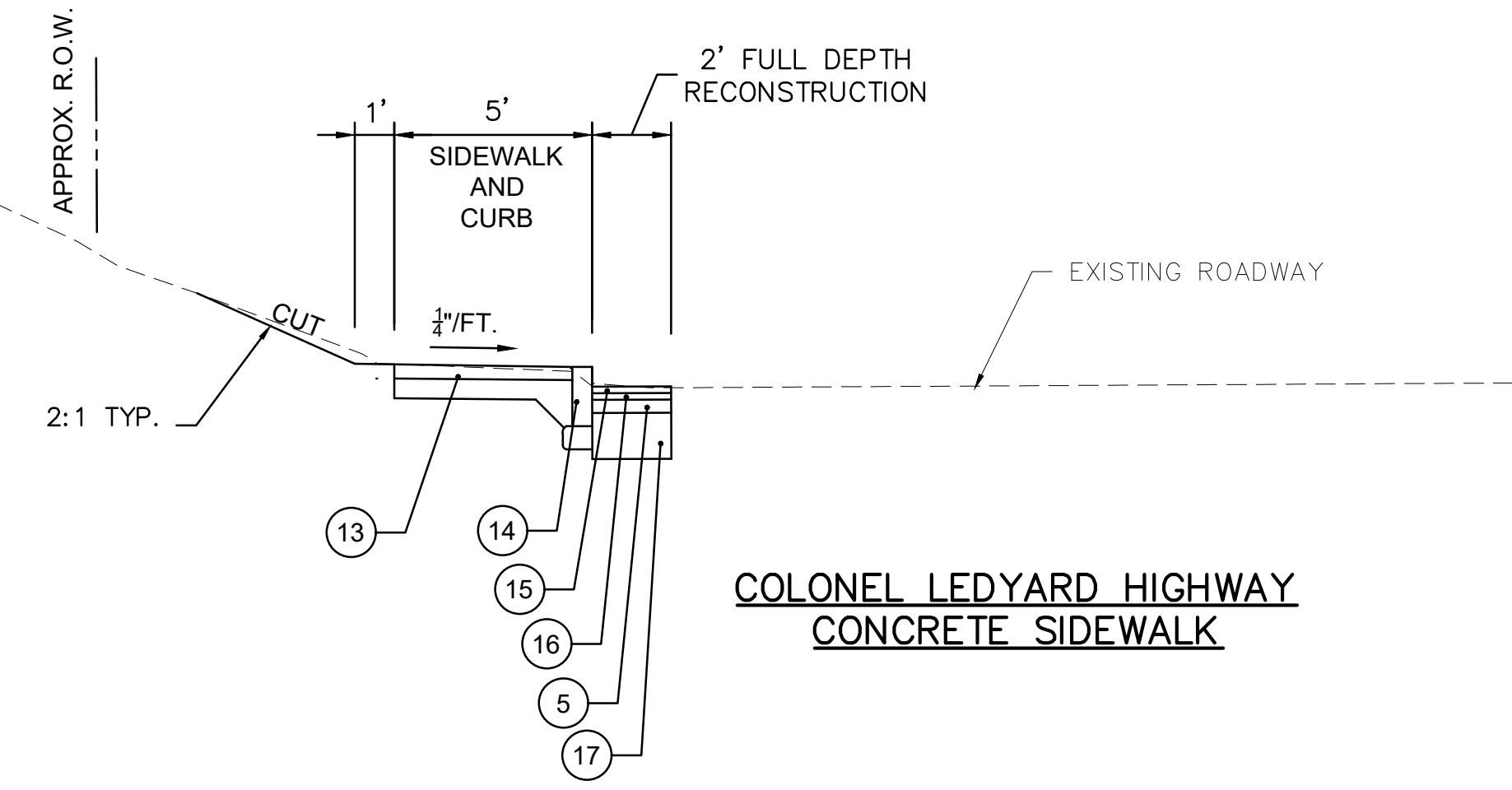
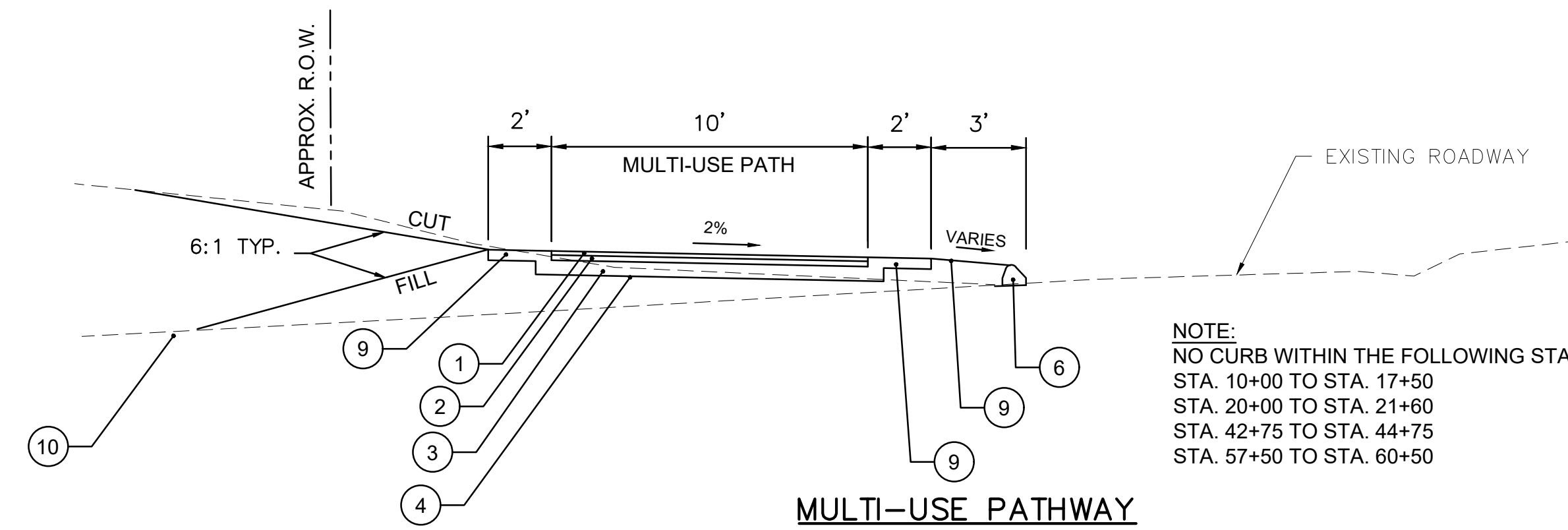


**COLONEL LEDYARD HIGHWAY - ROUTE 117
CONCRETE SIDEWALK**



**COLONEL LEDYARD HIGHWAY
CONCRETE SIDEWALK**

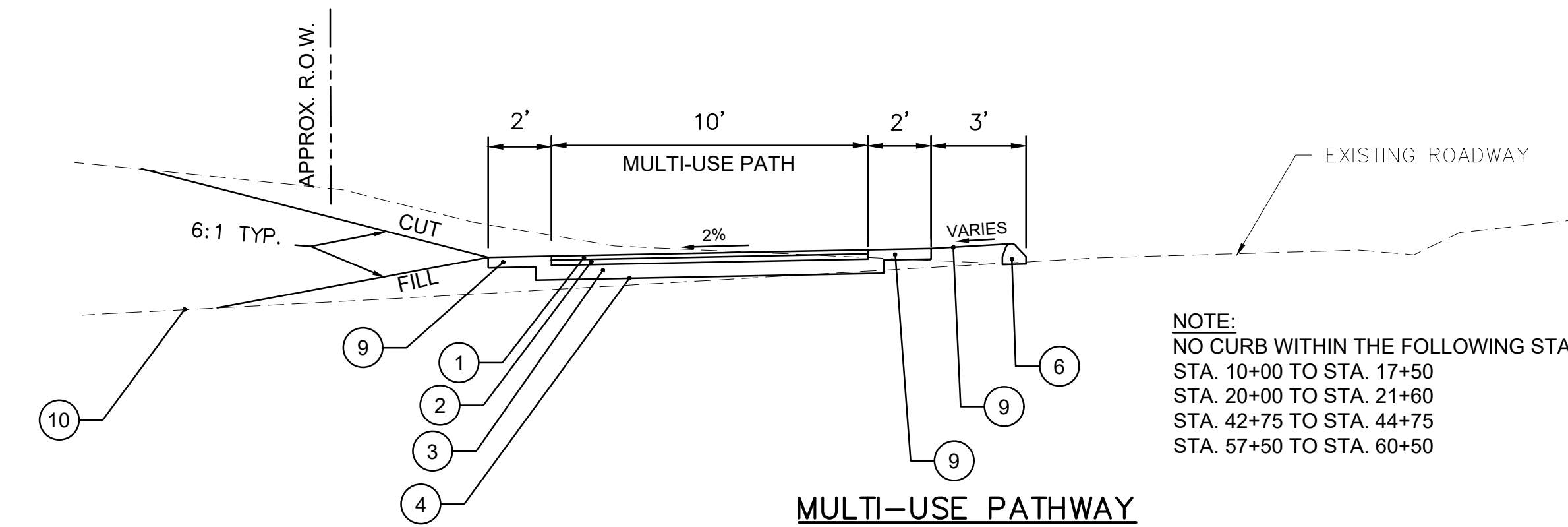
- START - STA. 11+00
- STA. 12+75 - STA. 13+25
- STA. 17+70 - STA. 20+00
- STA. 22+00 - STA. 24+50
- STA. 31+00 - STA. 31+80
- STA. 33+50 - STA. 37+50
- STA. 40+50 - STA. 42+00
- STA. 45+50 - STA. 47+50
- STA. 61+00 - END



MULTI-USE PATHWAY

NOTE:
NO CURB WITHIN THE FOLLOWING STATION RANGES -
STA. 10+00 TO STA. 17+50
STA. 20+00 TO STA. 21+80
STA. 42+75 TO STA. 44+75
STA. 57+50 TO STA. 60+50

- STA. 11+50 - STA. 12+50
- STA. 13+50 - STA. 17+50
- STA. 25+00 - STA. 30+50
- STA. 32+00 - STA. 33+20
- STA. 38+00 - STA. 40+00
- STA. 42+50 - STA. 45+00
- STA. 48+00 - STA. 51+65
- STA. 56+50 - STA. 60+50



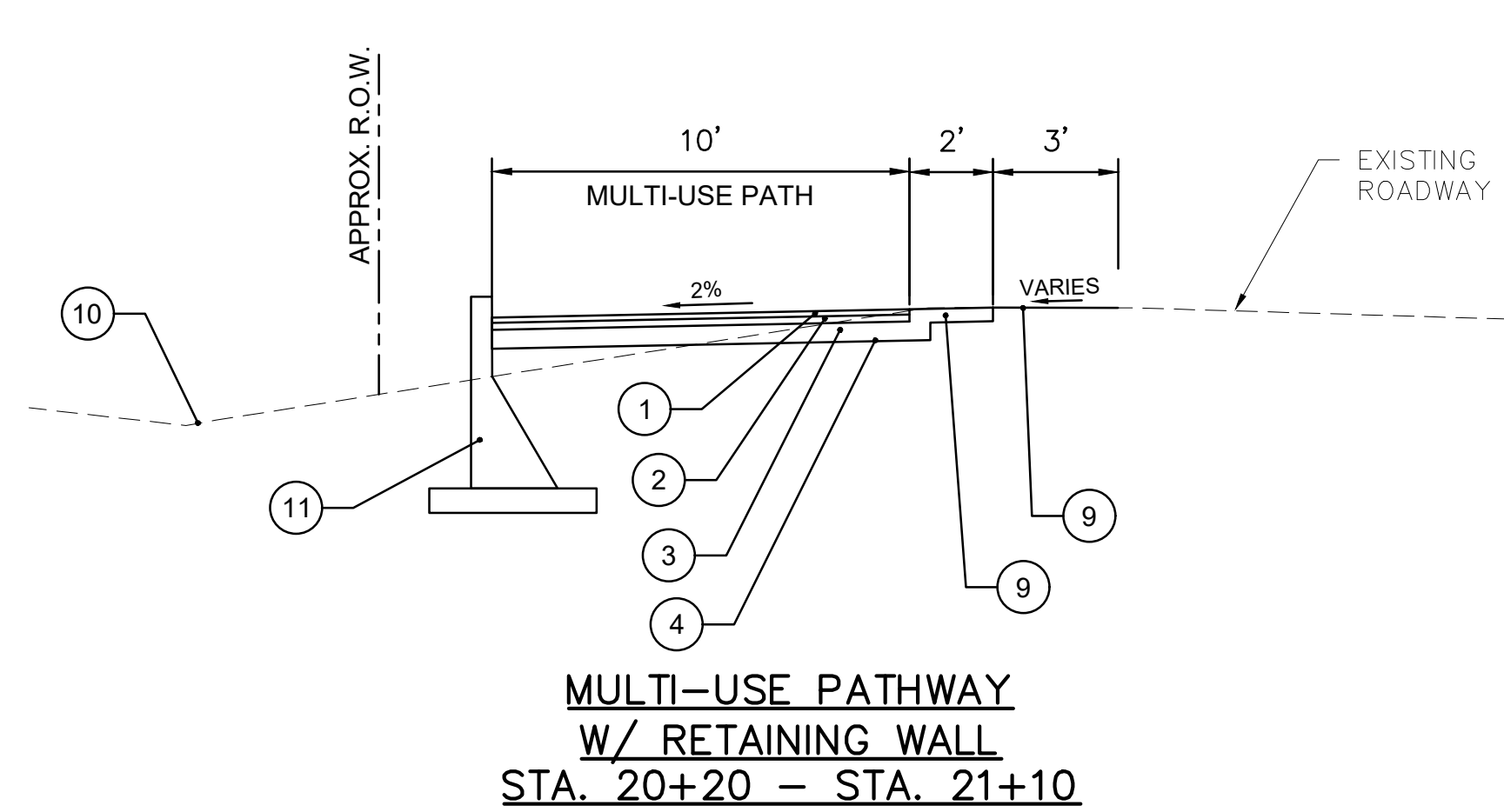
MULTI-USE PATHWAY

NOTE:
NO CURB WITHIN THE FOLLOWING STATION RANGES -
STA. 10+00 TO STA. 17+50
STA. 20+00 TO STA. 21+80
STA. 42+75 TO STA. 44+75
STA. 57+50 TO STA. 60+50

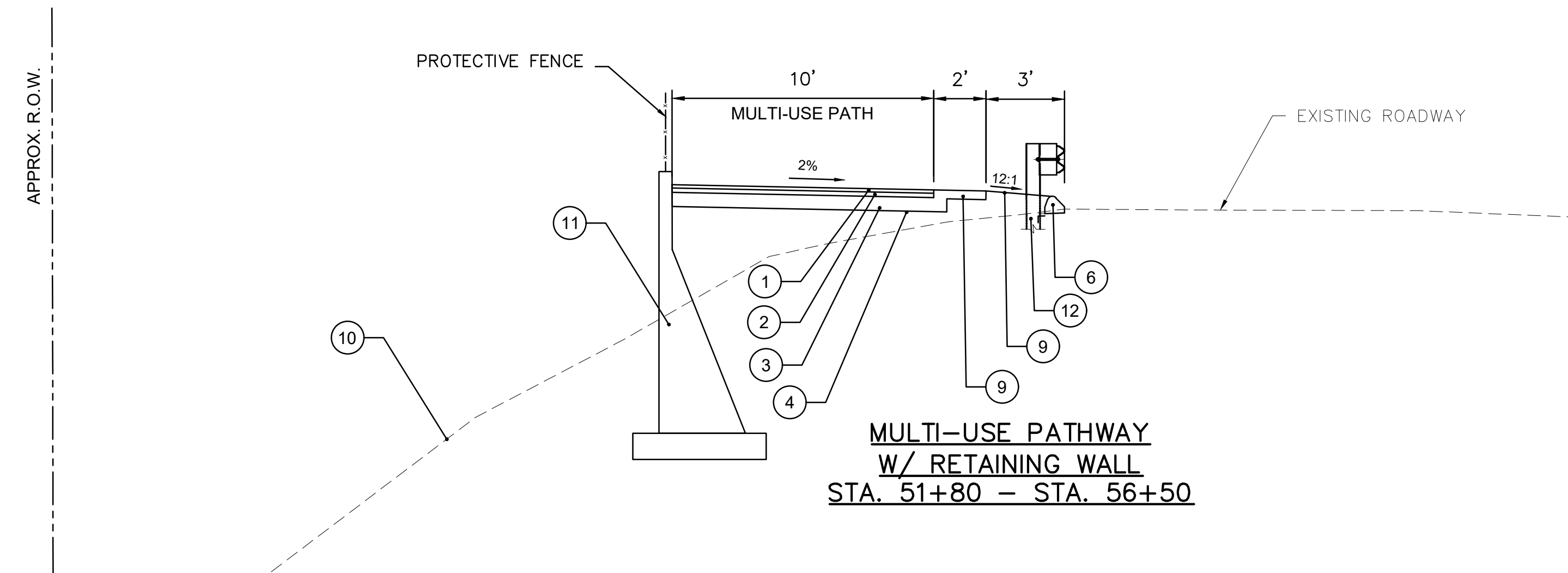
LEGEND

- ① - 1.5" HMA S0.375
- ② - 2" HMA S0.5
- ③ - 6" PROCESSED AGGREGATE BASE
- ④ - COMPACTED SUBGRADE
- ⑤ - 4" PROCESSED AGGREGATE BASE
- ⑥ - 6" BITUMINOUS CONCRETE LIP CURBING
- ⑦ - 6" CONCRETE CURBING
- ⑧ - CONCRETE SIDEWALK
- ⑨ - 4" TOPSOIL AND TURF ESTABLISHMENT
- ⑩ - EXISTING GRADE
- ⑪ - RETAINING WALL
- ⑫ - METAL BEAM RAIL (R-B MASH)
- ⑬ - CONCRETE SIDEWALK
- ⑭ - CONCRETE CURB
- ⑮ - 2" HMA S0.375
- ⑯ - 2" HMA S0.5
- ⑰ - 14" SUBBASE

- NOTES:**
1. ALL CUT OR FILL SLOPES TO BE 2:1 MAX, UNLESS OTHERWISE NOTED ON THE CROSS SECTIONS OR APPROVED BY THE ENGINEER
 2. CONTRACTOR TO TRANSITION CROSS SLOPE OF MULTI-USE PATHWAY AS NEEDED BETWEEN THE SPECIFIED STATION RANGES



**MULTI-USE PATHWAY
W/ RETAINING WALL
STA. 20+20 - STA. 21+10**



**MULTI-USE PATHWAY
W/ RETAINING WALL
STA. 51+80 - STA. 56+50**

TYPICAL SECTIONS

SCALE: 1"=4'



Project: TOWN OF LEDYARD, CT



LEDYARD HIGH SCHOOL
MULTI-USE PATHWAY &
SIDEWALK EXTENSION
L071-0001

741 COLONEL LEDYARD HIGHWAY
LEDYARD, CT 06339

Weston & Sampson

Weston & Sampson Engineers, Inc.
712 Brook Street, Suite 103
Rocky Hill, CT 06067
978.532.1900 800.SAMPSON
www.westonandsampson.com

Consultants:

Revisions:

No.	Date	Description

Seal:

COA: COPYRIGHT © 2021 BY WESTON & SAMPSON
THIS DRAWING HAS BEEN PREPARED FOR THE
EXCLUSIVE USE OF THE CLIENT & PROJECT NAME
LISTED ON THIS DRAWING ONLY.

REPRODUCTION, RELEASE OR UTILIZATION OF THE
DRAWING CONTENT BY OTHER CLIENTS / FIRMS AND
ON OTHER PROJECTS IS PROHIBITED BY LAW.

WESTON & SAMPSON RETAINS THE EXCLUSIVE USE
OF THE INTELLECTUAL PROPERTY CONTAINED
HEREIN.

Issued For:

Scale: AS NOTED

Date: MAY 2023

Drawn By: NSD

Reviewed By: RC

Approved By: MJJ

W&S Project No.: ENG20-1119

W&S File No.:

Drawing Title:

**MULTI-USE PATHWAY
AND SIDEWALK
TYPICAL SECTIONS**

Sheet Number:

TYP-01