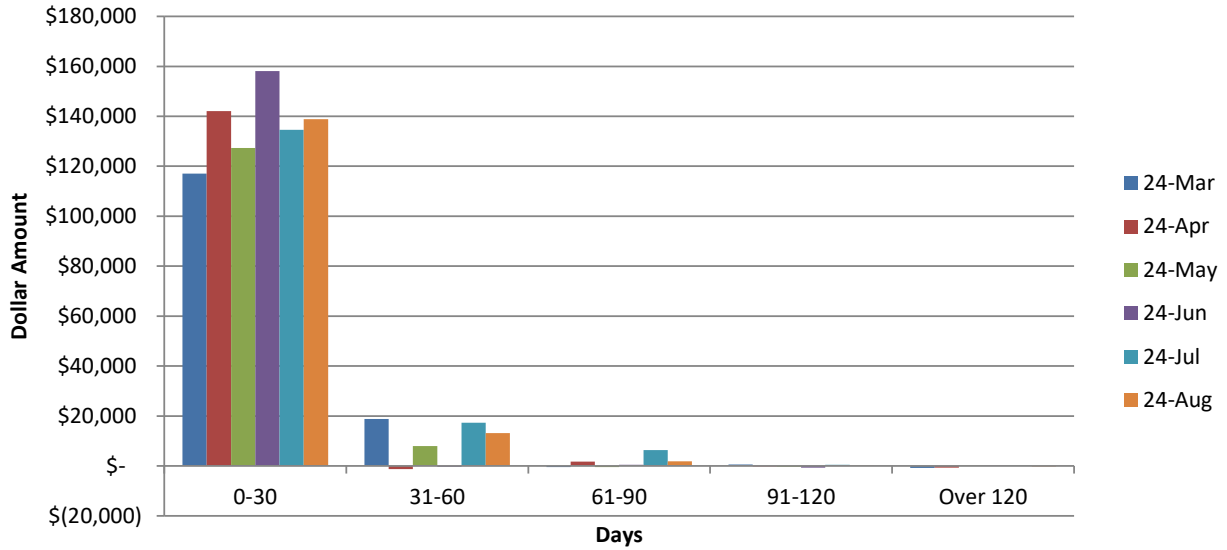


WPCA AGED A/R TRENDS MARCH 2024 - AUGUST 2024



MAR	MAR	MAR	MAR	MAR	
0-30	31-60	61-90	91-120	OVER 120	
\$ 117,081	\$ 18,806	\$ (451)	\$ 575	\$ (853)	\$ 135,158

APRIL	APRIL	APRIL	APRIL	APRIL	
0-30	31-60	61-90	91-120	OVER 120	
\$ 142,080	\$ (1,318)	\$ 1,708	\$ (198)	\$ (698)	\$ 141,575

MAY	MAY	MAY	MAY	MAY	
0-30	31-60	61-90	91-120	OVER 120	
\$ 127,347	\$ 8,013	\$ (425)	\$ (359)	\$ 42	\$ 134,618

JUNE	JUNE	JUNE	JUNE	JUNE	
0-30	31-60	61-90	91-120	OVER 120	
\$ 158,118	\$ (285)	\$ 433	\$ (689)	\$ 153	\$ 157,729

JULY	JULY	JULY	JULY	JULY	
0-30	31-60	61-90	91-120	OVER 120	
\$ 134,578	\$ 17,321	\$ 6,362	\$ 500	\$ 100	\$ 158,860

AUG	AUG	AUG	AUG	AUG	
0-30	31-60	61-90	91-120	OVER 120	
\$ 138,830	\$ 13,125	\$ 1,854	\$ 71	\$ (281)	\$ 153,599

Foot Notes:

Cash Collected in the month of August 2024: \$157,983.86