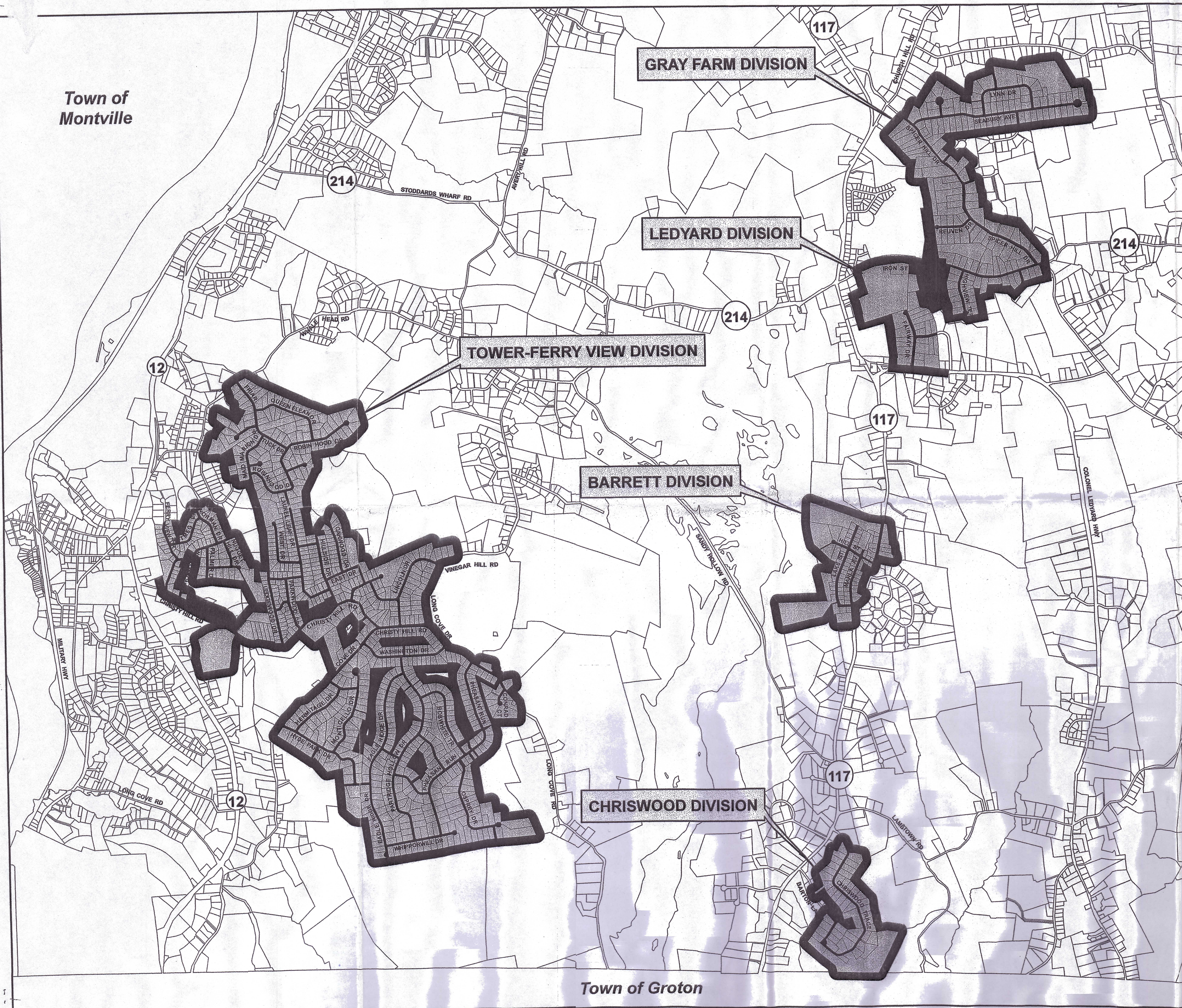


Town of Montville

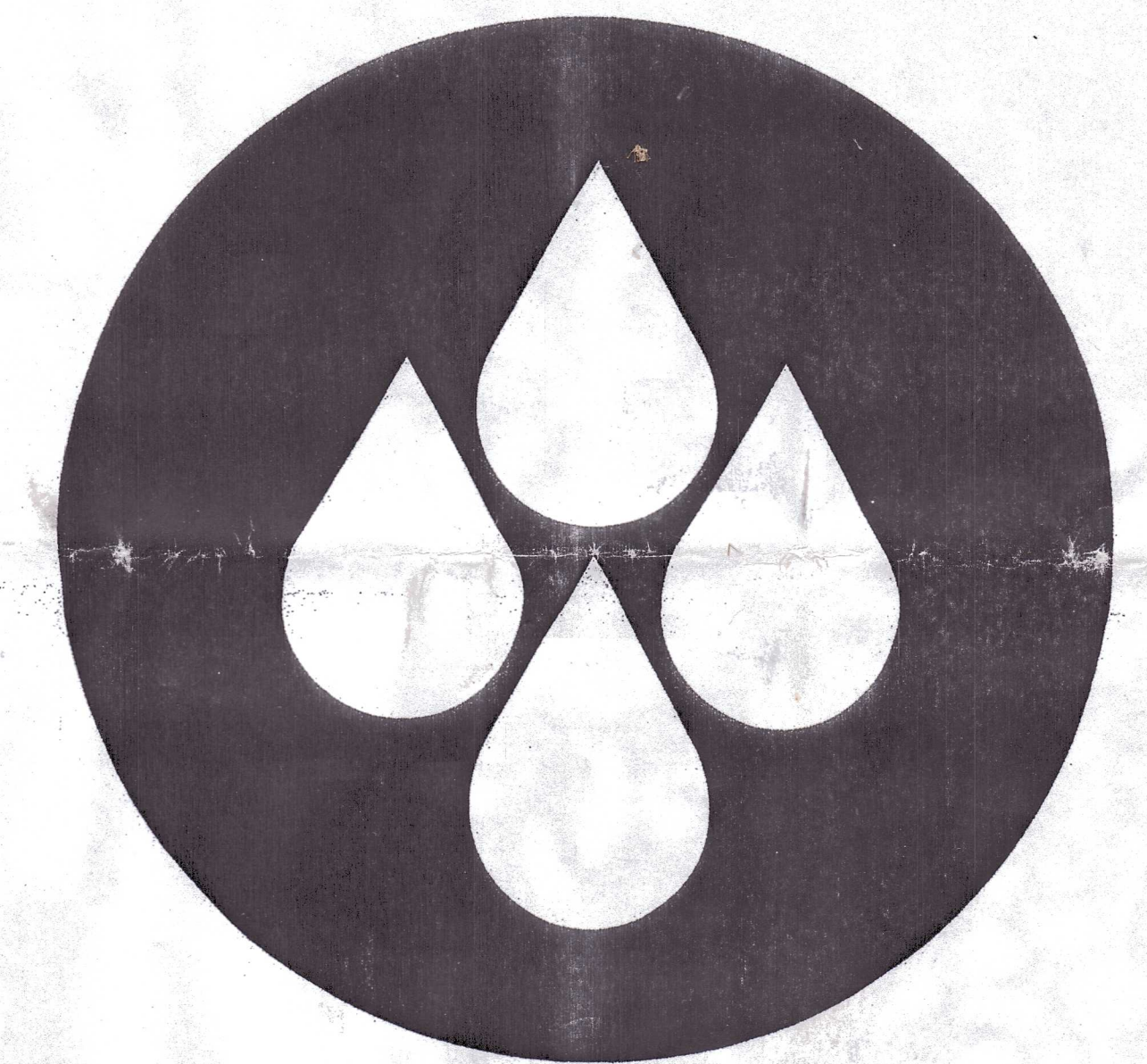
Town of Groton



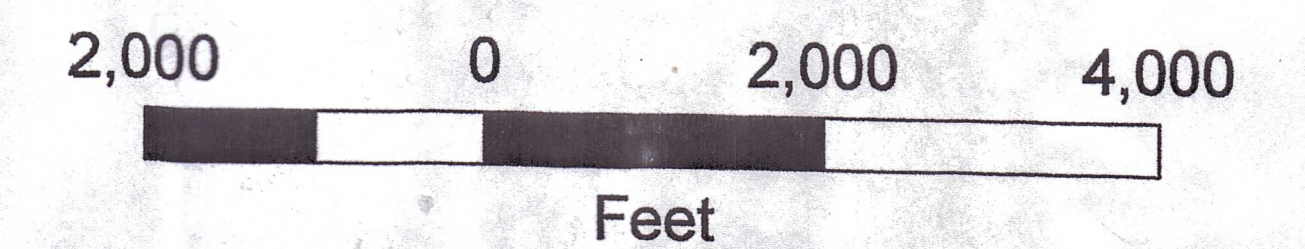
LEDYARD WATER SERVICE AREAS

-  Water Service Area
-  200 ft Expansion Area

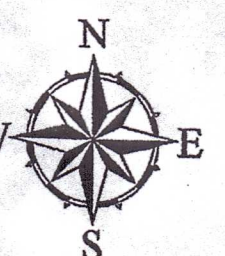
Notes:
 1) Parcel Base Received from Town of Ledyard 01/29/2007.
 2) Ledyard Division Service Area Mapping Data Layer from Town of Ledyard 02/06/2007.
 3) Water Service Area Verified by SCWA February 2007.



SOUTHEASTERN CONNECTICUT WATER AUTHORITY



FEBRUARY 2007



FUSS & O'NEILL
Disciplines to Deliver