

December 23, 2025
Revised January 5, 2026

Re: Sanitary Sewer Service Availability for
Proposed Multifamily Residential Development
1947 Center Groton Road (Route 117), Ledyard, CT

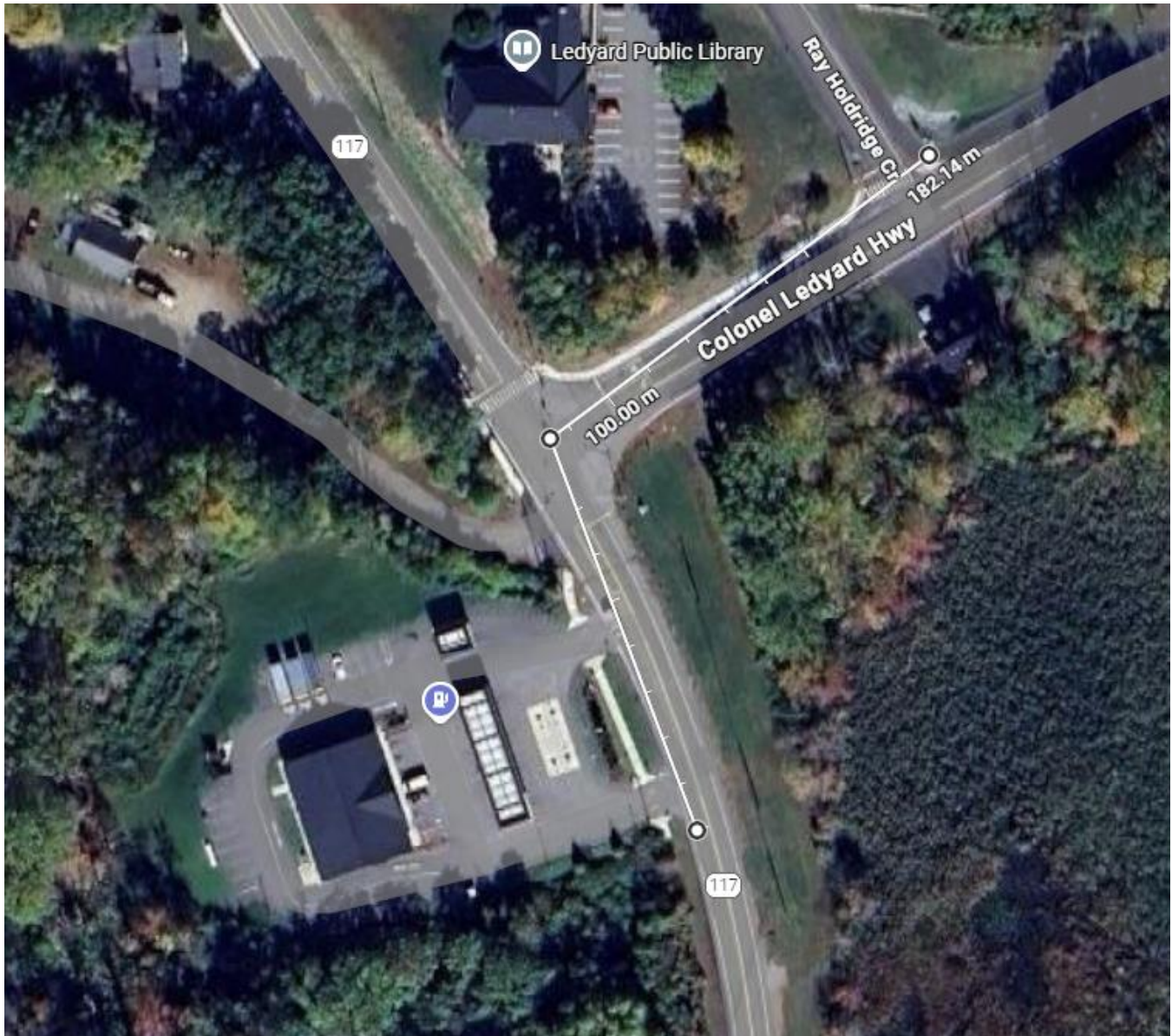
Sanitary – Ledyard WPCA – no sewers by site frontage. There is a force main just north of intersection with Route 27 as depicted on the plan below (per Steve Mosalin, Director of Public Works). Need to determine location, and capacity of existing force main with Ledyard WPCA. Will Serve letter sent out. We would need to pump our sewage up hill to reach the existing force main to tie-in. The State does not allow private utilities, including force mains, to be located within the ROW.

Two options exist:

1. Obtain easements from neighboring properties to extend private forcemain north to reach public forcemain at Route 27.
2. The line would need to be public and owned by WPCA in order to be in the right-of-way. We would need to provide an easement to Ledyard WPCA covering the proposed pump station and forcemain.

According to the website the sewage treatment plant handles 0.17 MGD of flow and is approved for 0.26 MGD and a peak of 0.80 MGD. If the proposed development has two-bedrooms per unit, then the total bedroom count would be 160 bedrooms. At a standard 150 GPD per bedroom, the yield would be 24,000 GPD projected sanitary flow rate. Based on the projected flow rate of 0.024 MGD there appears to be sufficient capacity at the existing treatment plant to accommodate the project. We will confirm this with Ledyard WPCA once final design and the total bedroom count has been determined.

Per 1/05/2026 email from Ed Lynch, WPCA Chaiman, (wpcaledyard@ledyardct.org) there is a two-pressure sewer line behind the library at the signalized intersection. We will need to coordinate with Weston & Sampson on the details and exact location, and will need a pump station to reach it. The use 50 gal/day.unit so our 80 units are projected to generate 7,200 GPD of projected flow.



There is a 4-inch low pressure force main located in Colonel Ledyard Hwy. The manhole is in the bike path at the intersection with the library driveway. The distance from our site to this manhole is approximately 182.1 M or 597-feet. The elevation at the north corner of our site is 270-ft and the elevation at the existing manhole is approximately 289-ft, a difference of 19-ft.

We spoke with Patrick Bateman of Weston & Sampson (batemanp@wseinc.com) who confirmed this information. He could not confirm how much available capacity is left in the 4-in line, but said that it was sized to accept future flows from the south, and there is reserve capacity available. He just didn't know how much.

The low pressure line runs down to Gallup Hill Rd, then discharges into a gravity line at Pennywise Lane, which eventually leads to the Ledyard municipal plant at public works.