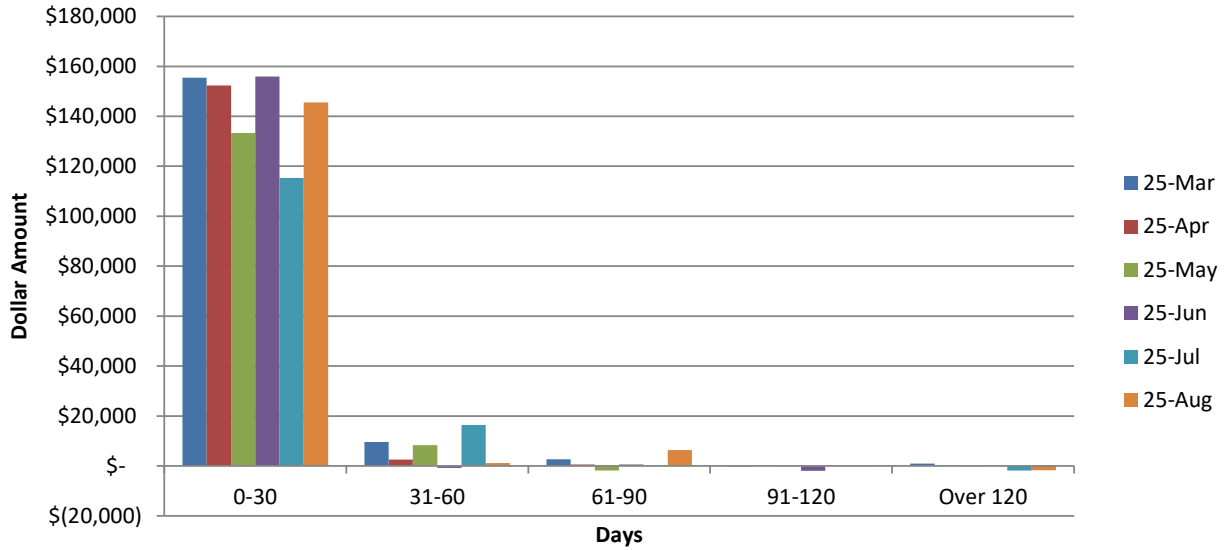


WPCA AGED A/R TRENDS MARCH 2025 - AUGUST 2025



MAR	MAR	MAR	MAR	MAR	
0-30	31-60	61-90	91-120	OVER 120	
\$ 155,425	\$ 9,579	\$ 2,681	\$ (224)	\$ 938	\$ 168,399

APR	APR	APR	APR	APR	
0-30	31-60	61-90	91-120	OVER 120	
\$ 152,283	\$ 2,505	\$ 534	\$ 176	\$ 140	\$ 155,638

MAY	MAY	MAY	MAY	MAY	
0-30	31-60	61-90	91-120	OVER 120	
\$ 133,341	\$ 8,284	\$ (1,870)	\$ (33)	\$ 121	\$ 139,843

JUNE	JUNE	JUNE	JUNE	JUNE	
0-30	31-60	61-90	91-120	OVER 120	
\$ 155,936	\$ (753)	\$ 590	\$ (1,907)	\$ 103	\$ 153,969

JULY	JULY	JULY	JULY	JULY	
0-30	31-60	61-90	91-120	OVER 120	
\$ 115,318	\$ 16,359	\$ 101	\$ 83	\$ (1,854)	\$ 130,006

AUG	AUG	AUG	AUG	AUG	
0-30	31-60	61-90	91-120	OVER 120	
\$ 145,493	\$ 1,207	\$ 6,296	\$ 114	\$ (1,764)	\$ 151,346

Foot Notes:

Cash Collected in the month of August 2025: \$144,660.38