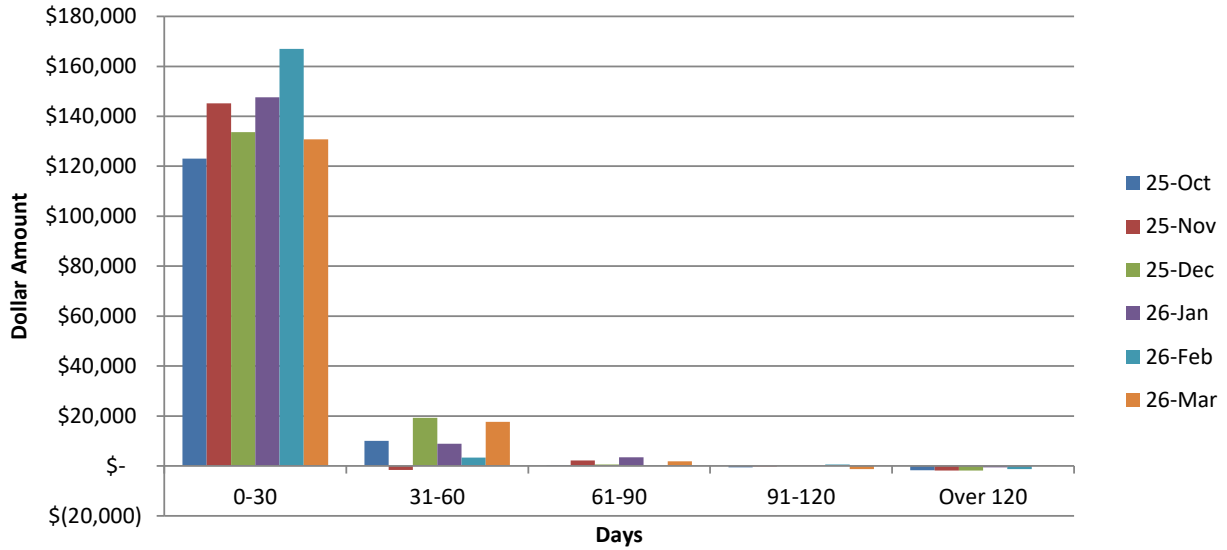


WPCA AGED A/R TRENDS SEPTEMBER 2025 - FEBRUARY 2026



OCT	OCT	OCT	OCT	OCT	
0-30	31-60	61-90	91-120	OVER 120	
\$ 123,030	\$ 10,026	\$ 306	\$ (522)	\$ (1,725)	\$ 131,115

NOV	NOV	NOV	NOV	NOV	
0-30	31-60	61-90	91-120	OVER 120	
\$ 145,240	\$ (1,628)	\$ 2,222	\$ (212)	\$ (1,786)	\$ 143,836

DEC	DEC	DEC	DEC	DEC	
0-30	31-60	61-90	91-120	OVER 120	
\$ 133,648	\$ 19,254	\$ 559	\$ 33	\$ (1,813)	\$ 151,681

JAN	JAN	JAN	JAN	JAN	
0-30	31-60	61-90	91-120	OVER 120	
\$ 147,589	\$ 8,846	\$ 3,423	\$ 164	\$ (607)	\$ 159,416

FEB	FEB	FEB	FEB	FEB	
0-30	31-60	61-90	91-120	OVER 120	
\$ 166,928	\$ 3,349	\$ 67	\$ 599	\$ (1,245)	\$ 169,698

FEB	FEB	FEB	FEB	FEB	
0-30	31-60	61-90	91-120	OVER 120	
\$ 130,831	\$ 17,668	\$ 1,797	\$ (1,261)	\$ 250	\$ 149,285

Foot Notes:

Cash Collected in the month of March 2025: \$166,818.71