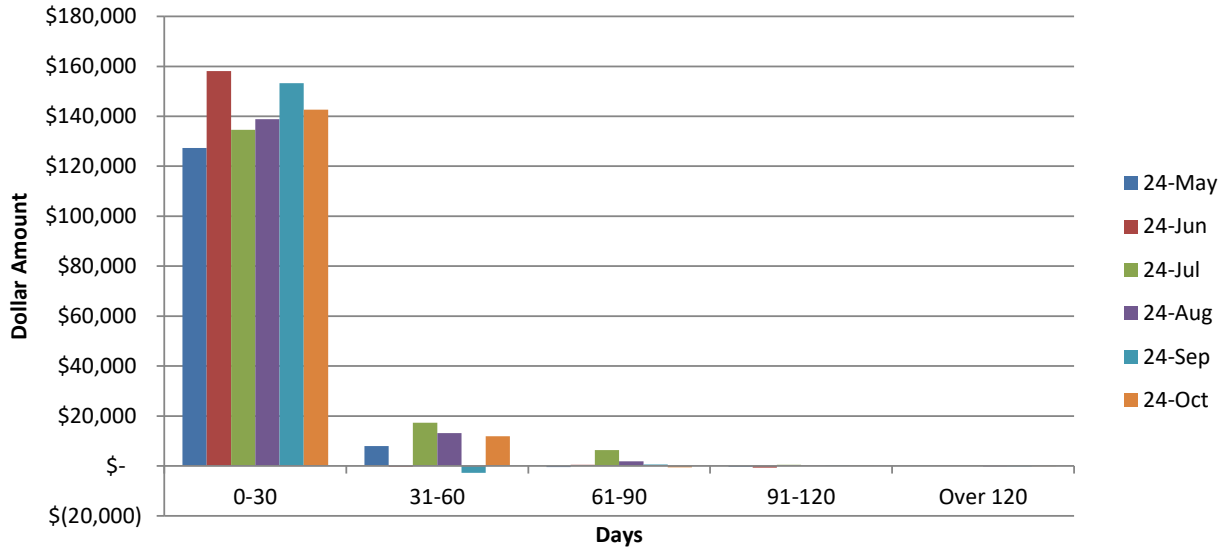


WPCA AGED A/R TRENDS MAY 2024 - OCTOBER 2024



MAY	MAY	MAY	MAY	MAY	
0-30	31-60	61-90	91-120	OVER 120	
\$ 127,347	\$ 8,013	\$ (425)	\$ (359)	\$ 42	\$ 134,618

JUNE	JUNE	JUNE	JUNE	JUNE	
0-30	31-60	61-90	91-120	OVER 120	
\$ 158,118	\$ (285)	\$ 433	\$ (689)	\$ 153	\$ 157,729

JULY	JULY	JULY	JULY	JULY	
0-30	31-60	61-90	91-120	OVER 120	
\$ 134,578	\$ 17,321	\$ 6,362	\$ 500	\$ 100	\$ 158,860

AUG	AUG	AUG	AUG	AUG	
0-30	31-60	61-90	91-120	OVER 120	
\$ 138,830	\$ 13,125	\$ 1,854	\$ 71	\$ (281)	\$ 153,599

SEPT	SEPT	SEPT	SEPT	SEPT	
0-30	31-60	61-90	91-120	OVER 120	
\$ 153,235	\$ (2,779)	\$ 578	\$ 378	\$ (241)	\$ 151,170

OCT	OCT	OCT	OCT	OCT	
0-30	31-60	61-90	91-120	OVER 120	
\$ 142,677	\$ 11,836	\$ (601)	\$ 54	\$ (85)	\$ 153,881

Foot Notes:

Cash Collected in the month of October 2024: \$150,394.00