

ASCEND™

50
YEARS

CELEBRATING
FIFTY YEARS
OF BUILDING IN
NEW YORK & THE NORTHEAST



CHAMPION®
HOME BUILDERS



ASCEND™



ASCEND™

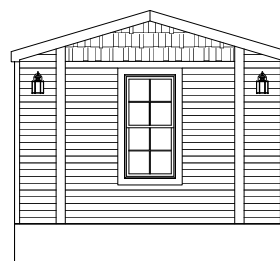
Welcome to Ascend

The Ascend Series has been designed to reflect the needs of families through high-end craftsmanship and quality with affordable amenities and distinctive design details.

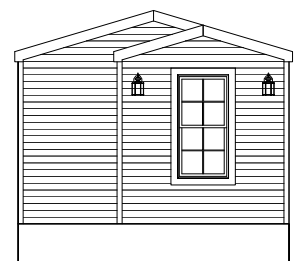
Beyond just building you a house, we're committed to providing you and your family with a home to make memories in that will last a lifetime. Somewhere you can feel secure. A place you can call your own. A home that fits your lifestyle and has your own personal touch. Whether you're an active young family constantly on the go or empty nesters ready to simplify, just relax – we have a home that's right for you.

We build each and every home to meet or exceed a strict national or state building code, and we set even higher standards for ourselves. Focusing on the things you don't see as well as the things you do, we monitor and inspect our homes at every stage of construction. From the plumbing system to the electrical wiring, from the kitchen cabinets to the closets in the bedrooms – every home we build undergoes rigorous quality inspections to ensure we're providing you with nothing but our best.

SINGLE-SECTION ELEVATIONS



HERITAGE

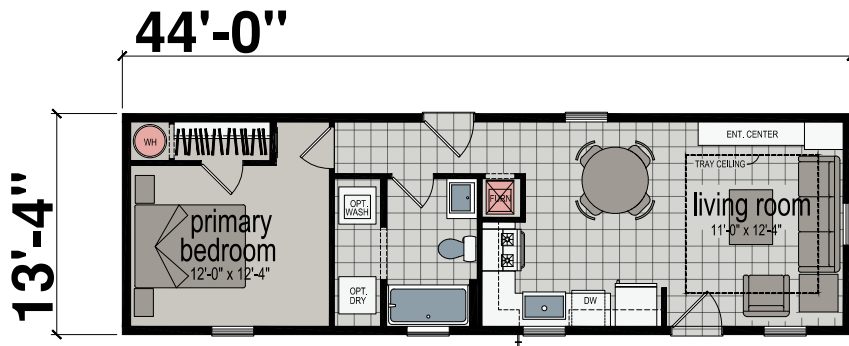


TRADITIONAL

ELITE

STANDARD

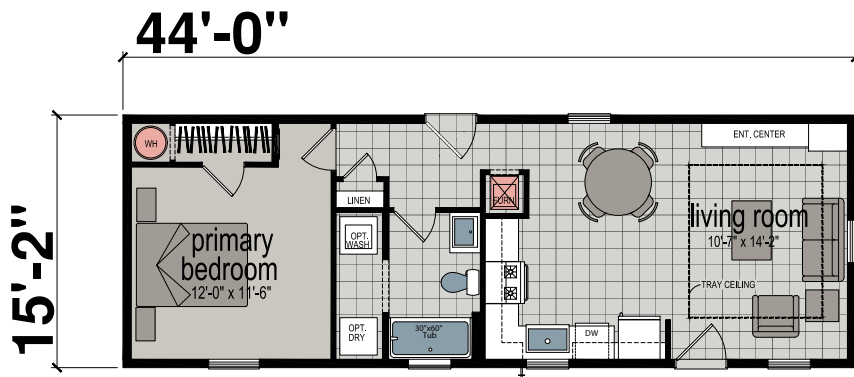
One Bedroom | One Bathroom | 587 Sq. Ft.



AS1444H11178

MAX

One Bedroom | One Bathroom | 668 Sq. Ft.

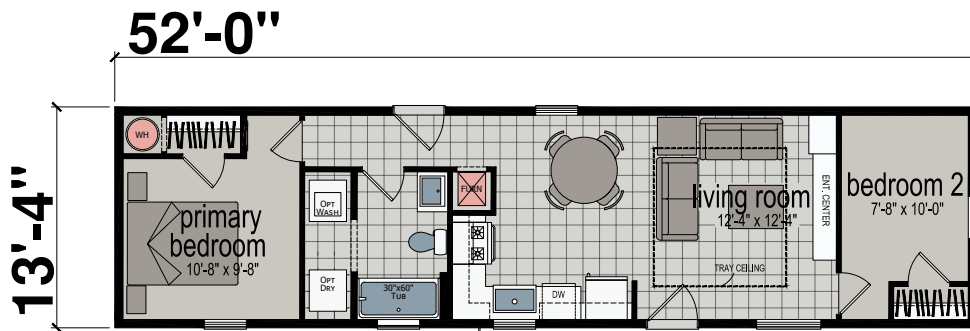


AS1644H11178

ENDEAVOR

STANDARD

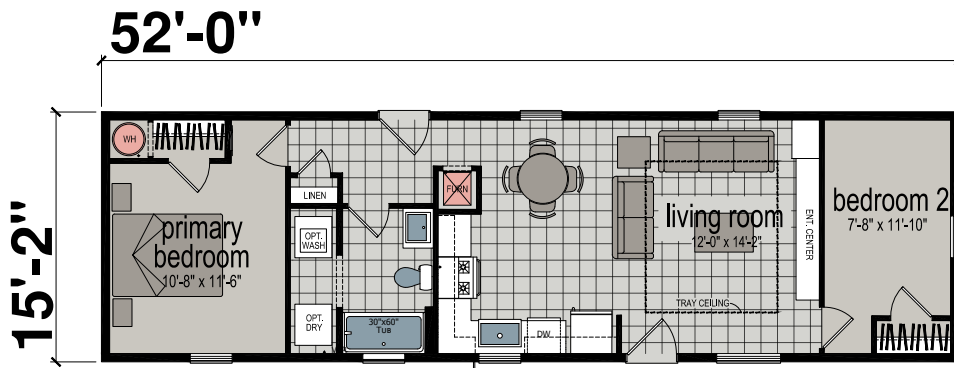
Two Bedroom | One Bathroom | 694 Sq. Ft.



AS1452H21178

MAX

Two Bedroom | One Bathroom | 789 Sq. Ft.

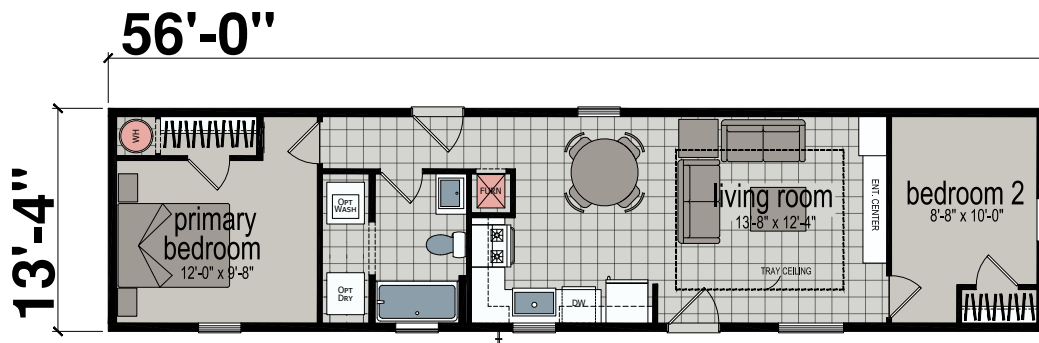


AS1652H21178

EXCEED

STANDARD

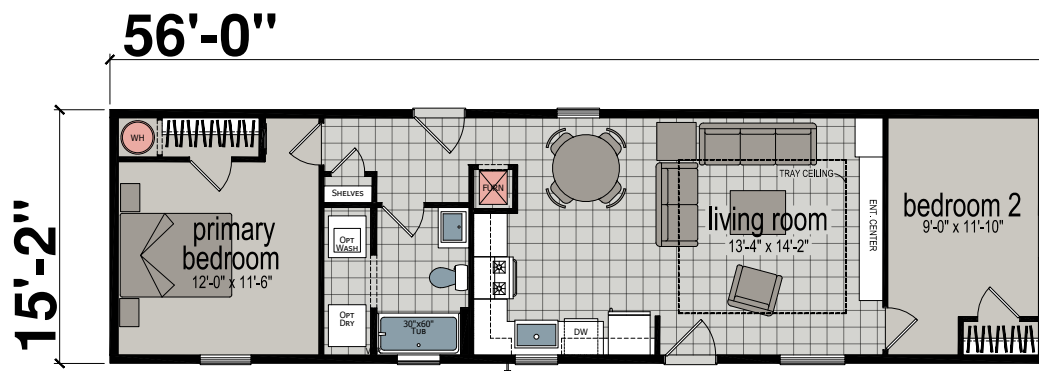
Two Bedroom | One Bathroom | 747 Sq. Ft.



AS1456H21178

MAX

Two Bedroom | One Bathroom | 849 Sq. Ft.

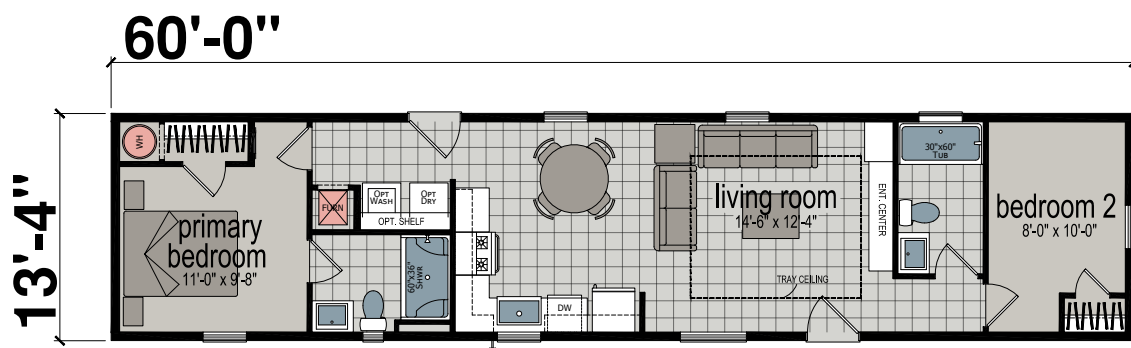


AS1656H21178

AFFINITY

STANDARD

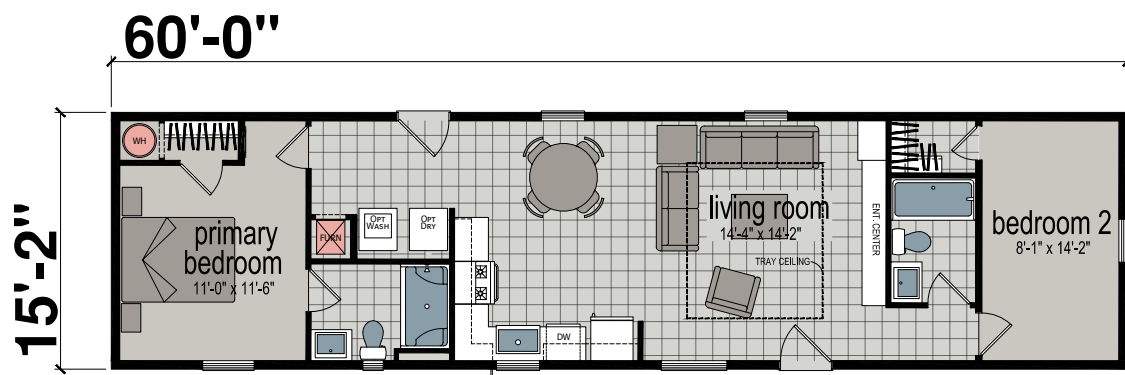
Two Bedroom | Two Bathroom | 800 Sq. Ft.



AS1460H22101

MAX

Two Bedroom | Two Bathroom | 910 Sq. Ft.



AS1660H22101

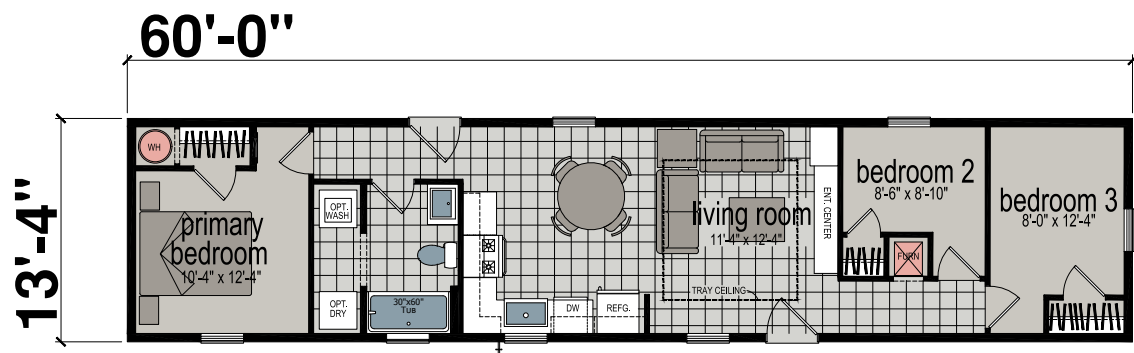
ASCEND™ AFFINITY



ENSURE

STANDARD

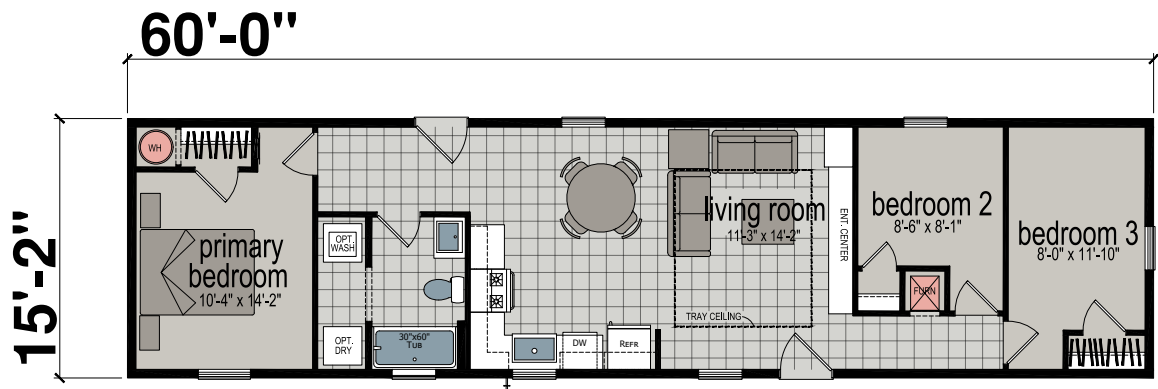
Three Bedroom | One Bathroom | 800 Sq. Ft.



AS1460H31188

MAX

Three Bedroom | One Bathroom | 910 Sq. Ft.

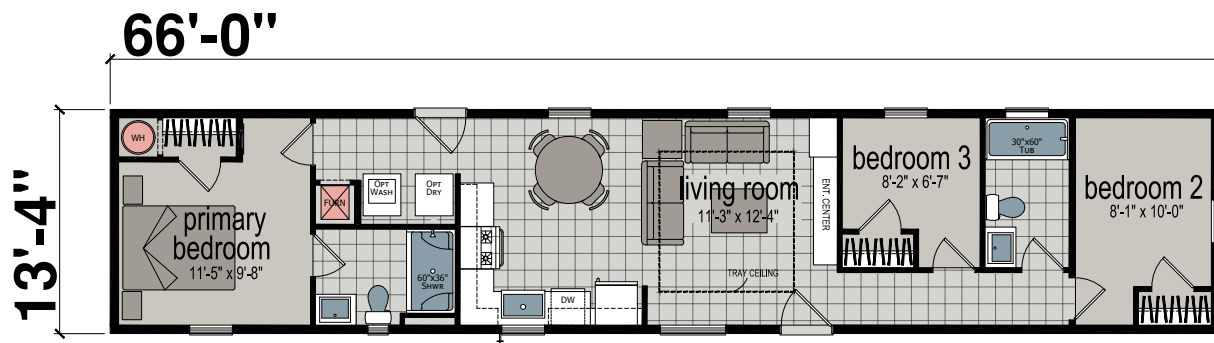


AS1660H31188

INVITE

STANDARD

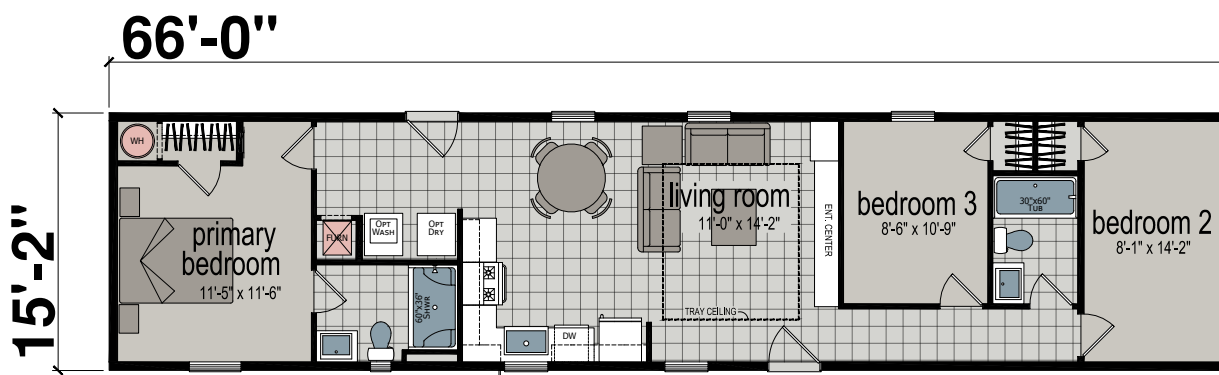
Three Bedroom | Two Bathroom | 880 Sq. Ft.



AS1466H32021

MAX

Three Bedroom | Two Bathroom | 1,001 Sq. Ft.

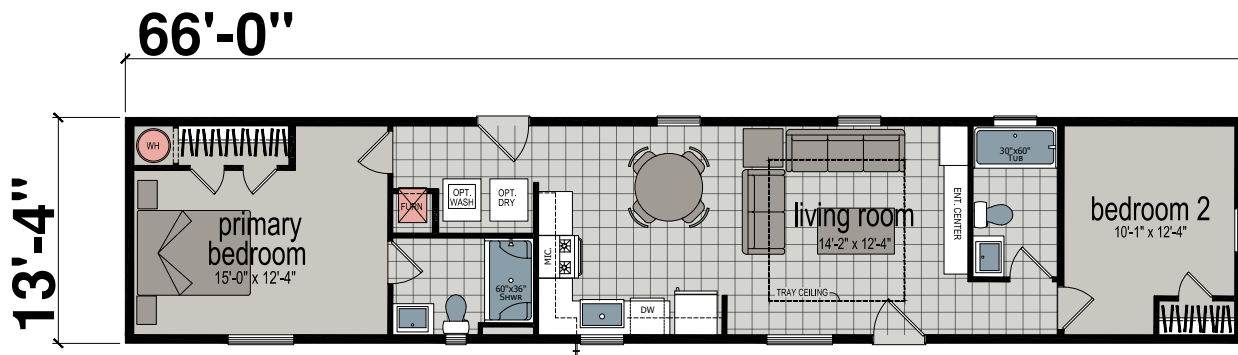


AS1666H32021

EMBARK

STANDARD

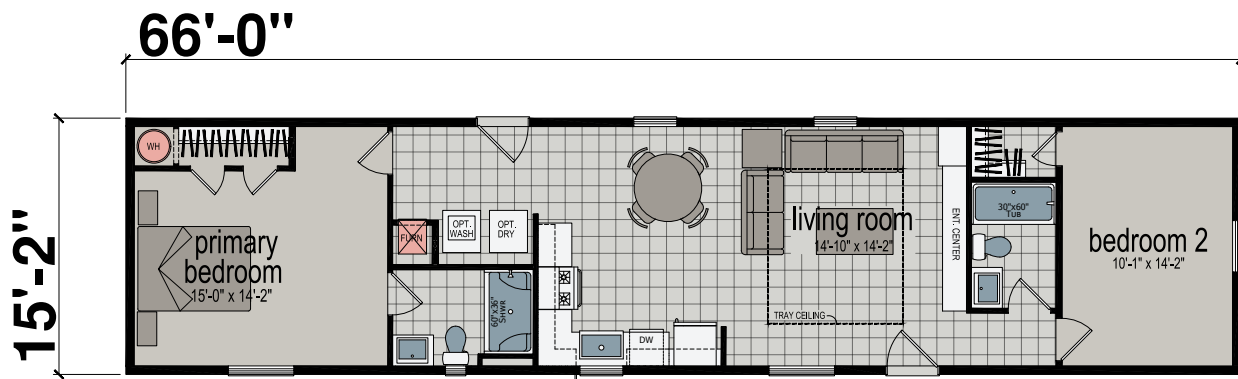
Three Bedroom | Two Bathroom | 880 Sq. Ft.



AS1466H32021

MAX

Three Bedroom | Two Bathroom | 1,001 Sq. Ft.



AS1666H32021



ELEVATE (P. 26)



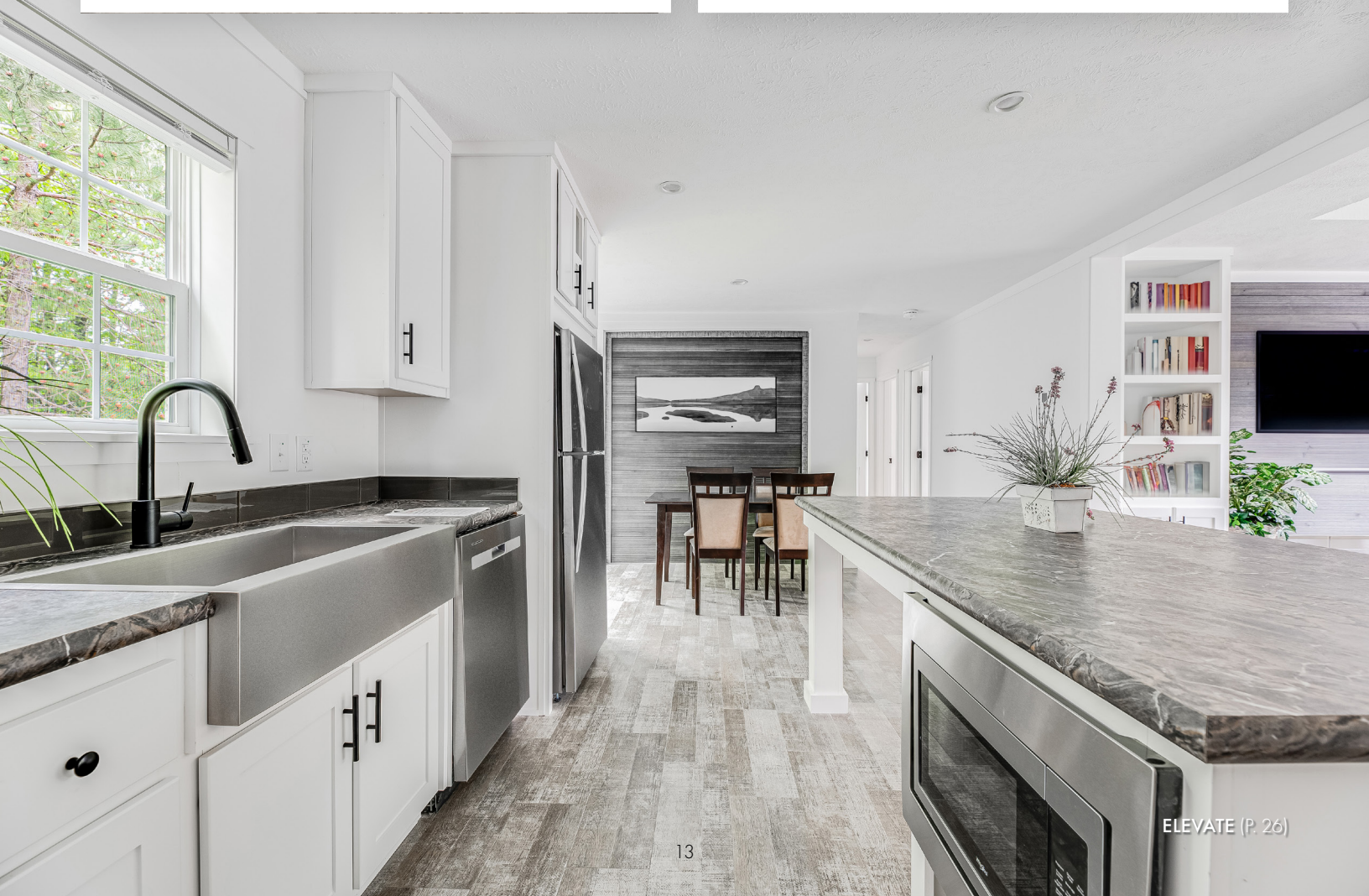
ELEVATE (P. 26)



ASPIRE (P. 18)



PURSUIT (P. 22)

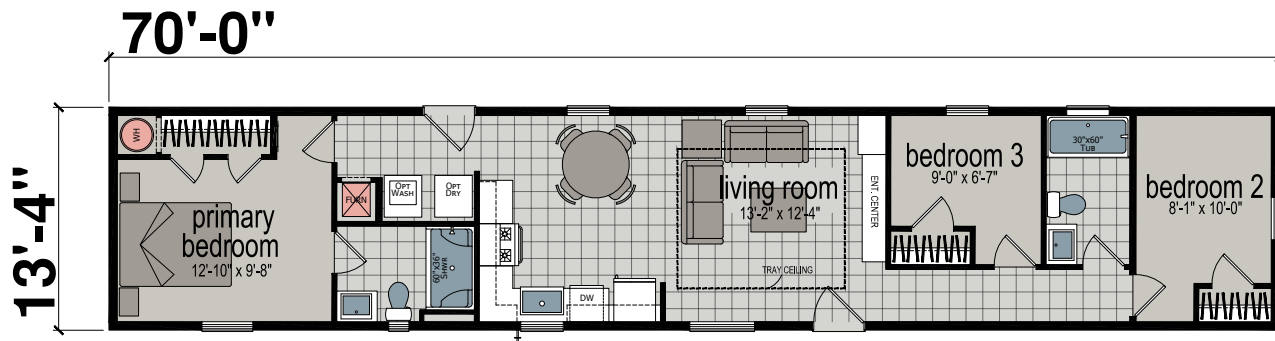


ELEVATE (P. 26)

ACCOLADE

STANDARD

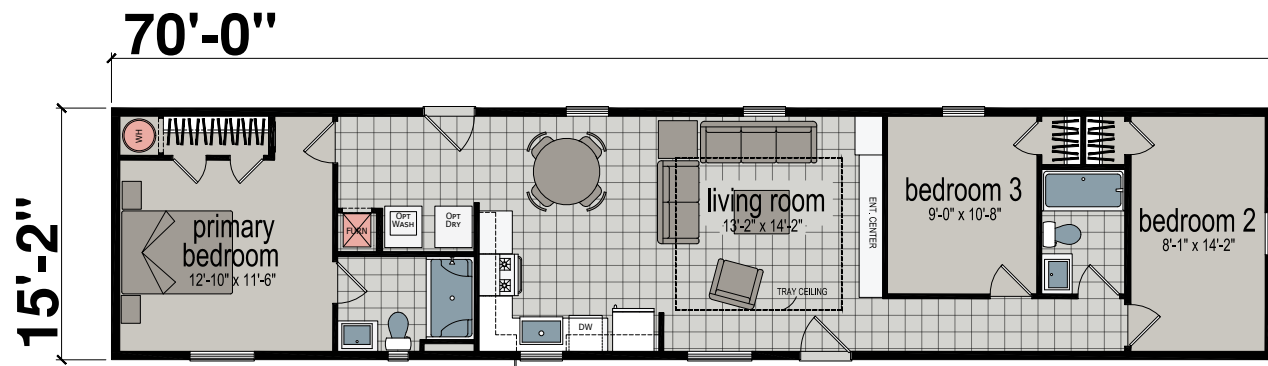
Three Bedroom | Two Bathroom | 934 Sq. Ft.



AS1470H32098

MAX

Three Bedroom | Two Bathroom | 1,062 Sq. Ft.

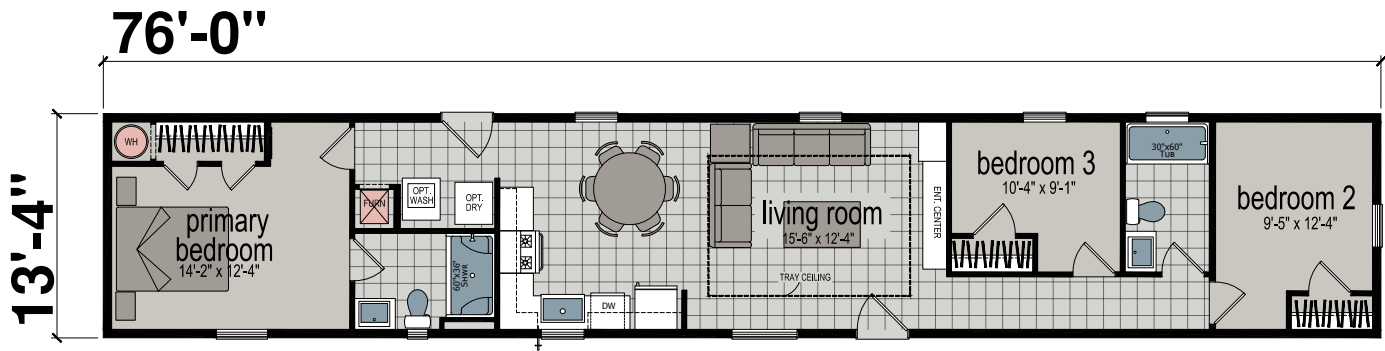


AS1670H32098

EXALT

STANDARD

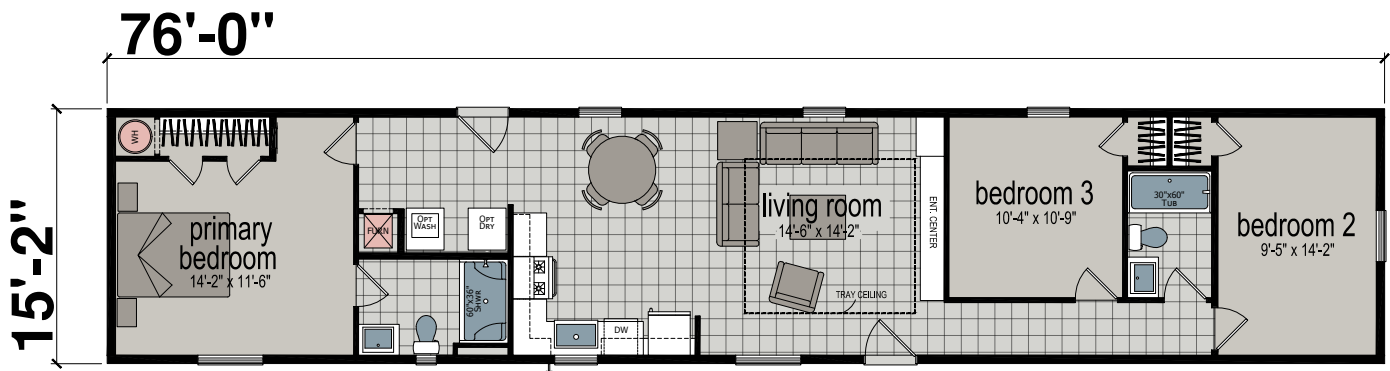
Three Bedroom | Two Bathroom | 1,013 Sq. Ft.



AS1476H32098

MAX

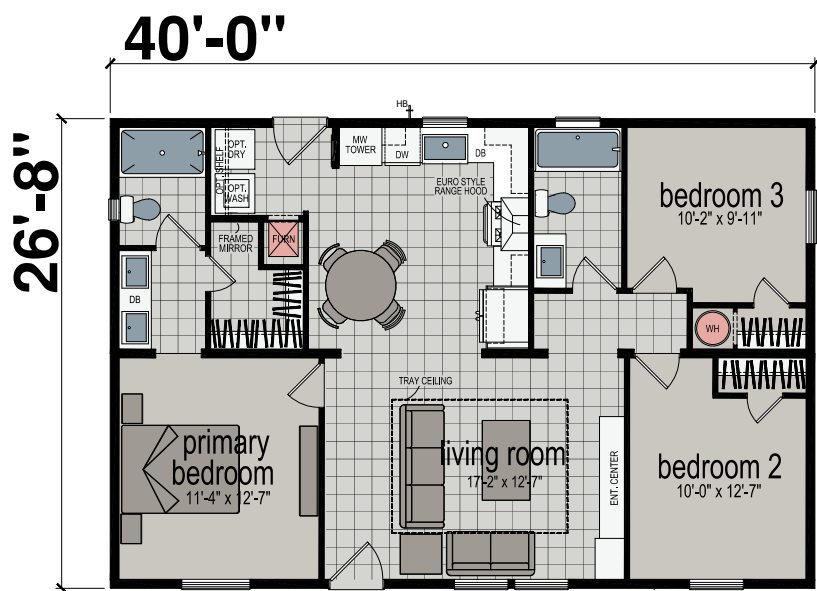
Three Bedroom | Two Bathroom | 1,153 Sq. Ft.



AS1676H32098

IDEAL

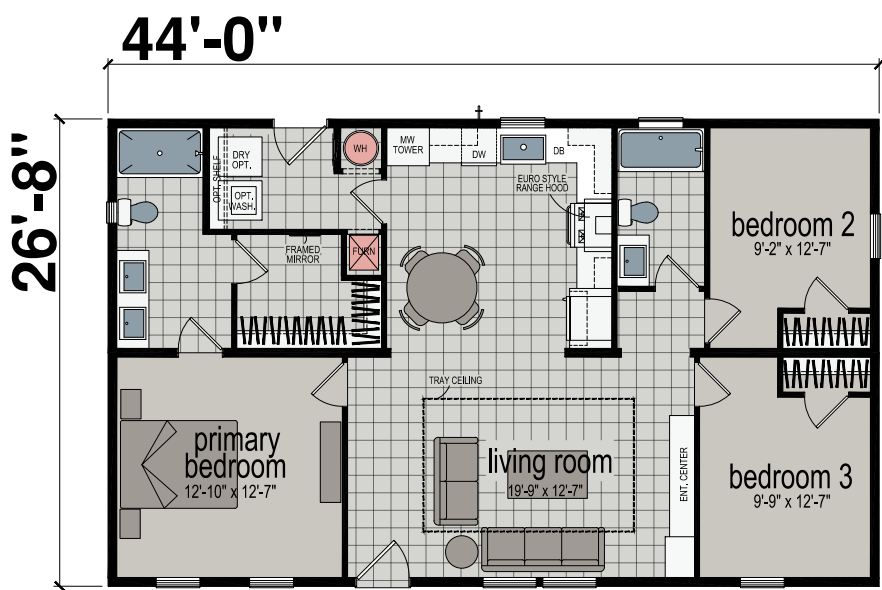
Three Bedroom | Two Bathroom | 1,067 Sq. Ft.



AS2840H32334

ESPIRIT

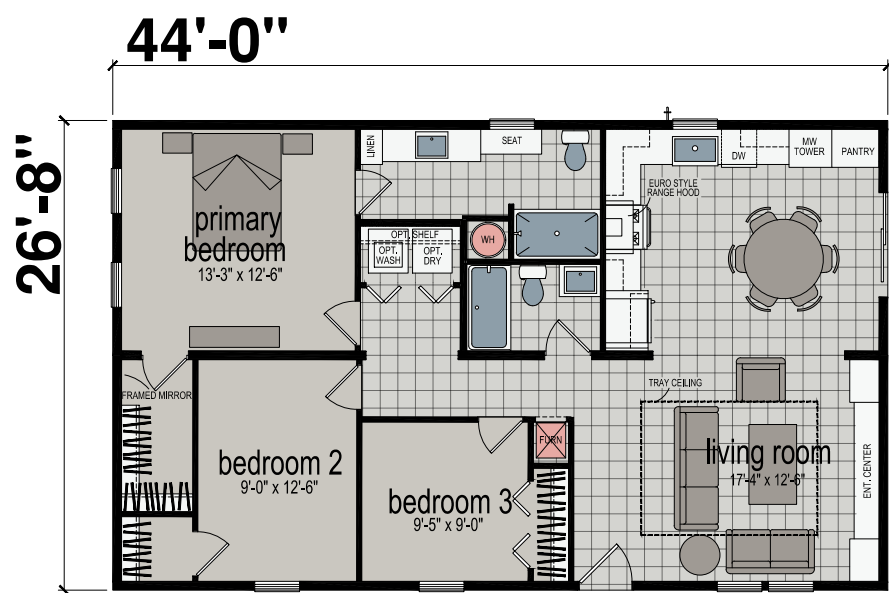
Three Bedroom | Two Bathroom | 1,174 Sq. Ft.



AS2844H32190

ENCORE

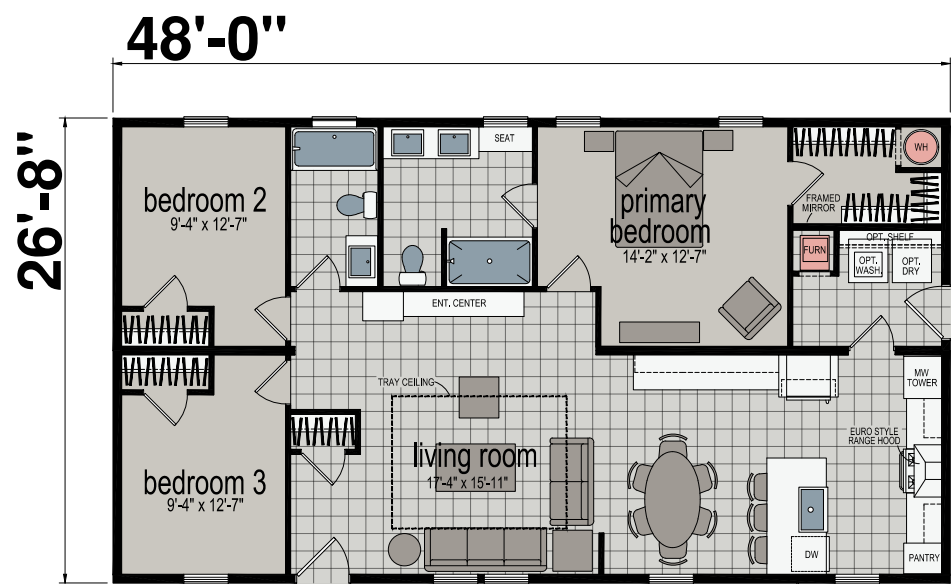
Three Bedroom | Two Bathroom | 1,174 Sq. Ft.



AS2844H32332

INTRIGUE

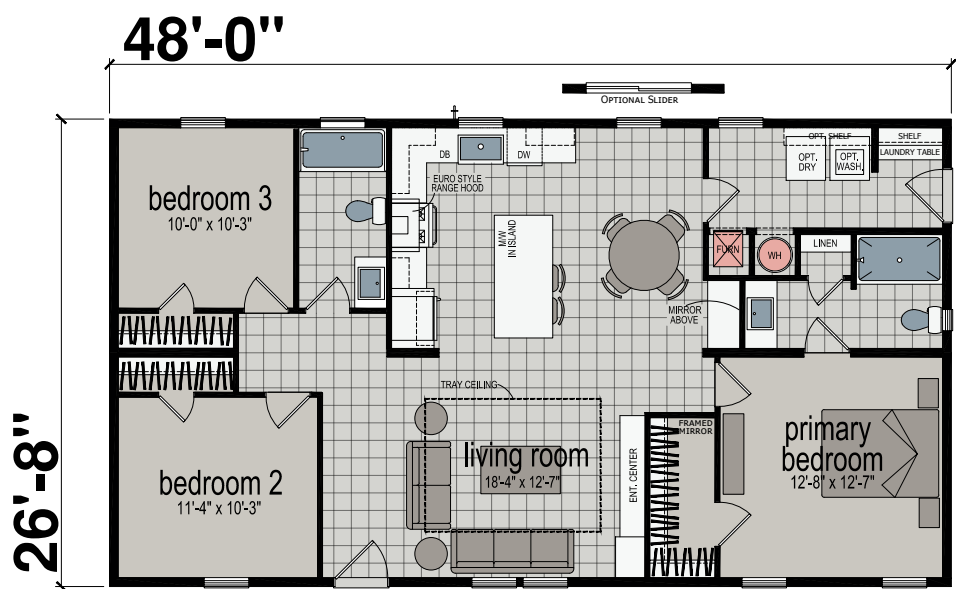
Three Bedroom | Two Bathroom | 1,280 Sq. Ft.



AS2848H32170

ASPIRE

Three Bedroom | Two Bathroom | 1,280 Sq. Ft.

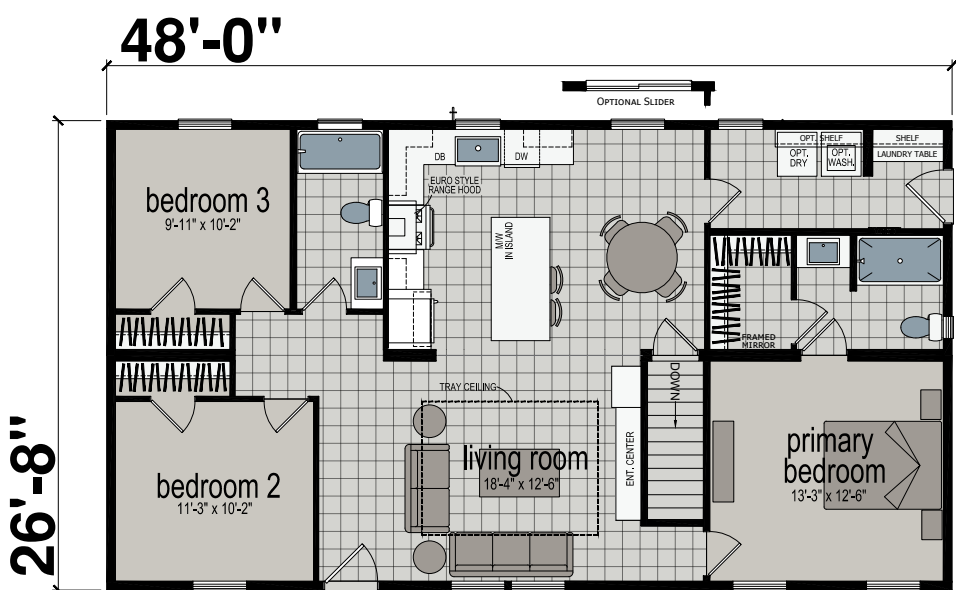


AS2848H32010

MODULAR

ASPIRE

Three Bedroom | Two Bathroom | 1,280 Sq. Ft.



AS2848M32010-MOD

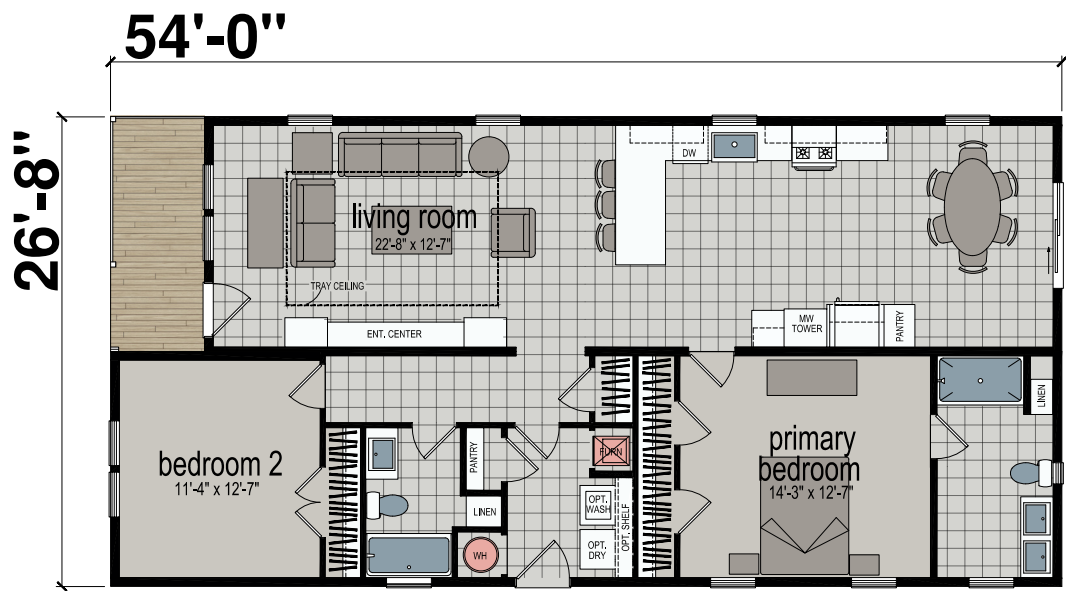
ASCEND™

ASPIRE



ACCLAIM

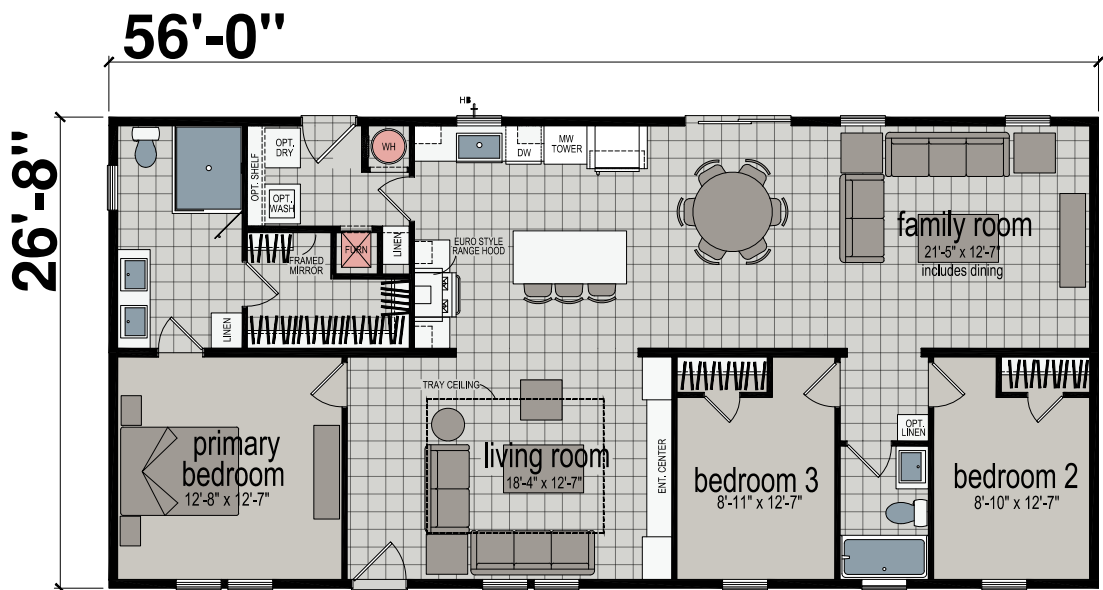
Two Bedroom | Two Bathroom | 1,440 Sq. Ft.



AS2854H22197

INSIGHT

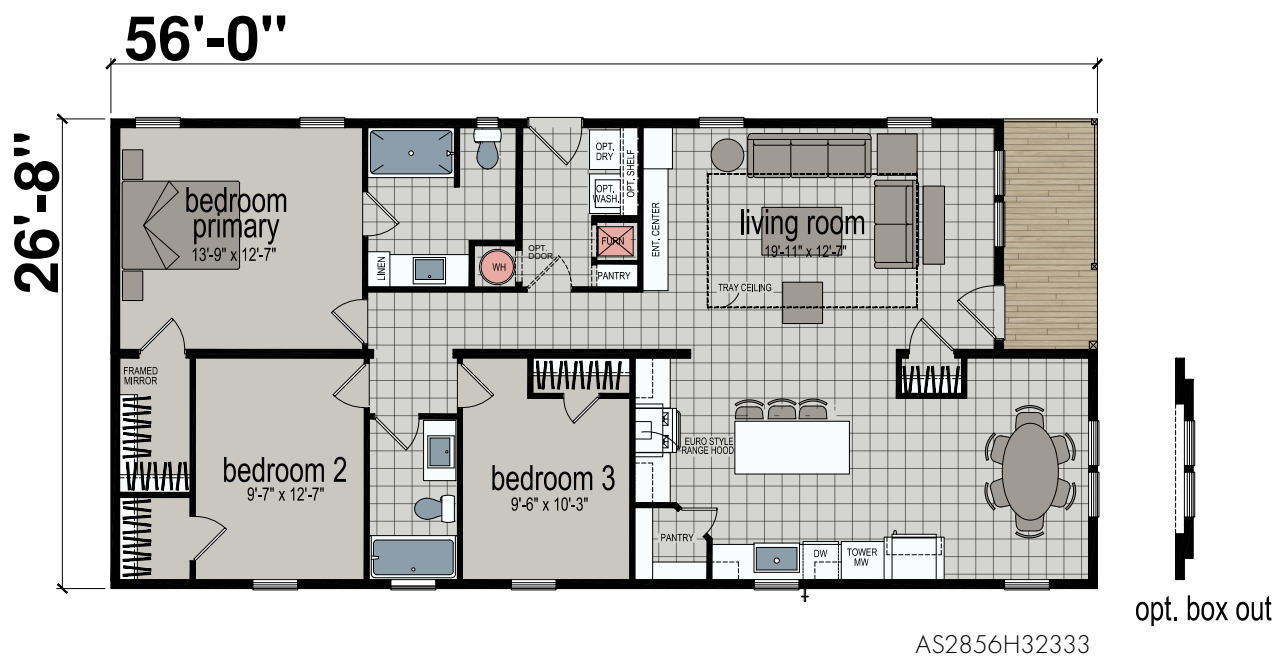
Three Bedroom | Two Bathroom | 1,493 Sq. Ft.



AS2856H32034

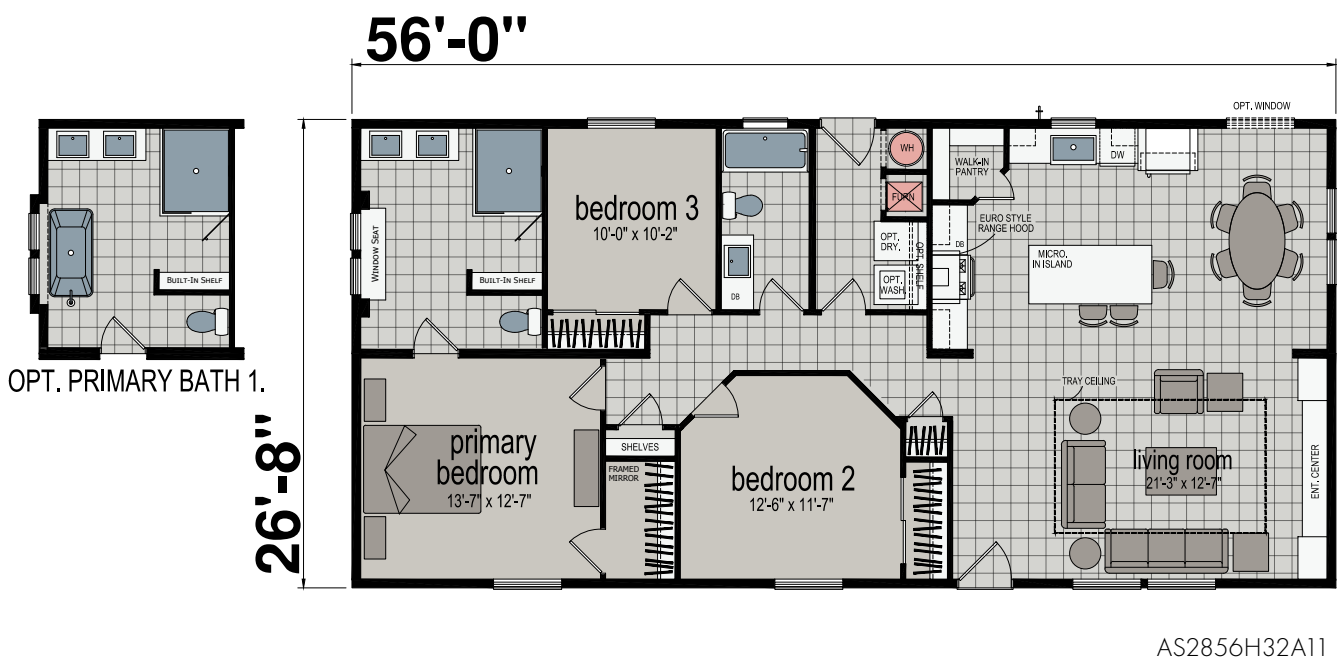
EVOKE

Three Bedroom | Two Bathroom | 1,493 Sq. Ft.



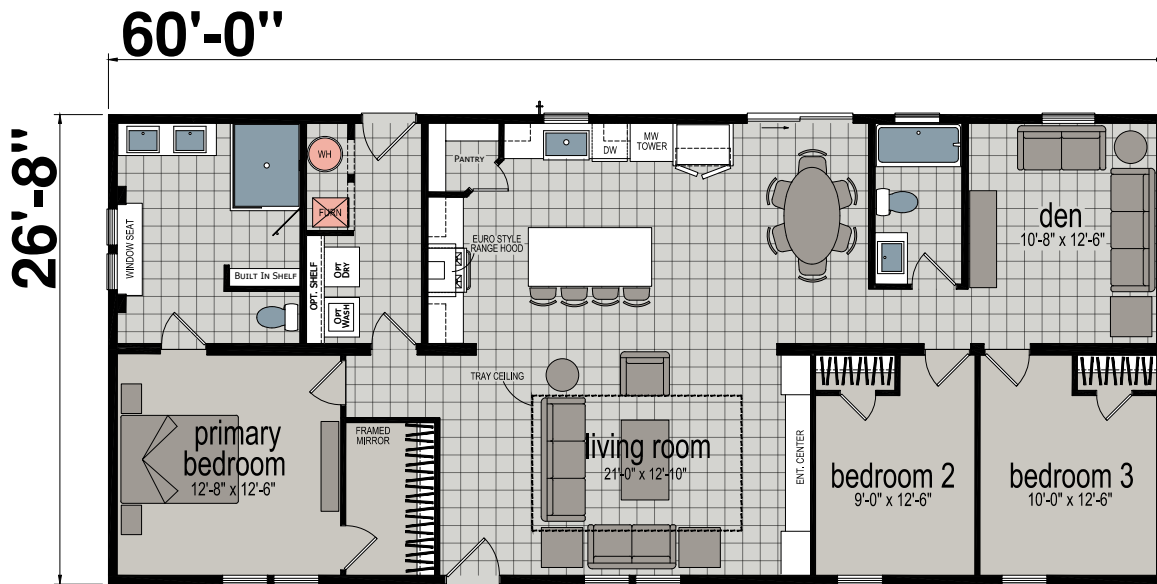
ADVANCE

Three Bedroom | Two Bathroom | 1,493 Sq. Ft.

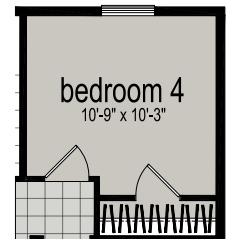


PURSUIT

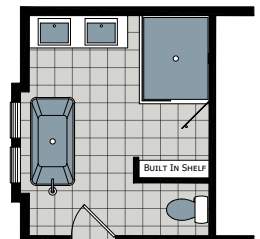
Three Bedroom | Two Bathroom | 1,600 Sq. Ft.



AS2860H32A1A



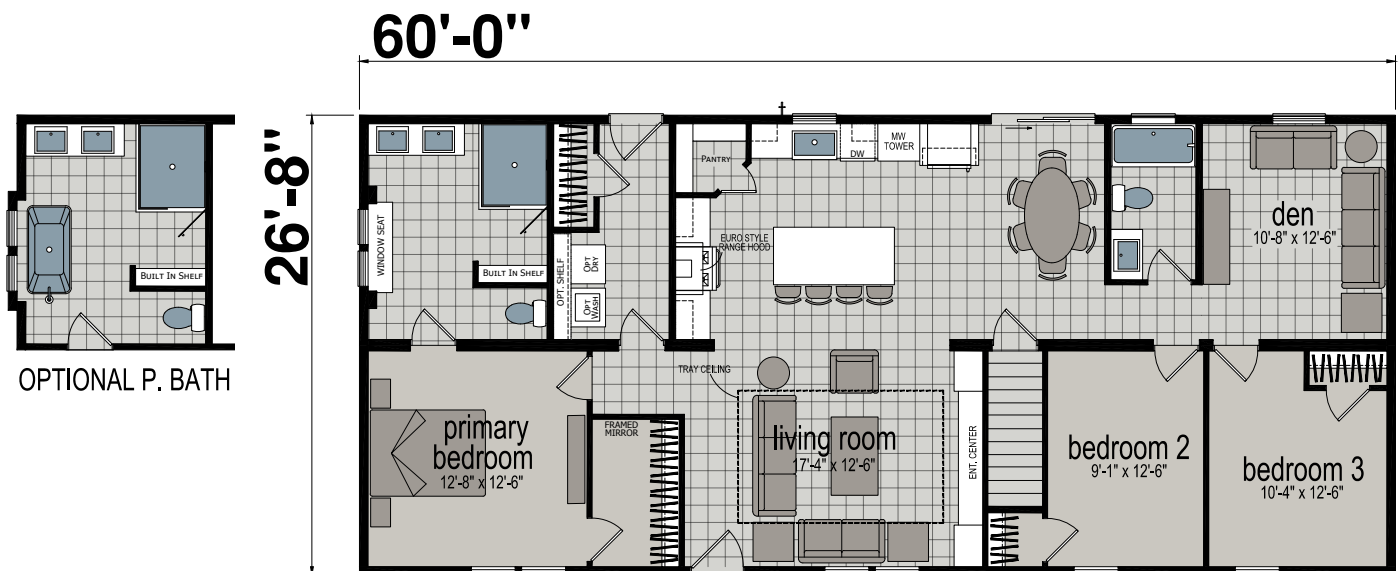
OPTIONAL 4TH. BEDROOM



OPTIONAL P. BATH 1.

MODULAR PURSUIT

Three Bedroom | Two Bathroom | 1,600 Sq. Ft.



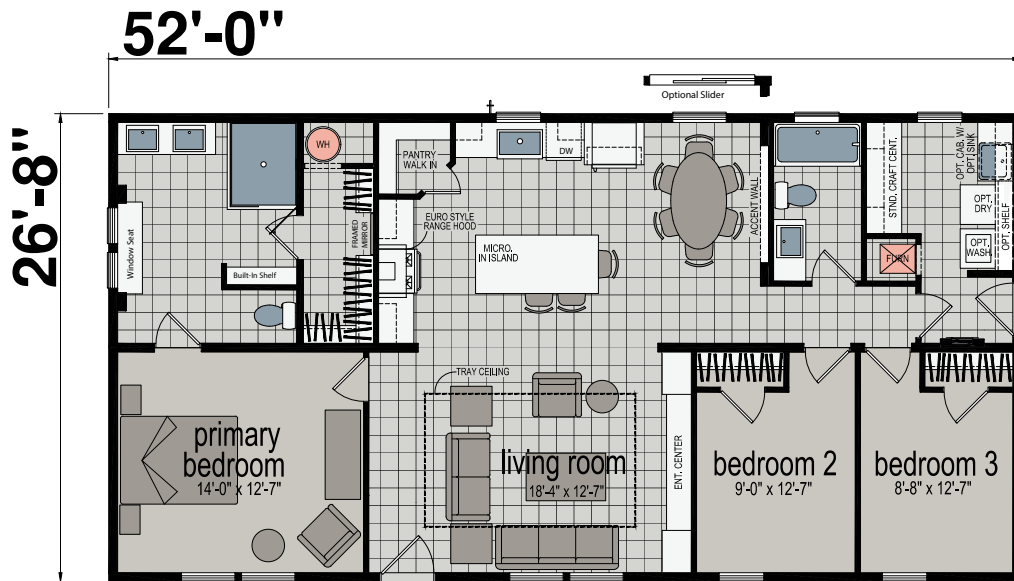
AS2860M32A1A

ASCEND™ PURSUIT

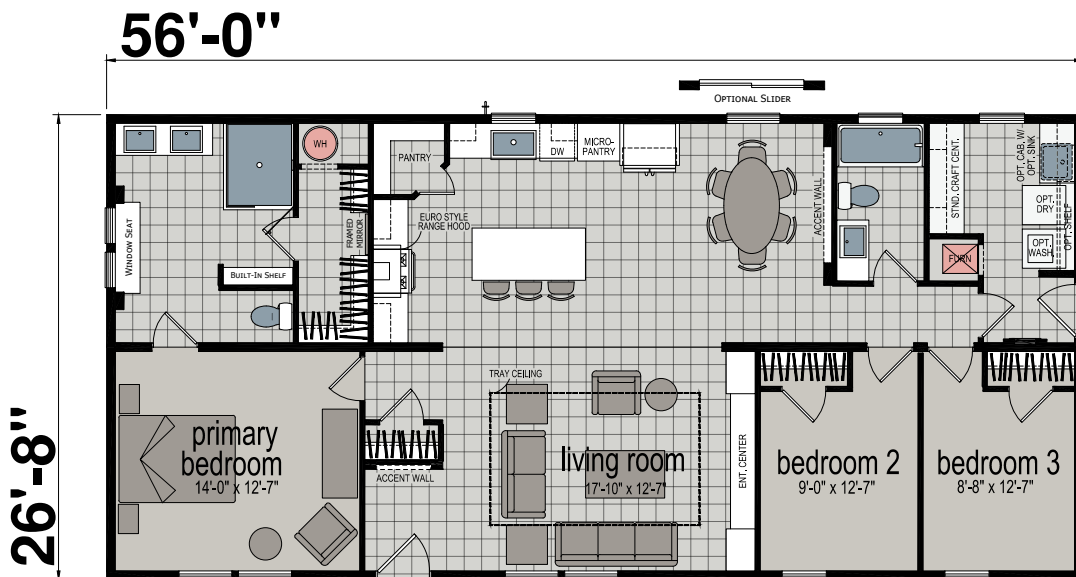


ELEVATE | FAMILY of PLANS

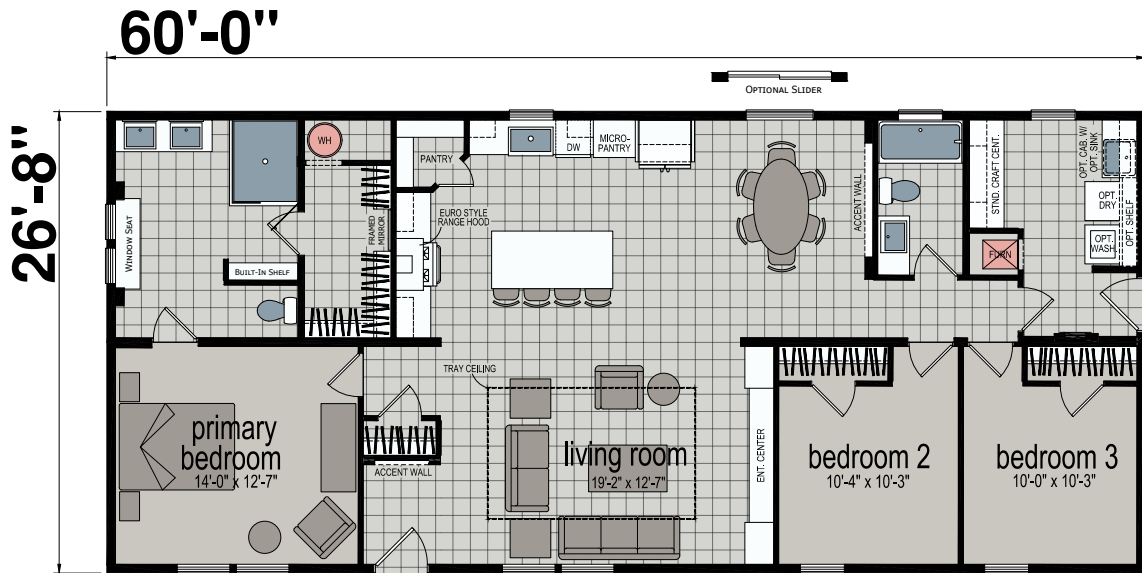
Three Bedroom | Two Bathroom | 1,387 Sq. Ft.



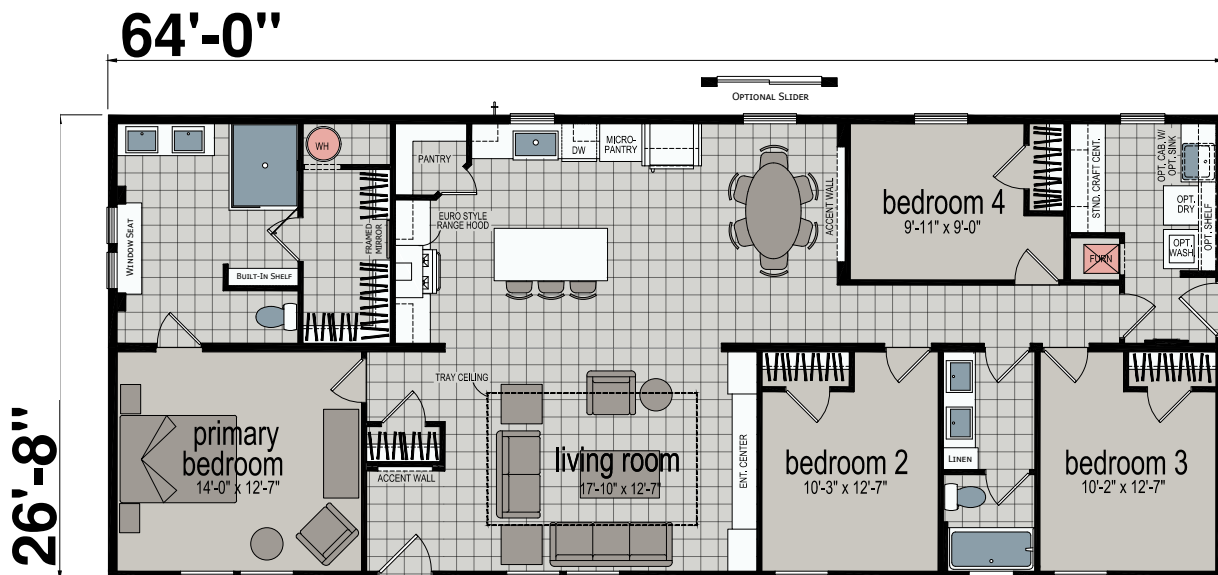
Three Bedroom | Two Bathroom | 1,493 Sq. Ft.



Three Bedroom | Two Bathroom | 1,600 Sq. Ft.

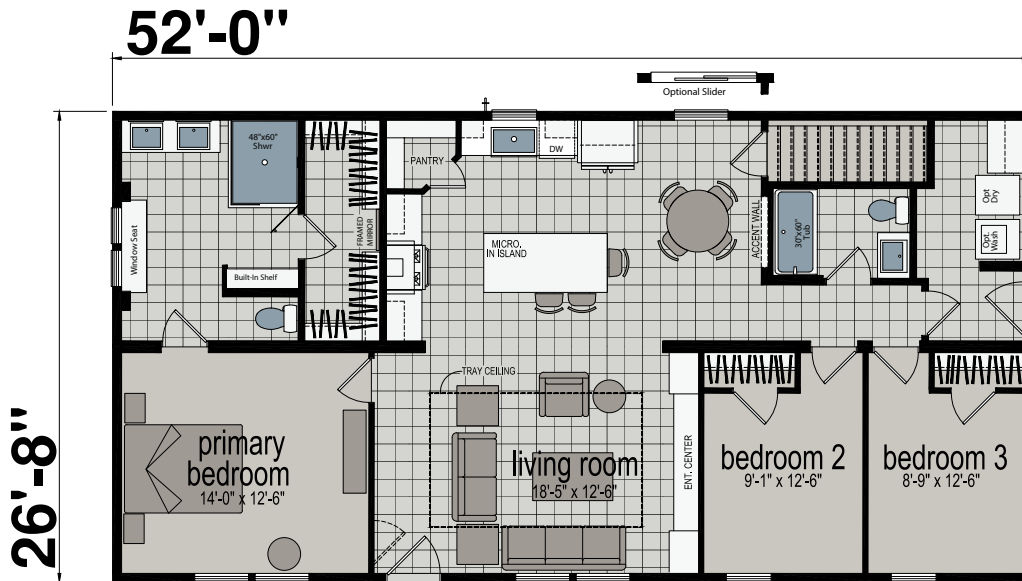


Four Bedroom | Two Bathroom | 1,707 Sq. Ft.



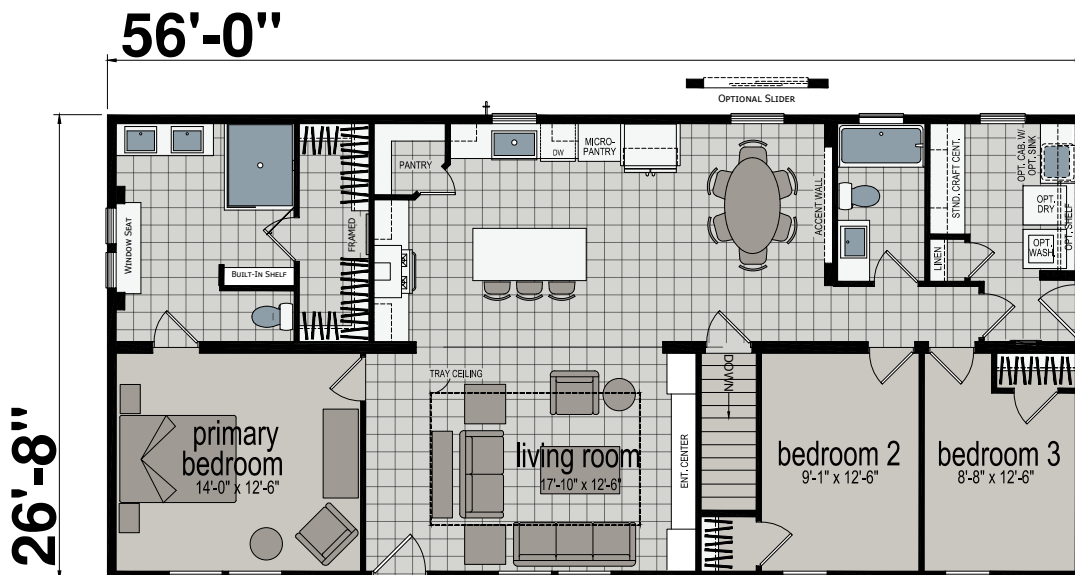
ELEVATE | MODULAR

Three Bedroom | Two Bathroom | 1,387 Sq. Ft.



2852M32A1C-MOD

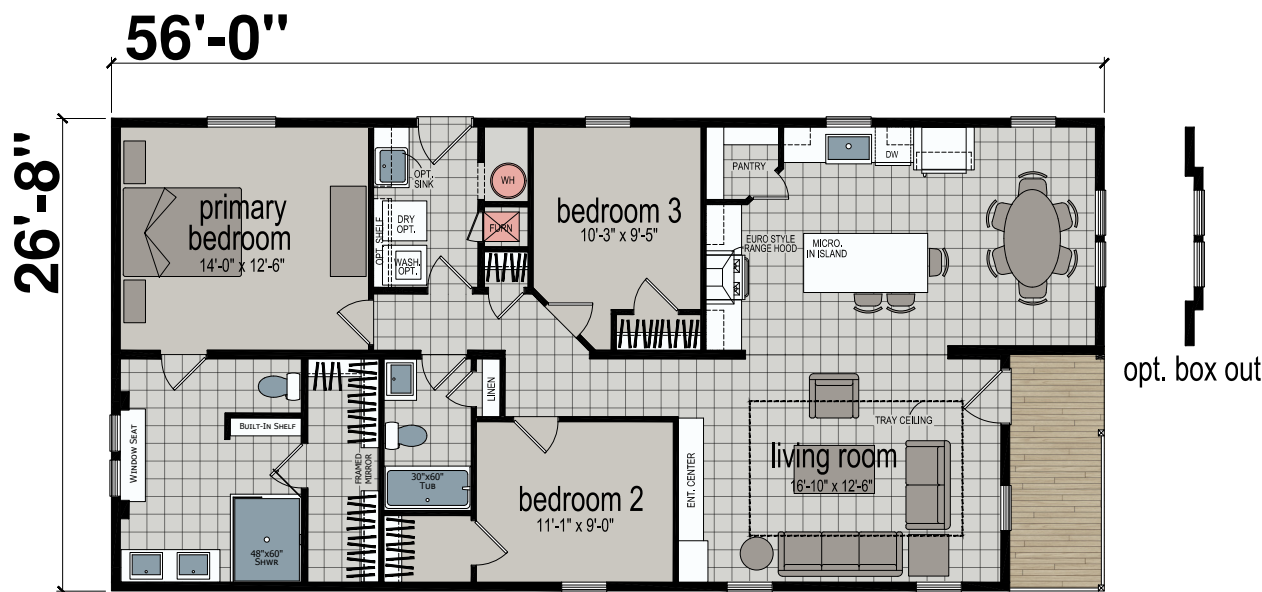
Three Bedroom | Two Bathroom | 1,493 Sq. Ft.



2856M32A1C-MOD

ELEVATE | 56F

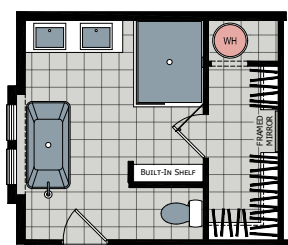
Two Bedroom | Two Bathroom | 1,493 Sq. Ft.



ASCTN2-25

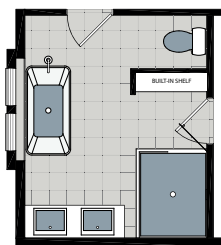
ELEVATE FAMILY of PLANS | Optional Features

Optional Primary Bath w/ Tub



52', 56', 60', & 64' HUD

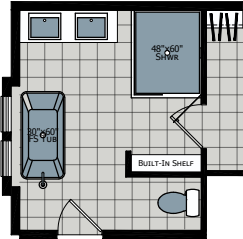
Optional Primary Bath w/ Tub



56F

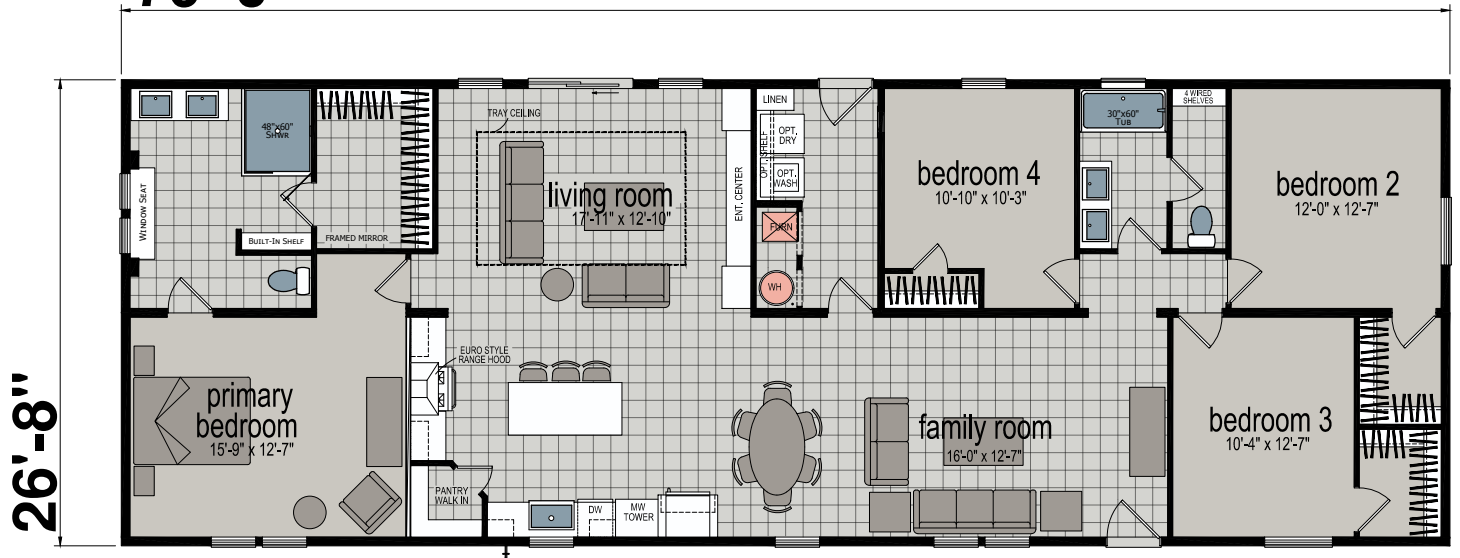
ARISE

Four Bedroom | Two Bathroom | 2,027 Sq. Ft.



OPTIONAL P. BATH

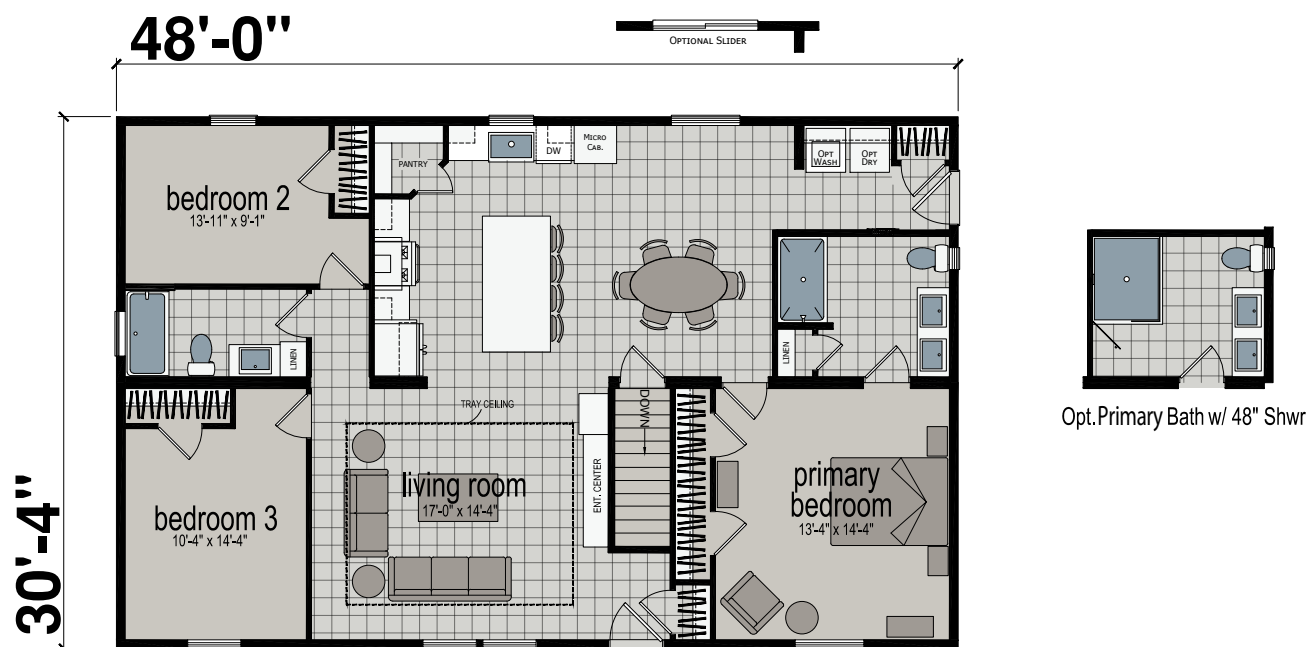
76'-0"



AS2876H42A1X

MODULAR
ATTAIN

Three Bedroom | Two Bathroom | 1,456 Sq. Ft.



3248M32010

HUD | STANDARD FEATURES

Construction

- Wind Zone 1
- R-30 Roof Insulation
- 30# Load / 24" O.C. Truss
- Nominal 3/12 Roof Pitch
- R-22 Floor Insulation
- 2x6 Floor Joists 16" O.C.
- Thermo-Brace® Exterior Sheathing
- R-19 Wall Insulation
- 8' Flat Ceiling
- 4" Recessed Frame
- Removable Hitch
- Ascend Dormer
- Tray Ceiling in Living Room
- 2x6 Sidewalls 16" O.C.
- 19/32 OSB Floor Decking
- 7/16 OSB Roof Decking
- 2x3 Double Marriage Walls
- Marriage Line Thermal Gasket

Exterior

- 36x80 Craftsman Front Door
- 36x80 9-Light Rear Door
- 3-Tab Shingles - Black Only
- Vinyl Siding
- Window Lineals Front Door Side (Multi-Section)
- Window Lineals Front Door Side & Hitch End (Single-Section)
- Low-E Thermal Pane Windows

Interior

- 3-Panel Interior Doors
- Stipple Ceiling
- Ascend Entertainment Center in Living Room
- 2" Blinds Throughout
- Wide Linoleum Transition Piece (Multi-Section)
- Craftsman Package Molding Throughout
- White Wood Windowsills
- Metal Furnace Door Standard
- Finished Drywall - All Rooms & Primary Closet with Standard White Wall Primer

Interior (Continued)

- Secondary Bedroom Closets
- Sheetrock w/ Batten Corners
- Linoleum in Living Room, Kitchen, Dining Room, Den/Family Room & Baths
- Take Away Series Carpet All Bedrooms
- White Rigid Thermal Foil or Wood Cabinet Doors & Stiles
- Laminate Countertops w/ (1) Row of Ceramic/Glass Backsplash
- Crescent Edge Throughout
- Black Faucets, Doorknobs, Hinges & Cabinet Pulls
- Residential Shelving in Primary with 72" Framed Mirror (Walk-In Closets Only)

Plumbing

- Atmospheric Gas Furnace
- Perimeter Heat
- 40-Gallon Electric Water Heater w/ Drip Pan
- Whole House Water Shut-Off
- Water Shut-Offs Throughout
- (1) Exterior Faucet (Below Kitchen Window)

Electrical

- 100 Amp Electric Panel
- (1) Exterior GFI Outlet (By Back Door)
- (2) Exterior Lights at Front Door
- (1) Backdoor Exterior Light
- Pro Smart Thermostat
- Plumb for Washer
- Wire for Dryer
- LED Lights Throughout
- Switch-to-Light (All Walk-In Closets)

Kitchen

- Farmhouse Stainless Steel Sink w/ Black Gooseneck Faucet
- Ceramic Behind Range to Ceiling (Multi-Section)
- Ceramic Behind Range to Microwave (Single-Section)
- Lined Cabinets
- 42" Overhead Cabinet w/ Adjustable Shelves
- Center Shelf in Base Cabinet
- Island (Per Plan)

Appliances

(Stainless Steel Only)

- Gas Range
- 18 Cu. Ft. Refrigerator
- Dishwasher
- Microwave in Pantry Cabinet (Over Range in Single-Section)
- Euro-style Range Hood (Not Available in Single-Section)

Bathrooms

- Rectangle Porcelain Sinks
- 34x60" or 48x60" Palisade Shower in Primary Bath (Per Plan - Multi-Section Only)
- 60" 1-Piece Tub/Shower - Hall Bath
- 60" 1-Piece Shower - Primary Bath (Single-Section)
- Elongated Toilets
- Framed Mirrors
- (2) Sinks in Primary Bath (Where Possible)
- Lighted Vent Fans

50
YEARS

CELEBRATING
FIFTY YEARS
OF BUILDING IN
NEW YORK & THE NORTHEAST

Construction

- R-48 Roof Insulation
- 60# Roof Load - 24" O.C. Truss
- 5/12 Roof Pitch
- 2x10 Floor Joists - 16" O.C.
- Thermo-Brace® Exterior Sheathing
- R-24 Wall Insulation
- 8' Flat Ceiling
- Ascend Dormer - Ship Loose
- Tray Ceiling in Living Room
- 2x6 Sidewalls - 16" O.C.
- 19/32 OSB Floor Decking
- 1/2" OSB Roof Decking
- 2x4 Double Marriage Walls
- Basement Entry
- Marriage Line Thermal Gasket
- Ice Guard

Exterior

- 36x80 Craftsman Front Door
- 36x80 9-Light Rear Door
- Architectural Shingles
- Window Lineals at Front Door Side
- Low-E Thermal Pane Windows (Argon)

Interior

- 3-Panel Interior Doors
- Stipple Ceiling
- 2" Blinds Throughout
- Wide Linoleum Transition Piece
- Craftsman Molding Package Throughout
- White Wood Windowsills
- Finished Drywall in All Rooms & Primary Closet with Standard White Wall Primer
- Sheetrock with Batten Corners in Secondary Bedroom Closets
- Linoleum in Living Room, Kitchen, Dining Room, Family Room & Baths
- Take Away Series Carpet All Bedrooms

Interior (Continued)

- White RTF or Wood Cabinet Doors & Stiles
- Laminate Countertops with (1) Row of Ceramic or Glass Backsplash
- Crescent Counter Edging Throughout
- Black Faucets, Doorknobs, Hinges & Cabinet Pulls
- Residential Shelving in Primary Bedroom Closet
- Entertainment Center

Plumbing

- Stub Water & Sewer Lines
- Stub Boots & Registers
- Water Shutoffs Throughout
- (1) Exterior Faucet Under Kitchen Window

Electrical

- 200 Amp Electric Panel
- (2) Exterior GFI Outlets (One at Each Exterior Door)
- (2) Exterior Lights at Front Door
- (1) Backdoor Exterior Light
- Pro Smart® Thermostat
- Plumbing for Washer
- Wire for Dryer
- LED Lights Throughout
- Carbon Monoxide Detectors
- Whole House Ventilation System - Whisper Green Fan in Utility Room

Kitchen

- Farmhouse Stainless Steel Sink with Black Gooseneck Faucet
- Ceramic Behind Range to Ceiling
- Lined Cabinets
- 42" Overhead Cabinet with Adjustable Shelves
- Center Shelf in Base Cabinet
- Kitchen Island (Per Plan)

Appliances

(Stainless Steel Only)

- Gas Range
- 18 Cu. Ft. Refrigerator
- Dishwasher
- Microwave in Pantry Cabinet
- Euro-style Range Hood

Bathrooms

- Rectangle Porcelain Sinks
- 34"x60" Palisade® Shower in Primary Bath
- 60" 1-Piece Tub-Shower in Hall Bath
- Elongated Toilets
- Framed Bath Mirrors

CHAMPION®
HOME BUILDERS

PROUDLY BUILT IN
SANGERFIELD, NEW YORK

Due to continuous product development and improvement, prices, specifications, and materials are subject to change without notice or obligation. Square footage and other dimensions are approximate. Exterior images may be artist renderings and are not intended to be an accurate representation of the home. Renderings, photos and floor plans may be shown with optional features or third-party additions.

50 **YEARS** | **CELEBRATING**
FIFTY YEARS
OF BUILDING IN
NEW YORK & THE NORTHEAST



TITANHOMESNY.COM

CHAMPION®
HOME BUILDERS

951 Route 12 South
Sangerfield, NY 13455
(315) 841-4122