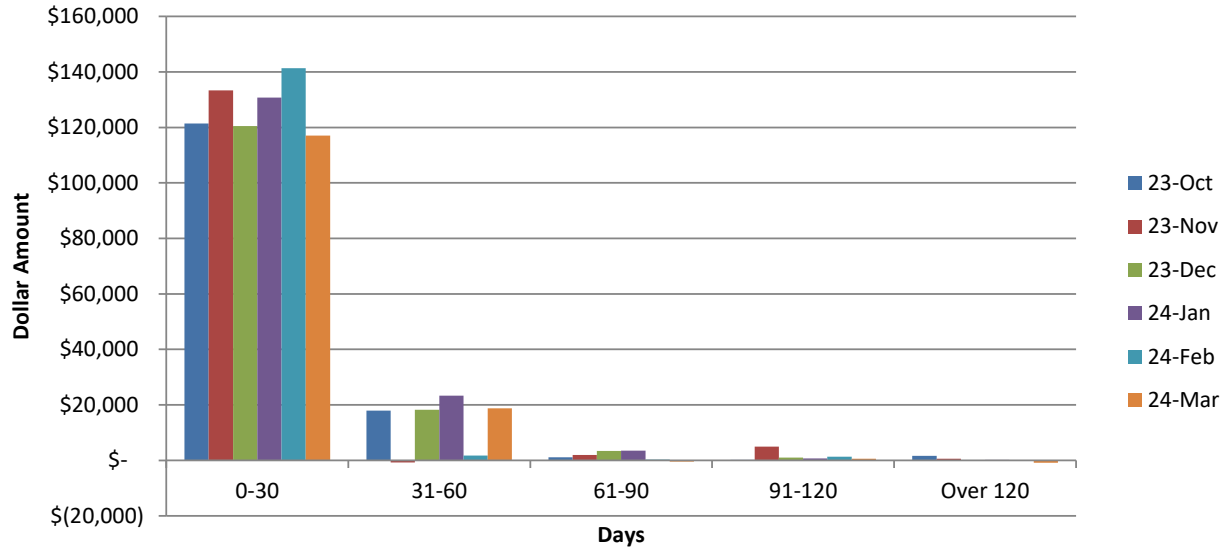


WPCA AGED A/R TRENDS OCTOBER 2023 - MARCH 2024



OCT	OCT	OCT	OCT	OCT	
0-30	31-60	61-90	91-120	OVER 120	
\$ 121,368	\$ 17,885	\$ 1,135	\$ 163	\$ 1,673	\$ 142,225

NOV	NOV	NOV	NOV	NOV	
0-30	31-60	61-90	91-120	OVER 120	
\$ 133,322	\$ (795)	\$ 1,998	\$ 4,983	\$ 572	\$ 140,080

DEC	DEC	DEC	DEC	DEC	
0-30	31-60	61-90	91-120	OVER 120	
\$ 120,496	\$ 18,201	\$ 3,446	\$ 963	\$ 95	\$ 143,200

JAN	JAN	JAN	JAN	JAN	
0-30	31-60	61-90	91-120	OVER 120	
\$ 130,771	\$ 23,335	\$ 3,531	\$ 741	\$ 163	\$ 158,541

FEB	FEB	FEB	FEB	FEB	
0-30	31-60	61-90	91-120	OVER 120	
\$ 141,301	\$ 1,771	\$ 251	\$ 1,311	\$ (53)	\$ 144,581

MAR	MAR	MAR	MAR	MAR	
0-30	31-60	61-90	91-120	OVER 120	
\$ 117,081	\$ 18,806	\$ (451)	\$ 575	\$ (853)	\$ 135,158

Foot Notes:

Cash Collected in the month of March 2024: \$143,397.05